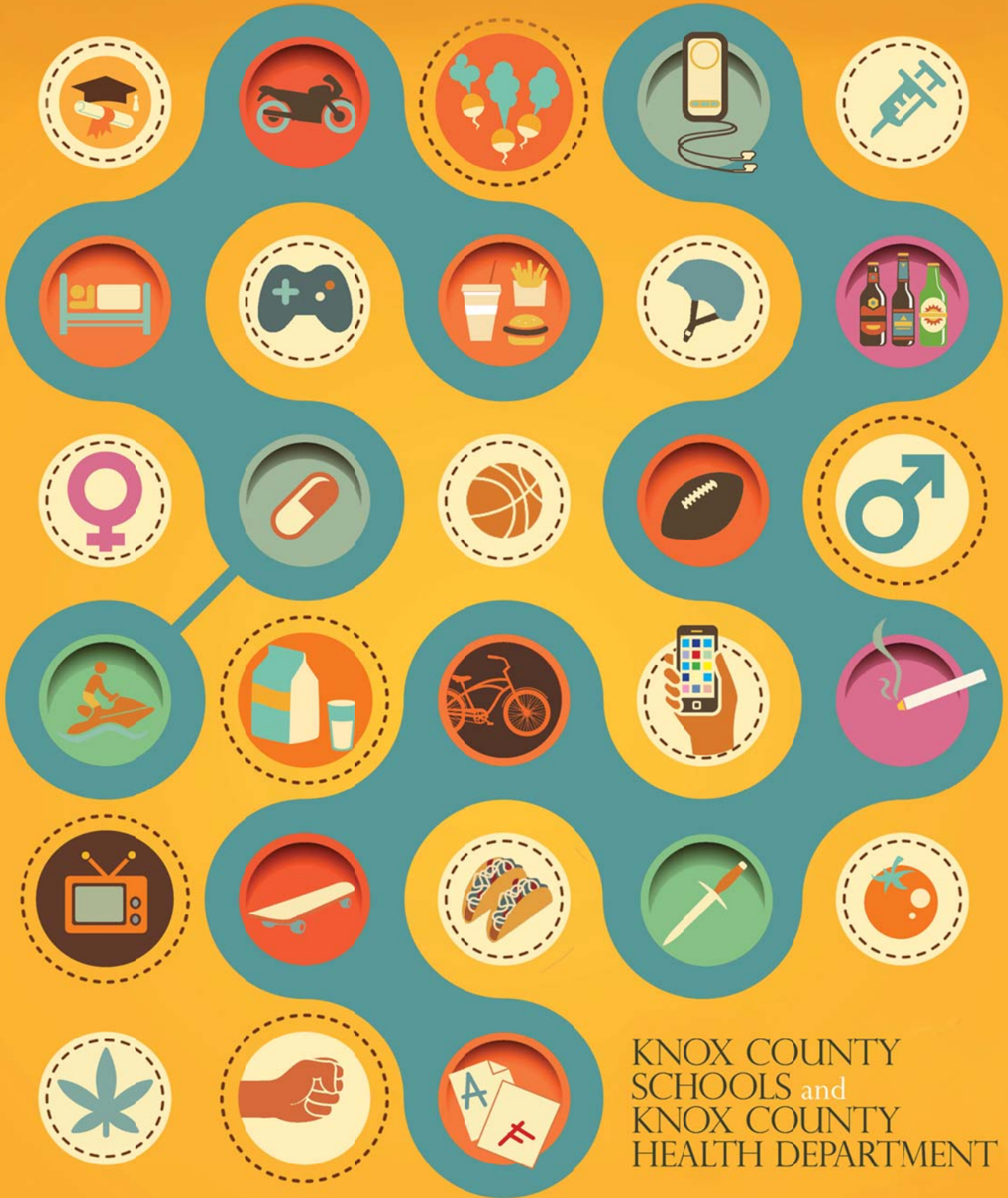


2013 KNOX COUNTY SCHOOLS MIDDLE SCHOOL YOUTH RISK BEHAVIOR SURVEY



KNOX COUNTY
SCHOOLS and
KNOX COUNTY
HEALTH DEPARTMENT

ACKNOWLEDGEMENTS

The 2013 Knox County Schools Middle School Youth Risk Behavior Survey (MS-YRBS) was made possible through the efforts of Knox County Health Department, Knox County Schools, the Metropolitan Drug Commission, the Mental Health Association of East Tennessee, and the East Tennessee Children's Hospital. The 2013 Knox County Schools MS-YRBS would also not have been possible without the support of Knox County Government, including the Mayor, County Commission, and the Knox County Board of Health. We are especially grateful for the cooperation of all the Knox County Schools middle schools, including their principals, teachers, and students who participated in the sample.

The following individuals deserve special recognition for their help and guidance:

Knox County Schools:

Aneisa McDonald
John Beckett
T. Nakia Towns

Metropolitan Drug Commission:

Karen Pershing
Sarah Harder
Heather Sutton

Mental Health Association of East Tennessee:

Ben Harrington
Deborah Chapman

East Tennessee Children's Hospital:

Pat Kelly

Knox County Health Department:

Dr. Martha Buchanan, Director
Mark Miller, Deputy Director

Kathleen Brown
Connie Cronley
Kimberly Diehl
Terri Geiser
Cynthia Hudson
Al Iannacone
Katie Larsen
Alicia Mastronardi
J. Mark Prather
Dan Proctor
Amy Rowling
Sabrina Smith (intern)
Roberta Sturm

This report may be requested at the following address: epi.info@knoxcounty.org

For more information or data requests regarding the 2013 Knox County Schools Middle School Youth Risk Behavior Survey, please contact:

Knox County Health Department
Epidemiology Program
140 Dameron Avenue
Knoxville, Tennessee 37917
Phone: 865-215-5095
Email: epi.info@knoxcounty.org

Table of Contents

ACKNOWLEDGEMENTS	i
PURPOSE	iii
METHODOLOGY	iii
KEY RESULTS.....	v
IMPLICATION FOR THE COMMUNITY	xi
TABLE OF TABLES AND FIGURES	xii
Section 1: Behaviors that contribute to unintentional injuries	1
Section 2: Behaviors that contribute to self-harm and violence	6
Section 3: Tobacco use.....	17
Section 4: Alcohol and other drug use.....	25
Section 5: Weight control and diet	33
Section 6: Physical activity	44
Section 7: Additional health-related topics	52

PURPOSE

The 2013 Knox County Schools Middle School Youth Risk Behavior Survey (MS-YRBS) provides data on health-risk behaviors among Knox County Schools (KCS) 6th-8th grade students that contribute to the leading causes of death, disability, chronic medical problems and social problems among youth. The Middle School Youth Risk Behavior Survey is also distributed at the state level. Primarily the MS-YRBS is a way to assess individual behaviors among middle school students especially behaviors which can contribute to premature death, injuries, violence, substance use, physical inactivity and mental health issues. The data from this report are used to inform area government agencies, non-profits and councils as they make policy decisions and search for grant funding to improve the quality of life and health for adolescents in Knox County, Tennessee. The data are also used to capture trends over time to inform public policy discussions. The Knox County Schools Middle School Youth Risk Behavior Survey was conducted in 2008, 2010, and is being presented for 2013.

METHODOLOGY

Conducted from May 1 to May 8, 2013, the Knox County Schools Middle School Youth Risk Behavior Survey gathered information on health-related behaviors, especially risk behaviors among Knox County Schools middle schools students. The Knox County Schools Youth Risk Behavior Survey was conducted jointly with the Tennessee MS-YRBS. As previously mentioned, previous Knox County Schools Middle School Youth Risk Behavior Surveys were conducted in 2008 and 2010.

Questions from the 2013 Knox County Schools Middle School Youth Risk Behavior Survey were selected by the Tennessee Department of Education (TDOE) with guidance from the Centers for Disease Control and Prevention (CDC) (http://www.cdc.gov/healthyyouth/yrbs/questionnaire_rationale.htm). No questions were added to the survey at the local level.

The sample was designed by Knox County Schools and included from five to eight randomly-selected 2nd period classes from each of the fourteen Knox County Schools middle schools. The sample yielded 72 classes with 1,656 potential survey respondents. Students could opt out of the survey by returning a passive-consent form signed by a parent or guardian or opt out on their own. The surveys were administered by KCS classroom teachers after receiving just-in-time training on MS-YRBS protocols. Data were weighted based on 2012-2013 enrollment

figures for gender, race/ethnicity (white non-Hispanic, black non-Hispanic, and other race/ethnicities including Hispanic of any race), and school grades (6th to 8th). The data were analyzed using CDC methodology when applicable. Confidence intervals were generated to allow for between-group comparisons (such as between males and female) or comparisons between estimates from previous years.¹

To ensure reliability, analysis results with less than 20 responses were marked with an asterisk (*) in the tables and not reported. In addition, Coefficient of Variation (CV) estimates were made on the responses and CV estimates of 25.0 or higher also resulted in the analysis results being removed from the final tables and also marked with an asterisk.² Results with CV estimates of 20.0 to 24.99 were reported in the tables but marked with a double asterisk (**) to warn the reader that the estimate has limited reliability and should be interpreted with extreme caution. Standard errors and CV estimates do not appear in the tables due to space limitations but are available by request.

Sample Characteristics

Of the 72 2nd period classes in the sample, 71 classes participated with one class having to opt out due to a scheduling conflict and 238 students either absent or not responding. Out of the 1,656 students in the sample pool, 1,418 responded resulting in a response rate of 85.6%. The demographic profile of the sample is as follows:

Total	1,418	
Males	698 (49.3%)	
Females	717 (50.7%)	
<i>Missing</i>	3	
6th grade	420 (29.9%)	
7th grade	441 (31.4%)	
8th grade	545 (38.7%)	
<i>Missing</i>	12	
White (non-Hispanic)		972 (69.4%)
Black (non-Hispanic)		196 (14.0%)
Other race/ethnicity (including Hispanic of any race)		232 (16.6%)
<i>Missing</i>		18

¹ Motulsky, H. (1995). *Intuitive biostatistics*. Oxford University Press. New York.

² Korn, E. & Graubard, B. (1999). *Analysis of health surveys*. John Wiley and Sons, Inc., New York.

KEY RESULTS

The following are some highlights from the findings of the 2013 Knox County Schools Middle School Youth Risk Behavior Survey (MS-YRBS). When possible, the results are compared to the U.S. Department of Health and Human Services *Healthy People 2020* objectives which establish science-based objectives to be met by communities by the year 2020 (see HealthyPeople.gov). Unless otherwise noted, there was little to no change in prevalence from previous Knox County Schools MS-YRBS years.

Section 1: Behaviors that contribute to unintentional injuries

Helmet use

Almost two-thirds (64.1%) of Knox County Schools (KCS) middle school students who ride bicycles reported they rarely or never wear a helmet when they ride bikes ([Table 1](#)). More than two-thirds (72.1%) of KCS middle school students who roller blade or skate reported they rarely or never wear helmets when they roller blade/skate ([Table 2](#)).

Motor vehicle safety

Five percent (5.1%) of KCS middle school students reported they rarely or never wear seatbelts when riding in a car ([Table 3](#)). This meets *Healthy People 2020* objective IVP-15 which calls for at least eight percent of right, front seat passengers (of any age) wearing a seatbelt ([Figure 3](#)).

One out of six (18.0%) KCS middle school students reported they had been a passenger in a car driven by someone who had been drinking alcohol during their lifetime ([Table 4](#)). At eighteen percent in 2013, this has reduced from the results for this variable in 2008 (25.4%) and 2010 (25.8%) ([Figure 4](#)).

Section 2: Behaviors that contribute to self-harm and violence

School safety and bullying

Almost fourteen percent (13.9%) of KCS middle school students reported they rarely or never feel safe and secure at school ([Table 6](#)).

Almost one-half (48.3%) of KCS middle school students reported they had been bullied on school property ([Table 9](#)). Females (52.3%) were more likely to report being bullied in school than males (43.7%). Black students (34.3%) were less likely to report this variable compared to white students (51.5%).

Almost one out of four (23.4%) KCS middle school students reported they had ever been bullied electronically, including emails, chat rooms, instant messages, or texting ([Table 10](#)). Females (29.4%) were more likely to report this variable compared to males (16.2%). White students (25.4%) were more likely to report being bullied electronically compared to Black students (14.2%).

More than one-half (55.7%) of KCS middle school students either agreed or strongly agreed with a statement that harassment and bullying is a problem at their school ([Table 11](#)).

Intentional self-harm

Almost seven percent (6.8%) of Knox County Schools middle school students reported they had ever tried to kill themselves ([Table 14](#)). Females (8.9%) reported this behavior more frequently than males (4.3%). Other race/ethnicity students (14.2%), including Hispanic students of any race, were more likely to report this behavior compared to white students (5.1%).

Section 3: Tobacco use

Cigarettes

Almost five percent (4.5%) of KCS middle school students reported they smoked a whole cigarette before they were 11 years of age ([Table 16](#)). Six percent (6.0%) of KCS middle school students reported they smoked cigarettes on one or more days in the past 30 days in 2013 ([Table 17](#)). Almost four percent of KCS middle school students (3.6%) reported they had ever smoked every day for thirty days in a row ([Table 18](#)).

Other form of tobacco

More than four percent (4.3%) of KCS middle school students reported using chewing tobacco, snuff, or dip in the past 30 days ([Table 19](#)) and almost six percent (5.9%) reported smoking cigars, cigarillos, or little cigars in the past days ([Table 20](#)).

Overall, slightly more than ten percent (10.4%) of KCS middle school students reported using any form of tobacco products (cigarettes, chewing tobacco, snuff, dip, cigars, cigarillos, little cigars) during the past 30 days ([Table 21](#)). At sixteen percent (16.0%), students in the eighth grade were more likely to report this behavior than students in the sixth (7.5%) or seventh grade (7.9%).

Section 4: Alcohol and other drug use

Alcohol

One out of five (20.5%) KCS middle school students reported they had ever tried drinking alcohol (excluding a few sips or for religious purposes); this was lower than the 2010 estimate for this behavior (26.9%)-see [Table 22](#) and [Figure 22](#). Nine percent (9.3%) of KCS middle school students reported they tried their first drink of alcohol (other than a few sips) before they were 11 years of age ([Table 23](#)).

Other drugs

One out of ten (10.0%) KCS middle school students reported they had ever used marijuana ([Table 24](#)). White students (8.0%) were less likely to report this behavior compared to Black students (16.7%) or other race/ethnicity students (15.1%).

Almost seven percent (6.7%) of KCS middle school students had ever used inhalants to get high ([Table 27](#)). Almost five percent of KCS middle school students (4.6%) reported they had ever taken prescription drugs (such as Oxycontin, Percocet, Vicodin, codeine, Adderall, Ritalin, or Xanax) without a doctor's prescription ([Table 28](#)).

Section 5: Weight control and diet

Overweight

Almost one out of four (24.0%) Knox County Schools middle school students described their weight to be slightly overweight or overweight ([Table 29](#)). Almost one-half (45.3%) of KCS middle school students reported they are trying to lose weight. At 56.8%, females were more likely to report this behavior compared to males (32.0%) ([Table 30](#)).

Rapid weight loss/weight control methods

Some KCS middle school students (16.9%) reported they had ever fasted to lose weight or maintain weight ([Table 31](#)). Other race/ethnicity students (24.7%) were more likely to report this behavior compared to white students (15.4%). Students who earned mainly D's and F's in school (27.6%) were more likely to report having ever fasted compared to students earning A's (12.7%) or B's (14.8%).

Approximately three percent (3.4%) of KCS middle school students reported they had used diet pills, powders, or liquids to lose weight or help them maintain their weight ([Table 32](#)). Five

percent (5.2%) of KCS students have ever vomited or used laxatives to lose weight or help control their weight ([Table 33](#)).

Dietary patterns

Almost one-half of KCS middle school students (49.7%) reported they ate breakfast seven times during week before the survey ([Table 37](#)). Students who primarily earn A's (56.2%) or B's (50.4%) in their school work were more likely to report eating breakfast seven-times in the past week compared to students who earn primarily D's or F's (34.8%).

Almost four percent of KCS middle school students (3.8%) reported they were hungry either 'most of the time' or 'always' due to a lack of food in their home during the past 30 days ([Table 38](#)).

Section 6: Physical Activity

Level of exercise

One out of ten (10.1%) KCS middle school students reported they did not participate in any physical activity (that increased heart rate and respiratory rate) that lasted at least sixty minutes per day ([Table 39](#)). Other race/ethnicity students (15.8%) reported this lack of physical activity more than white students (9.3%). Students earning primarily D's and F's in their schoolwork were more likely to report his variable compared to students who earn primarily A's (8.8%).

Thirty percent (30.0%) of KCS middle school students reported they participated in a physical activity for at least sixty minutes every day during the seven days during the survey ([Table 40](#)). At 37.5%, males were more likely to report this level of physical activity compared to females (23.7%). At thirty percent, KCS middle school students met and exceeded Healthy People 2020 objective PA-3 which calls for 20.2% of adolescents exercising for sixty minutes per day ([Figure 40](#)).

Television and use of computers for nonacademic reasons

One out of three (33.5%) Knox County Schools middle school students reported they watch three or more hours of television on an average school day ([Table 41](#)). Black students (53.7%) reported they watch 3 or more hours of TV on average school days more than white students (28.9%) or other race/ethnicity students (32.8%).

Almost forty percent (39.1%) of KCS middle school students reported they play video or computer games or use computers for something other than school work for three or more hours in an average school day ([Table 42](#)). KCS middle school sixth graders (31.9%) were less likely to report this behavior compared to seventh graders (42.1%) or eighth graders (43.6%). Students whose schoolwork consists primarily of A's (32.6%) were less likely to report this behavior compared to students who primarily earn C's (47.1%) or D's or F's (46.3%).

PE classes and team sports

Almost one out of three (32.9%) KCS middle school students reported they attended a PE class on five days in an average school week ([Table 43](#)). Almost three out of five (58.3%) KCS middle school students reported they played on one or more sports teams in the past 12 months ([Table 45](#)). Students earning primarily D's or F's (47.0%) reported this behavior less frequently than students earning primarily A's (66.7%).

Section 7: Additional health-related topics

Asthma

Approximately one out of eight (13.9%) Knox County Schools middle school students reported they currently have asthma ([Table 47](#)). Black students (20.4%) reported having this condition more than white students (12.0%).

Sleep

More than one-half (57.3%) of KCS middle school students reported they get eight or more hours of sleep on average school nights ([Table 49](#)). Students who primarily earn A's (65.5%) in their schoolwork are more likely to report getting eight or more hours on school nights compared to students earning C's (49.9%) or D's and F's (40.1%).

STD and HIV education

Almost three out of four (74.1%) KCS middle school students reported they had been taught about sexually transmitted diseases (STDs) in school ([Table 50](#)). Males (78.4%) were more likely to report they had been taught about STDs in school compared to females (70.4%). The results show a clear trend with more students being taught as they advance in grade-level with 86.3% of eighth-graders reporting they had been taught compared to 73.8% of seventh-graders and 62.4% of sixth-graders.

Over seventy percent (71.3%) of KCS middle school students reported they had been taught about AIDS or HIV infection in school ([Table 51](#)). Males (76.1%) were more likely to report this behavior compared to females (67.4%). Similar to STD education, the results also show a clear trend with more students reporting they had been taught about HIV/AIDS in the eighth grade (84.1%) compared to the seventh grade (72.8%) and the sixth grade (57.5%).

Guidance from adults

Seven out of ten (70.7%) students reported they know a teacher or adult in the school they can talk to, should they have a problem ([Table 52](#)). Students who primarily earn D's or F's in school (56.3%) were less likely to report they knew an adult to talk with compared to students who primarily earn A's (75.1%).

Approximately twenty percent (19.5%) of students reported they talked to a guidance counselor in their school about personal problems in the 12 months prior to the survey ([Table 53](#)).

Females (24.6%) were more likely to report this behavior compared to males (13.4%). Students earning D's or F's (32.6%) were more likely to report discussing problems with their guidance counselor compared to students who earn A's (12.5%) or B's (17.7%).

IMPLICATION FOR THE COMMUNITY

Behaviors adopted during the middle school years, an intense time of development and attitude formation, can affect the quality of life of that adolescent for the rest of their lives. Tobacco and alcohol use, inadequate exercise, poor dietary habits, substance abuse, poor injury prevention practices are just a few of the behaviors often initiated in the middle school years. Therefore, it is vital to monitor these behaviors and allocate prevention and education resources as best one can to reduce poor choices regarding exercise, diet, risk-taking, substance use, sleep patterns, and other health-related behaviors. The 2013 Knox County Schools Middle School Youth Risk Behavior Survey is a good example of how to monitor these behaviors and provides valuable data for school stakeholders interested in applying for funding to develop programs for such problems as:

- Underage drinking
- Obesity
- Poor seatbelt use
- Lack of school-based asthma treatment facilities
- Prescription drug misuse
- Lack of daily physical exercise
- Lack of HIV/STD programming
- Lack of adequate food

TABLE OF TABLES AND FIGURES

Table 1. Among Knox County Schools middle school students who ride bicycles, the percentage who reported they ‘rarely’ or ‘never’ wear a bicycle helmet when they ride, 2013 2

Table 2. Among Knox County Schools middle school students who rollerblade or roller skate, the percentage who reported they ‘rarely’ or ‘never’ wear a helmet when they skate, 2013..... 3

Table 3. Percentage of Knox County Schools middle school students who reported they ‘rarely’ or ‘never’ wear a seatbelt when riding in a car, 2013 4

Table 4. Percentage of Knox County Schools middle school students that reported they had ever been driven in a car by someone that had been drinking alcohol, 2013..... 5

Table 5. Percentage of Knox County Schools middle school students who reported they had ever carried a weapon (gun, knife, club), 2013 7

Table 6. Percentage of Knox County Schools middle school students who reported they ‘rarely’ or ‘never’ feel safe and secure at school, 2013 8

Table 7. Percentage of Knox County Schools middle school students who reported they had ever been in a physical fight, 2013..... 9

Table 8. Percentage of Knox County Schools middle school students who reported they had ever been injured in a fight badly enough to require treatment from a doctor or nurse, 2013 10

Table 9. Percentage of Knox County Schools middle school students who reported they had ever been bullied on school property, 2013 11

Table 10. Percentage of Knox County Schools middle school students who reported they had ever been bullied electronically (email, chat rooms, instant messages, websites, or texts), 2013..... 12

Table 11. Percentage of Knox County Schools middle school students who reported they ‘agree’ or ‘strongly agree’ that harassment and bullying by students is a problem at their school, 2013..... 13

Table 12. Percentage of Knox County Schools middle school students who reported they had ever seriously thought about committing suicide, 2013 14

Table 13. Percentage of Knox County Schools middle school students who reported they had ever made a plan to commit suicide, 2013 15

Table 14. Percentage of Knox County Schools middle school students who reported they had ever attempted suicide, 2013 16

Table 15. Percentage of Knox County Schools middle school students who reported they had ever tried smoking cigarettes, even one or two puffs, 2013..... 18

Table 16. Percentage of Knox County Schools middle school students who reported they smoked their first cigarettes before age 11 years, 2013..... 19

Table 17. Percentage of Knox County Schools middle school students who reported they smoked cigarettes one or more days in the past 30 days, 2013 20

Table 18. Percentage of Knox County Schools middle school students who reported they had ever smoked cigarettes every day for 30 days in a row, 2013..... 21

Table 19. Percentage of Knox County Schools middle school students who used chewing tobacco, snuff, or dip, in the past 30 days, 2013 22

Table 20. Percentage of Knox County Schools middle school students who reported they smoked cigars, cigarillos, or little cigars on one or more days during the past 30 days, 2013..... 23

Table 21. Percentage of Knox County Schools middle school students who used tobacco in any form, including cigarettes, cigars, or smokeless tobacco products, on one or more days during the past 30 days, 2013 24

Table 22. Percentage of Knox County Schools middle school students who reported they had ever tried drinking alcohol (other than a few sips or for religious purposes), 2013 26

Table 23. Percentage of Knox County Schools middle school students who reported they tried alcohol other than a few sips before 11 years of age, 2013..... 27

Knox County Schools Middle School Youth Risk Behavior Survey, 2013

Table 24. Percentage of Knox County Schools middle school students who reported they had ever used marijuana, 2013	28
Table 25. Percentage of Knox County Schools middle school students who reported they had tried marijuana before they were 11 years of age, 2013	29
Table 26. Percentage of Knox County Schools middle school students who reported they had ever tried cocaine, 2013	30
Table 27. Percentage of Knox County Schools middle school students who reported they had ever used inhalants (spray cans, paints, or sprays) to get high, 2013	31
Table 28. Percentage of Knox County Schools middle school students who reported they had ever taken prescription drugs (such as Oxycontin, Percocet, Vicodin, codeine, Adderall, Ritalin, or Xanax) without a doctor’s prescription, 2013.....	32
Table 29. Percentage of Knox County Schools middle school students who describe their weight to be slightly overweight or overweight, 2013	34
Table 30. Percentage of Knox County Schools middle school students who reported they were trying to lose weight, 2013	35
Table 31. Percentage of Knox County Schools middle school students who reported they went without eating for 24 hours or more (fasted) to lose weight or keep from gaining weight, 2013	36
Table 32. Percentage of Knox County Schools middle school students who reported they had ever taken diet pills, powders, or liquids without a physician’s advice (excluding meal replacements) to lose weight or to keep from gaining weight, 2013.....	37
Table 33. Percentage of Knox County Schools middle school students who reported they had ever vomited or taken laxatives to lose weight or keep from gaining weight in their lifetime, 2013.....	38
Table 34. Percentage of Knox County Schools middle school students who reported their doctor or nurse discussed weight control with them at their last checkup, 2013	39
Table 35. The number of days Knox County Middle School Students ate breakfast during the seven days before the survey by percentage, 2013	40
Table 36. Percentage of Knox County Schools middle school students who reported they ate breakfast five or more times during the past seven days, 2013	41
Table 37. Percentage of Knox County Schools middle school students who reported they ate breakfast seven times during the past seven days, 2013	42
Table 38. Percentage of Knox County Schools middle school students who reported they went hungry ‘most of the time’, or ‘always’, due to a lack of food in their house during the past 30 days, 2013	43
Table 39. Percentage of Knox County Schools middle schools students who reported they did not participate in a physical activity of at least sixty minutes during the past seven days, 2013.....	45
Table 40. Percentage of Knox County Schools middle school students who reported they participated in a physical activity for least sixty minutes every day during the past seven days, 2013	46
Table 41. Percentage of Knox County Schools middle school students who reported they watch three or more hours of television on an average school day, 2013	47
Table 42. Percentage of Knox County Schools middle school students who reported they play video or computer games or use a computer for something other than school work for three or more hours on an average school day, 2013—Includes time spent with Xbox, Playstation, an Ipod, an Ipad or other tablet, Smartphones, Youtube, Facebook or other social networking tools, and the Internet.	48
Table 43. Percentage of Knox County Schools middle school students who reported they attended a PE class every day (5 days) in an average school week, 2013	49
Table 44. Percentage of Knox County Schools middle school students who reported they attended PE class on one or more days during the past week, 2013.....	50

Knox County Schools Middle School Youth Risk Behavior Survey, 2013

Table 45. Percentage of Knox County Schools middle school students who reported they played on one or more sports teams during the past 12 months, 2013	51
Table 46. Percentage of Knox County Schools middle school students who reported they had ever been told by a doctor or a nurse they have asthma, 2013	53
Table 47. Percentage of Knox County Schools middle school students who reported they currently have asthma, 2013.....	54
Table 48. Percentage of Knox County Schools middle school students who reported they 'rarely' or 'never' wash their hands before they eat, 2013	55
Table 49. Percentage of Knox County Schools middle school students who reported they sleep eight or more hours on average school nights, 2013	56
Table 50. Percentage of Knox County Schools middle school students who reported they had ever been taught about sexually transmitted diseases (STDs) in school, 2013	57
Table 51. Percentage of Knox County Schools middle school students who reported they had ever been taught about AIDS or HIV infection in school, 2013.....	58
Table 52. Percentage of Knox County Schools middle school students who reported they know a teacher or adult in the school they can talk to, if they have a problem, 2013	59
Table 53. Percentage of Knox County Schools middle school students who reported they talked to a guidance counselor in their school about a personal problem during the past 12 months, 2013...	60

Section 1:
Behaviors that contribute to unintentional injuries

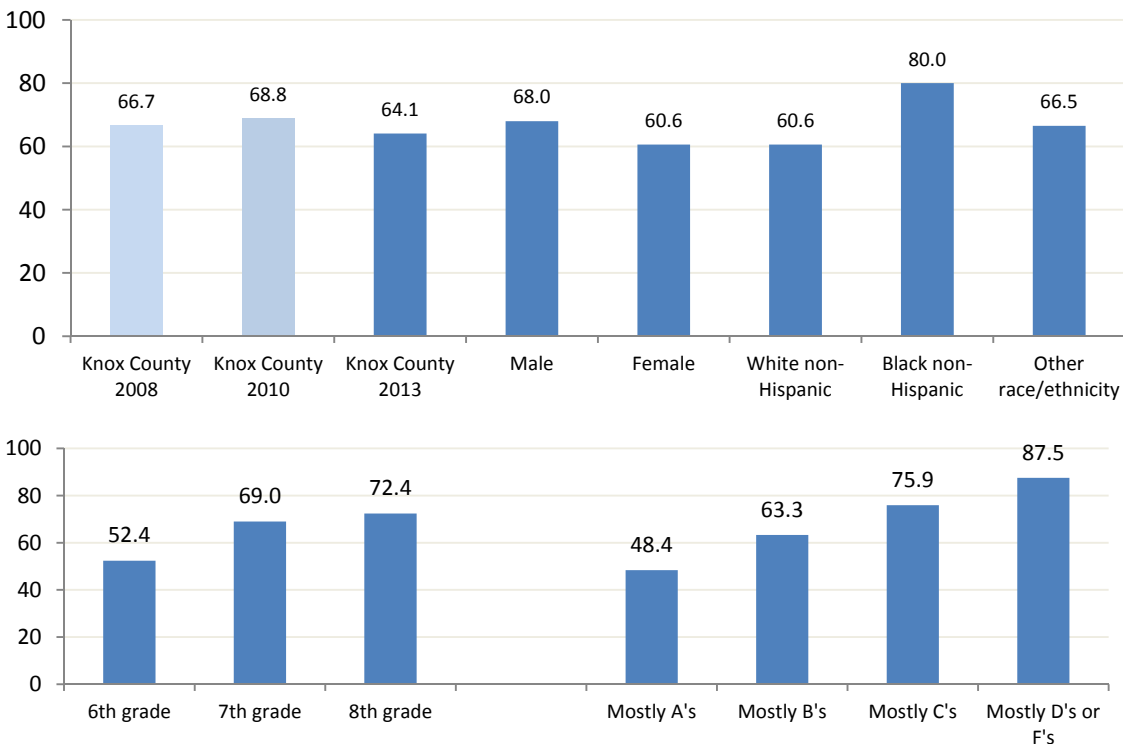
Knox County Schools Middle School Youth Risk Behavior Survey, 2013

Table 1. Among Knox County Schools middle school students who ride bicycles, the percentage who reported they 'rarely' or 'never' wear a bicycle helmet when they ride, 2013

Total $n = 1,084$

	Sample n	Weighted n	Percentage	CI
Total	707	6,573	64.1	(61.1-67.0)
Male	373	3,295	68.0	(63.9-71.8)
Female	334	3,278	60.6	(56.1-64.9)
Race/Ethnicity				
White non-Hispanic	480	4,782	60.6	(57.1-64.0)
Black non-Hispanic	113	1,294	80.0	(72.2-86.0)
Other race/ethnicity	114	497	66.5	(59.2-73.2)
Grade in school				
6th	188	1,930	52.4	(46.8-57.8)
7th	233	2,360	69.0	(63.9-73.7)
8th	286	2,292	72.4	(67.8-76.7)
Estimated grades in past year				
Mostly A's	162	1,514	48.4	(42.8-54.0)
Mostly B's	228	2,151	63.3	(57.9-68.4)
Mostly C's	155	1,422	75.9	(69.1-81.6)
Mostly D's or F's	82	738	87.5	(78.9-92.9)

Figure 1. Among Knox County Schools middle school students who ride bicycles, the percentage who reported they 'rarely' or 'never' wear a bicycle helmet when they ride, 2008, 2010, 2013; by gender, race/ethnicity, grade, and estimated school grades in the past year, 2013



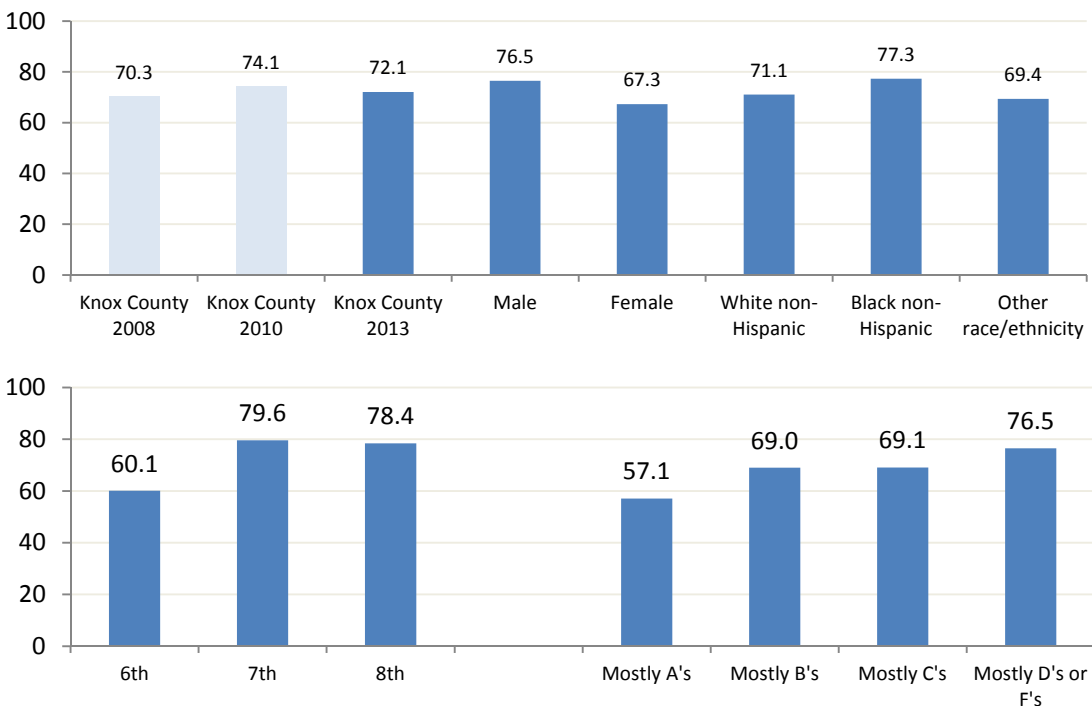
Knox County Schools Middle School Youth Risk Behavior Survey, 2013

Table 2. Among Knox County Schools middle school students who rollerblade or roller skate, the percentage who reported they 'rarely' or 'never' wear a helmet when they skate, 2013

Total *n* = 550

	Sample n	Weighted n	Percentage	CI
Total	401	3,662	72.1	(67.9-75.9)
Male	229	2,004	76.5	(71.3-81.1)
Female	172	1,658	67.3	(60.7-73.3)
Race/Ethnicity				
White non-Hispanic	269	2,654	71.1	(66.1-75.6)
Black non-Hispanic	61	699	77.3	(66.2-85.5)
Other race/ethnicity	71	309	69.4	(59.7-77.6)
Grade in school				
6th	111	1,115	60.1	(52.3-67.4)
7th	124	1,215	79.6	(72.5-84.2)
8th	166	1,332	78.4	(72.1-83.5)
Estimated grades in past year				
Mostly A's	80	722	57.1	(48.0-65.6)
Mostly B's	114	1,090	69.0	(61.1-75.8)
Mostly C's	93	800	69.1	(69.1-85.4)
Mostly D's or F's	56	518	76.5	(76.5-93.4)

Figure 2. Among Knox County Schools middle school students who rollerblade or roller skate, the percentage who reported they 'rarely' or 'never' wear a helmet when they skate, 2008, 2010, 2013; by gender, race/ethnicity, grade, and estimated school grades in the past year, 2013



Knox County Schools Middle School Youth Risk Behavior Survey, 2013

Table 3. Percentage of Knox County Schools middle school students who reported they 'rarely' or 'never' wear a seatbelt when riding in a car, 2013

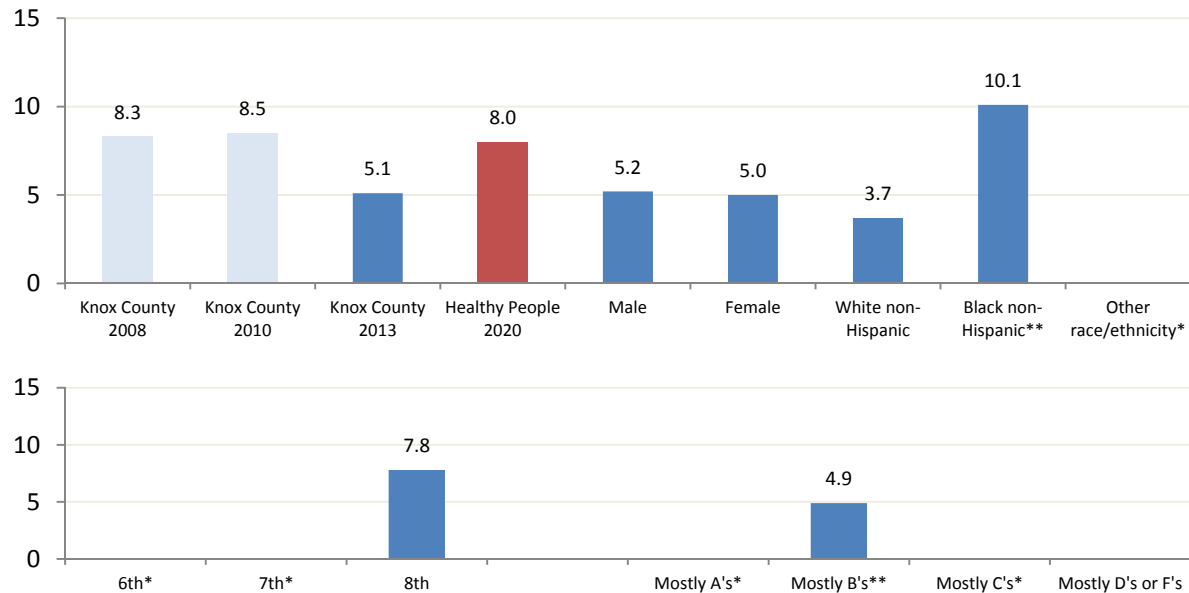
Total *n* = 1,372

	Sample n	Weighted n	Percentage	CI
Total	76	662	5.1	(4.1-6.5)
Male	38	309	5.2	(3.8-7.2)
Female	38	353	5.0	(3.6-7.0)
Race/Ethnicity				
White non-Hispanic	38	359	3.7	(2.7-5.1)
Black non-Hispanic	20	225	10.1**	(6.5-15.3)**
Other race/ethnicity	18	79	*	*
Grade in school				
6th	15	169	*	*
7th	18	159	*	*
8th	43	334	7.8	(5.8-10.5)
Estimated grades in past year				
Mostly A's	12	104	*	*
Mostly B's	23	207	4.9**	(3.2-7.5)**
Mostly C's	15	125	*	*
Mostly D's or F's	18	159	*	*

*Too unreliable to report.

**Limited reliability-interpret with extreme caution

Figure 3. Percentage of Knox County Schools middle school students who reported they 'rarely' or 'never' wear a seatbelt when riding in a car, 2008, 2010, 2013; by *Healthy People 2020* objective, gender, race/ethnicity, grade, and estimated school grades in the past year, 2013



*Too unreliable to report.

**Limited reliability-interpret with extreme caution

NOTE: *Healthy People 2020 IVP-15: 8% of right-front seat passengers (any age) using seatbelts has been met in 2013 by Knox County Schools middle school students.*

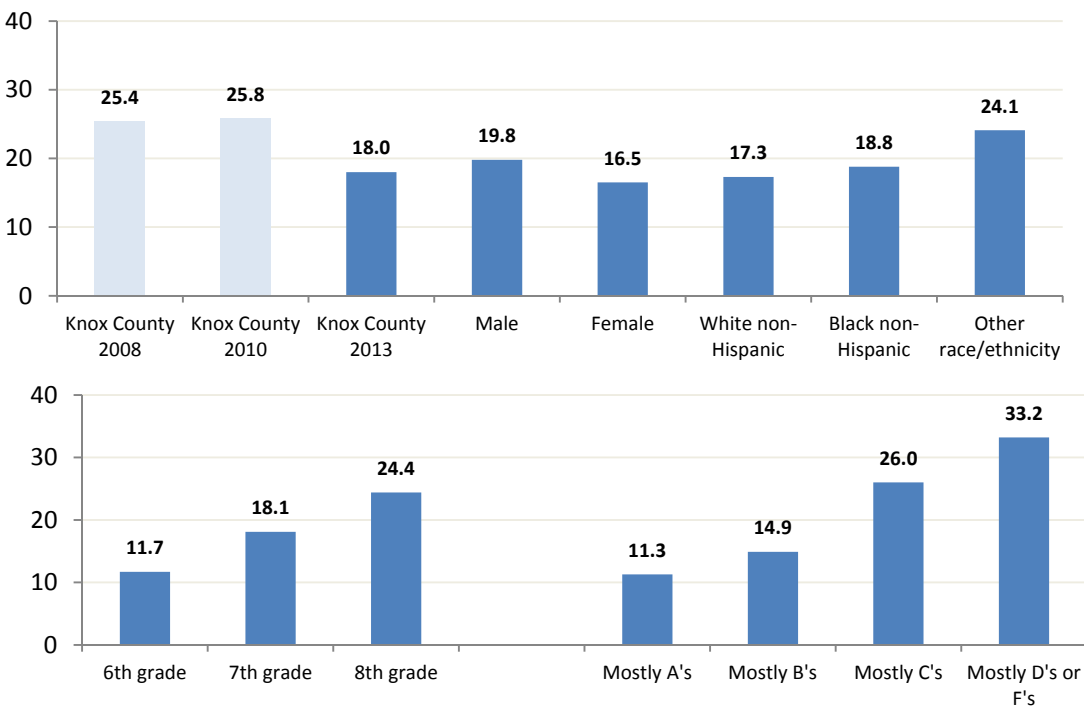
Knox County Schools Middle School Youth Risk Behavior Survey, 2013

Table 4. Percentage of Knox County Schools middle school students that reported they had ever been driven in a car by someone that had been drinking alcohol, 2013

Total $n = 1,361$

	Sample n	Weighted n	Percentage	CI
Total	264	2,304	18.0	(16.0-20.2)
Male	139	1,158	19.8	(16.9-23.1)
Female	125	1,146	16.5	(13.9-19.6)
Race/Ethnicity				
White non-Hispanic	173	1,657	17.3	(15.0-19.8)
Black non-Hispanic	37	412	18.8	(13.7-25.1)
Other race/ethnicity	54	235	24.1	(18.9-30.2)
Grade in school				
6th grade	50	502	11.7	(8.8-15.4)
7th grade	81	772	18.1	(14.7-22.1)
8th grade	133	1,030	24.4	(20.9-28.3)
Estimated grades in past year				
Mostly A's	47	435	11.3	(8.5-14.9)
Mostly B's	74	625	14.9	(11.9-18.6)
Mostly C's	70	618	26.0	(20.8-31.9)
Mostly D's or F's	42	364	33.2	(25.2-42.3)

Figure 4. Percentage of Knox County Schools middle school students that reported they had ever been driven in a car by someone that had been drinking alcohol, 2008, 2010, 2013; by gender, race/ethnicity, grade, and estimated school grades in the past year, 2013



Section 2:
Behaviors that contribute to self-harm and violence

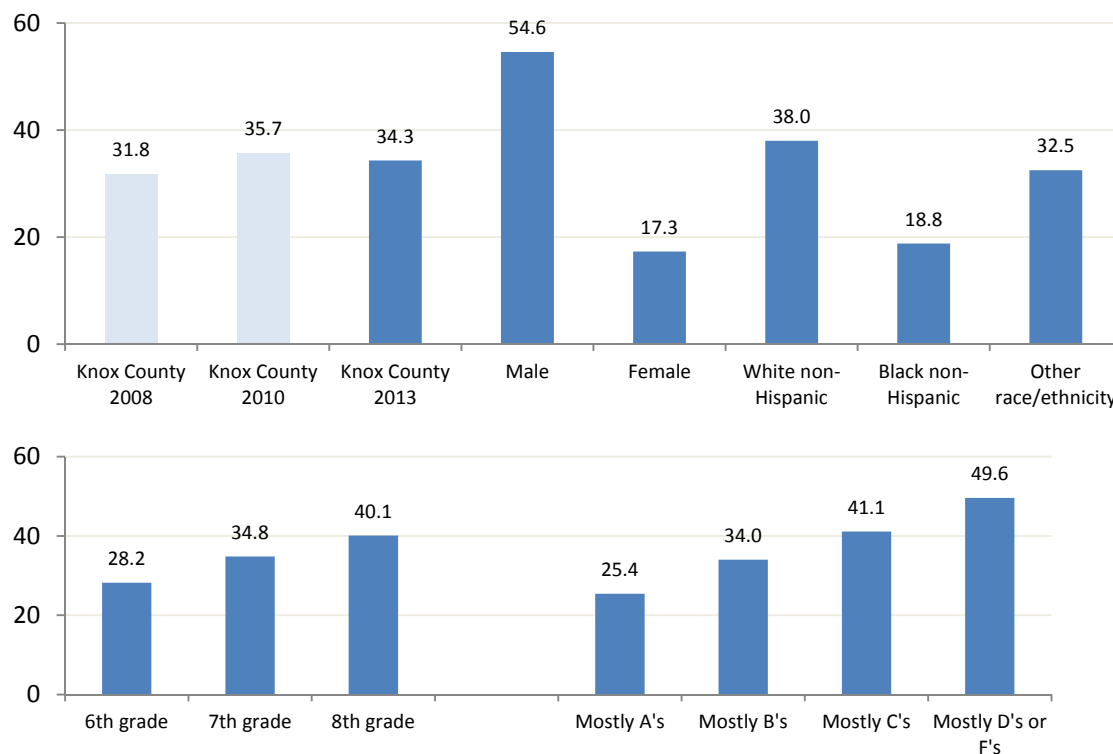
Knox County Schools Middle School Youth Risk Behavior Survey, 2013

Table 5. Percentage of Knox County Schools middle school students who reported they had ever carried a weapon (gun, knife, club), 2013

Total $n = 1,366$

	Sample n	Weighted n	Percentage	CI
Total	491	4,406	34.3	(31.8-36.9)
Male	365	3,201	54.6	(50.7-58.4)
Female	126	1,205	17.3	(14.6-20.4)
Race/Ethnicity				
White non-Hispanic	378	3,681	38.0	(35.0-41.1)
Black non-Hispanic	39	412	18.8	(13.9-25.0)
Other race/ethnicity	74	314	32.5	(26.6-38.9)
Grade in school				
6th grade	128	1,230	28.2	(24.0-32.9)
7th grade	153	1,482	34.8	(30.3-39.6)
8th grade	210	1,694	40.1	(35.9-44.4)
Estimated grades in past year				
Mostly A's	108	982	25.4	(21.3-30.0)
Mostly B's	156	1,434	34.0	(29.6-38.7)
Mostly C's	113	972	41.1	(35.0-47.4)
Mostly D's or F's	60	535	49.6	(40.4-58.8)

Figure 5. Percentage of Knox County Schools middle school students who reported they had ever carried a weapon (gun, knife, club), 2008, 2010, 2013; by gender, race/ethnicity, grade, and estimated school grades in the past year, 2013



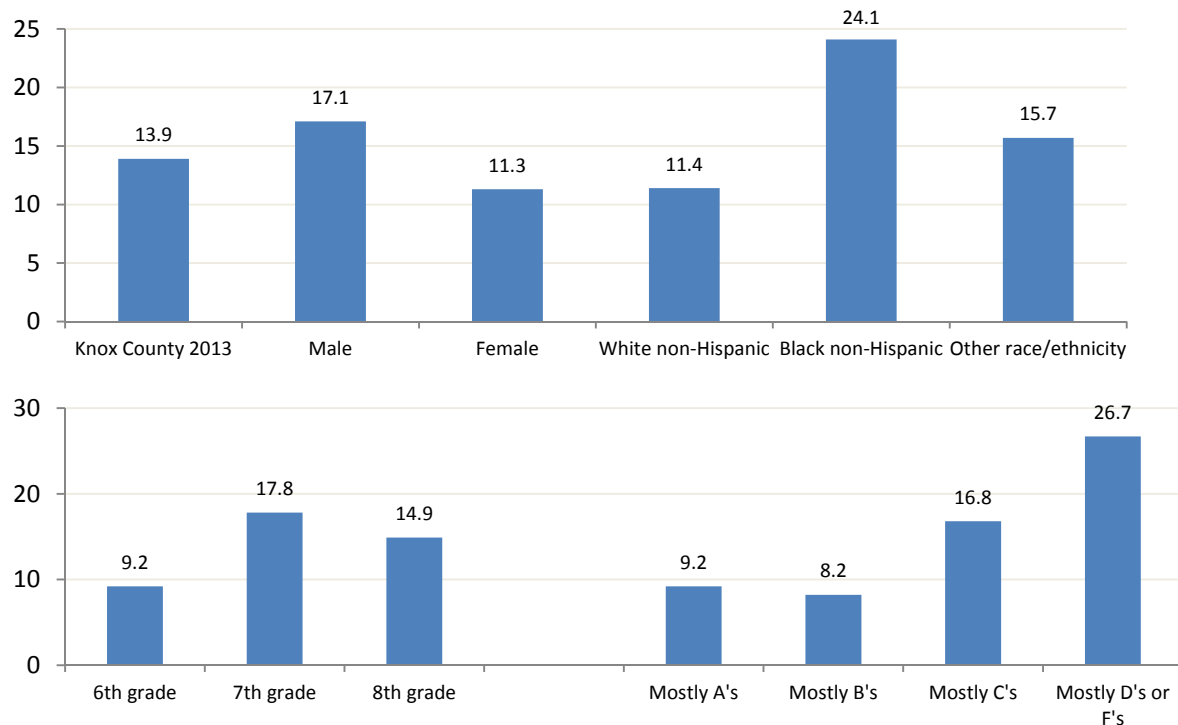
Knox County Schools Middle School Youth Risk Behavior Survey, 2013

Table 6. Percentage of Knox County Schools middle school students who reported they 'rarely' or 'never' feel safe and secure at school, 2013

Total $n = 1,378$

	Sample n	Weighted n	Percentage	CI
Total	195	1,806	13.9	(12.1-15.9)
Male	117	1,016	17.1	(14.3-20.2)
Female	78	790	11.3	(9.0-14.0)
Race/Ethnicity				
White non-Hispanic	112	1,113	11.4	(9.5-13.6)
Black non-Hispanic	48	541	24.1	(18.5-30.8)
Other race/ethnicity	35	152	15.7	(11.5-21.1)
Grade in school				
6th grade	42	405	9.2	(6.7-12.5)
7th grade	74	767	17.8	(14.3-21.9)
8th grade	79	635	14.9	(12.0-18.3)
Estimated grades in past year				
Mostly A's	39	357	9.2	(6.7-13.5)
Mostly B's	37	348	8.2	(5.9-11.3)
Mostly C's	47	402	16.8	(12.6-22.0)
Mostly D's or F's	29	295	26.7	(19.2-35.9)

Figure 6. Percentage of Knox County Schools middle school students who reported they 'rarely' or 'never' feel safe and secure at school by gender, race/ethnicity, grade, and estimated school grades in the past year, 2013



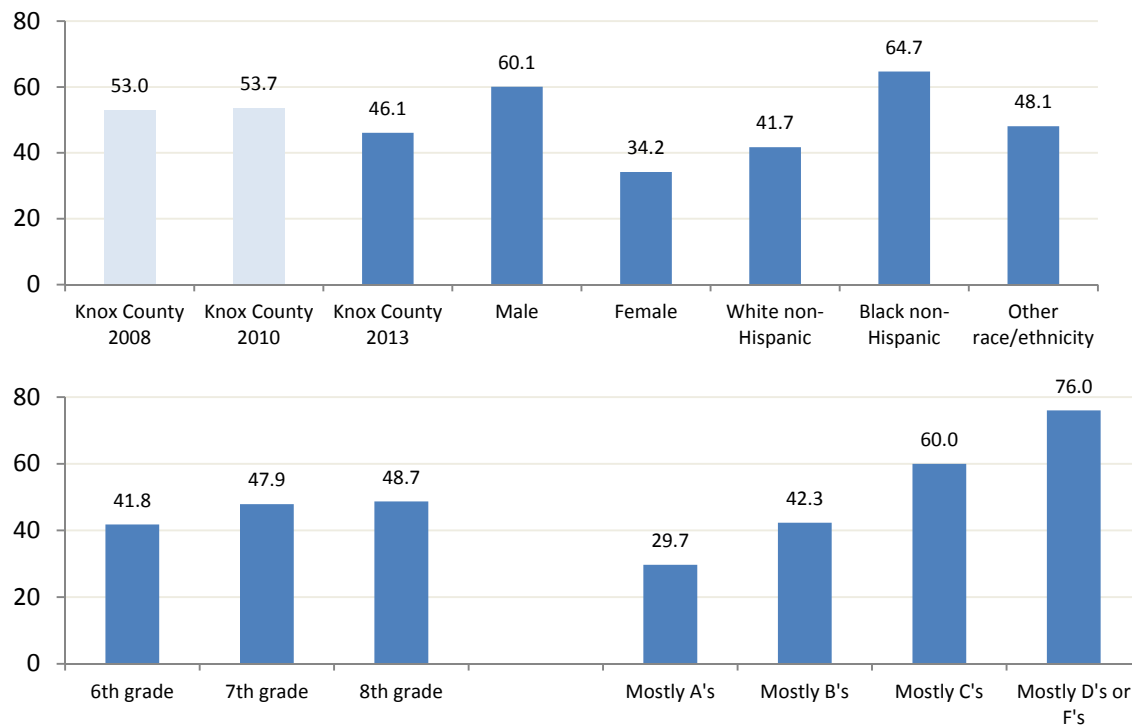
Knox County Schools Middle School Youth Risk Behavior Survey, 2013

Table 7. Percentage of Knox County Schools middle school students who reported they had ever been in a physical fight, 2013

Total $n = 1,364$

	Sample n	Weighted n	Percentage	CI
Total	638	5,908	46.1	(43.4-48.9)
Male	404	3,537	60.1	(56.2-63.9)
Female	234	2,371	34.2	(30.6-38.0)
Race/Ethnicity				
White non-Hispanic	407	4,021	41.7	(38.5-44.9)
Black non-Hispanic	123	1,422	64.7	(57.3-71.4)
Other race/ethnicity	108	466	48.1	(41.6-54.7)
Grade in school				
6th grade	179	1,806	41.8	(36.8-46.9)
7th grade	202	2,036	47.9	(43.0-52.8)
8th grade	257	2,066	48.7	(44.4-53.0)
Estimated grades in past year				
Mostly A's	123	1,142	29.7	(25.3-34.5)
Mostly B's	188	1,785	42.3	(37.5-47.1)
Mostly C's	156	1,425	60.0	(53.6-66.2)
Mostly D's or F's	90	824	76.0	(67.2-83.0)

Figure 7. Percentage of Knox County Schools middle school students who reported they had ever been in a physical fight, 2008, 2010, 2013; by gender, race/ethnicity, grade, and estimated school grades in the past year, 2013



Knox County Schools Middle School Youth Risk Behavior Survey, 2013

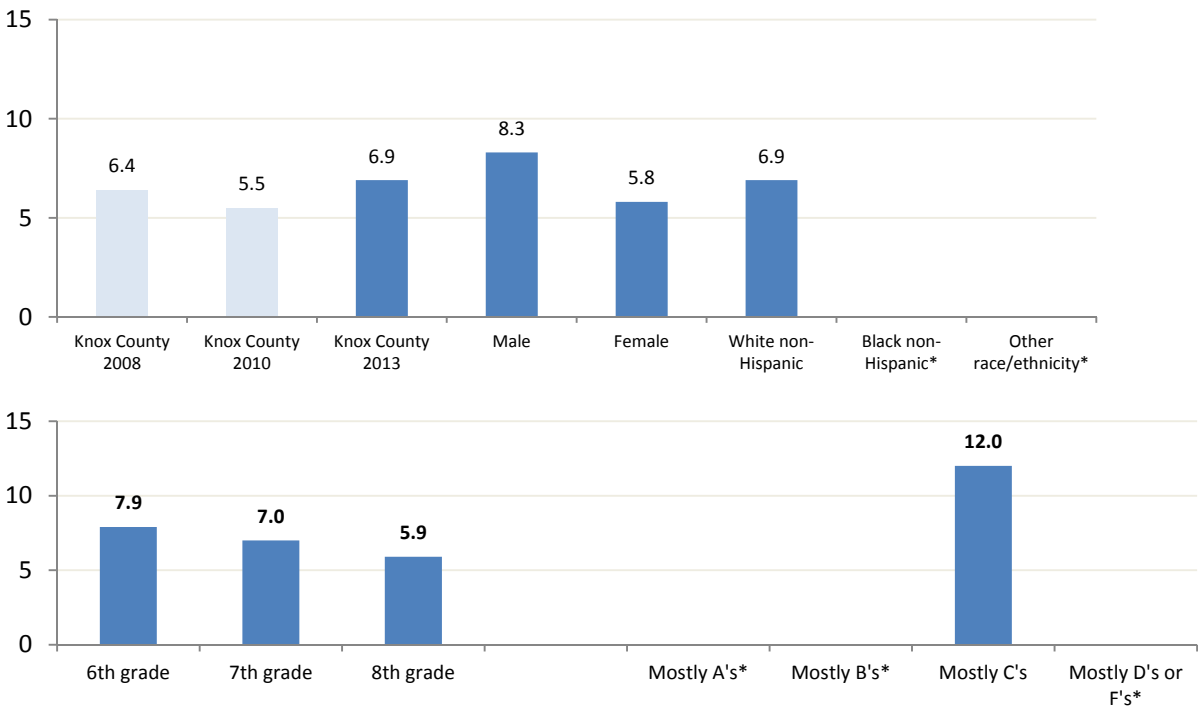
Table 8. Percentage of Knox County Schools middle school students who reported they had ever been injured in a fight badly enough to require treatment from a doctor or nurse, 2013

Total n = 1,369

	Sample n	Weighted n	Percentage	CI
Total	96	893	6.9	(5.7-8.5)
Male	57	491	8.3	(6.4-10.7)
Female	39	402	5.8	(4.2-7.9)
Race/Ethnicity				
White non-Hispanic	65	667	6.9	(5.4-8.7)
Black non-Hispanic	13	148	*	*
Other race/ethnicity	18	78	*	*
Grade in school				
6th grade	36	348	7.9	(5.7-11.0)
7th grade	29	297	7.0	(4.8-9.9)
8th grade	31	248	5.9	(4.1-8.3)
Estimated grades in past year				
Mostly A's	18	171	*	*
Mostly B's	18	154	*	*
Mostly C's	31	286	12.0	(8.4-16.8)
Mostly D's or F's	12	110	*	*

*Too unreliable to report

Figure 8. Percentage of Knox County Schools middle school students who reported they had ever been injured in a fight badly enough to require treatment from a doctor or nurse, 2008, 2010, 2013; by gender, race/ethnicity, grade, and estimated school grades in the past year, 2013



*Too unreliable to report

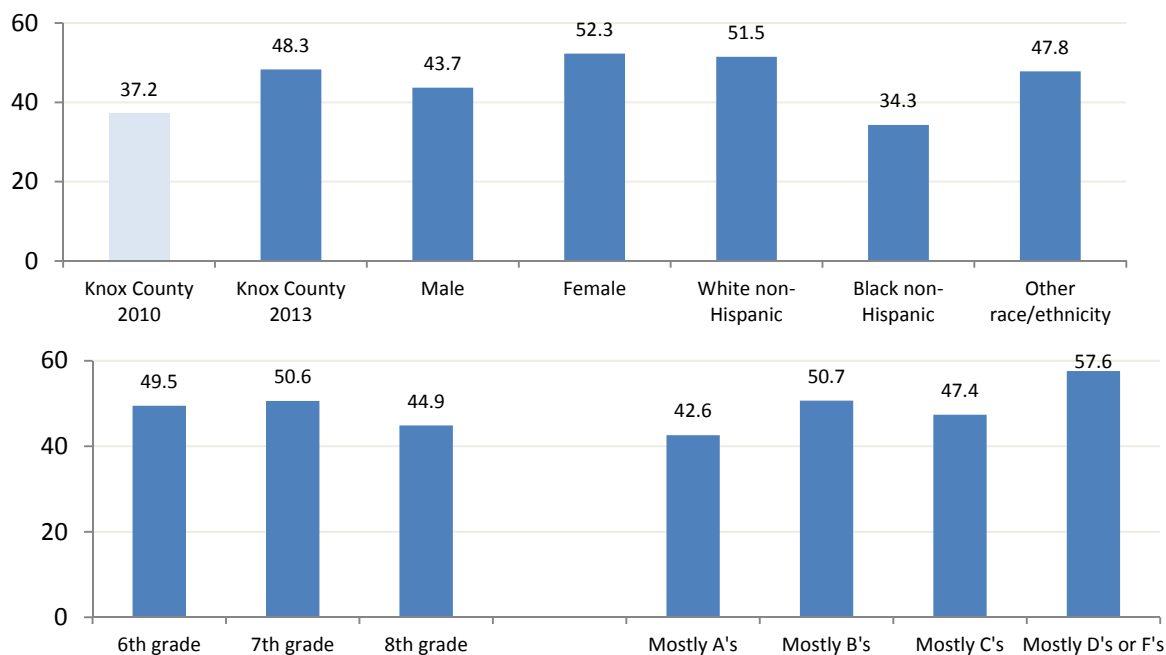
Knox County Schools Middle School Youth Risk Behavior Survey, 2013

Table 9. Percentage of Knox County Schools middle school students who reported they had ever been bullied on school property, 2013

Total $n = 1,371$

	Sample n	Weighted n	Percentage	CI
Total	659	6,227	48.3	(45.6-51.1)
Male	294	2,585	43.7	(39.9-47.6)
Female	365	3,641	52.3	(48.4-56.2)
Race/Ethnicity				
White non-Hispanic	491	5,018	51.5	(48.3-54.7)
Black non-Hispanic	62	745	34.3	(27.7-41.7)
Other race/ethnicity	106	465	47.8	(41.3-54.4)
Grade in school				
6th grade	206	2,156	49.5	(44.4-54.6)
7th grade	212	2,163	50.6	(45.7-55.5)
8th grade	241	1,907	44.9	(40.6-49.2)
Estimated grades in past year				
Mostly A's	170	1,647	42.6	(37.6-47.7)
Mostly B's	224	2,145	50.7	(45.8-55.6)
Mostly C's	125	1,127	47.4	(41.1-53.8)
Mostly D's or F's	69	630	57.6	(48.3-66.3)

Figure 9. Percentage of Knox County Schools middle school students who reported they had ever been bullied on school property, 2010, 2013; by gender, race/ethnicity, grade, and estimated school grades in the past year, 2013



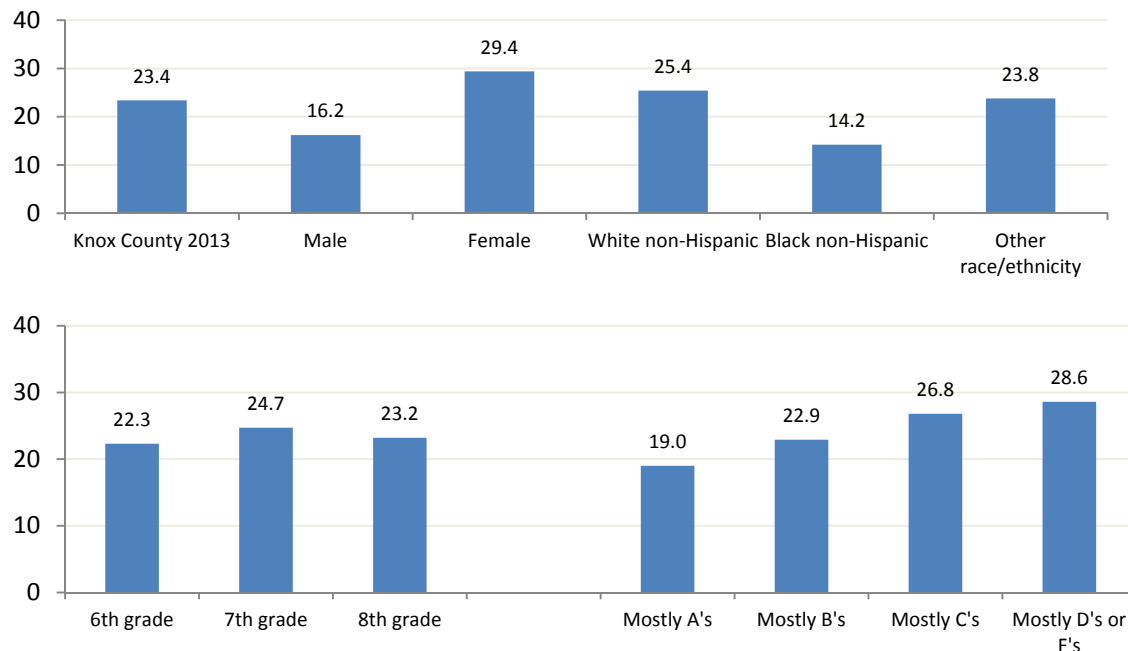
Knox County Schools Middle School Youth Risk Behavior Survey, 2013

Table 10. Percentage of Knox County Schools middle school students who reported they had ever been bullied electronically (email, chat rooms, instant messages, websites, or texts), 2013

Total $n = 1,358$

	Sample n	Weighted n	Percentage	CI
Total	321	2,986	23.4	(21.1-25.8)
Male	109	949	16.2	(13.6-19.3)
Female	212	2,037	29.4	(26.0-33.1)
Race/Ethnicity				
White non-Hispanic	244	2,455	25.4	(22.7-28.3)
Black non-Hispanic	25	304	14.2	(9.7-20.4)
Other race/ethnicity	52	227	23.8	(18.6-29.9)
Grade in school				
6th grade	91	959	22.3	(18.3-26.8)
7th grade	101	1,057	24.7	(20.7-29.2)
8th grade	129	980	23.2	(19.8-27.0)
Estimated grades in past year				
Mostly A's	78	727	19.0	(15.4-23.3)
Mostly B's	100	963	22.9	(19.1-27.3)
Mostly C's	73	636	26.8	(21.6-32.8)
Mostly D's or F's	34	308	28.6	(21.0-37.7)

Figure 10. Percentage of Knox County Schools middle school students who reported they had ever been bullied electronically (email, chat rooms, instant messages, websites, or texts) by gender, race/ethnicity, grade, and estimated school grades in the past year, 2013



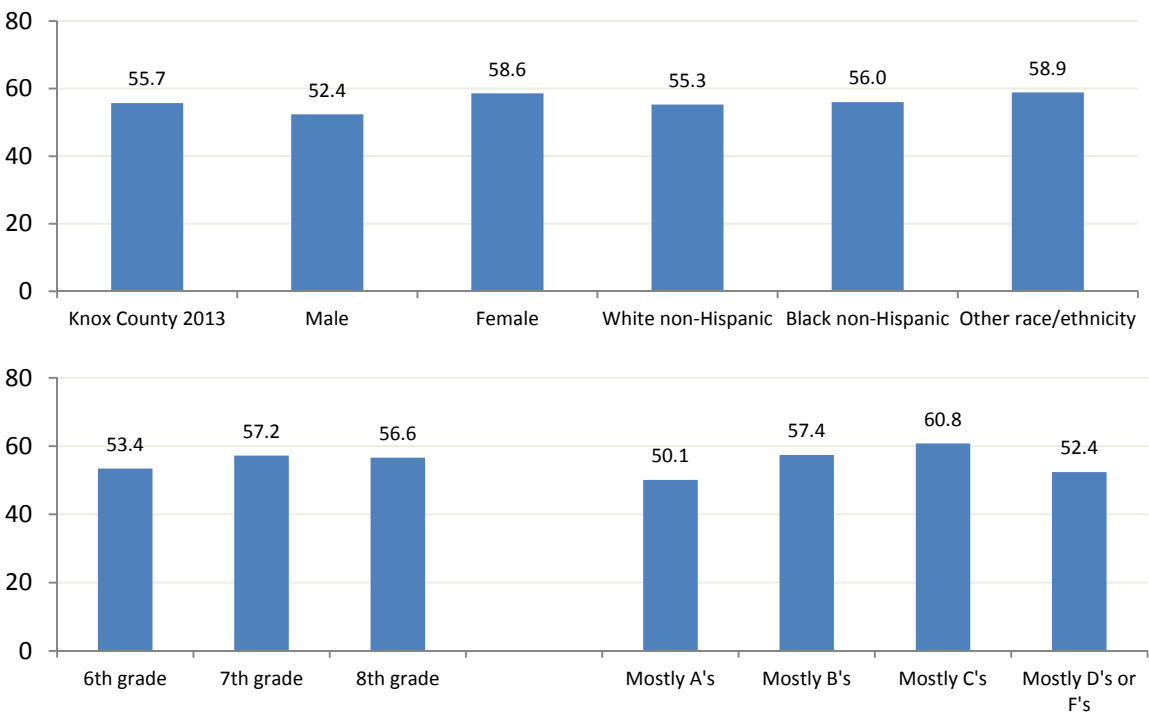
Knox County Schools Middle School Youth Risk Behavior Survey, 2013

Table 11. Percentage of Knox County Schools middle school students who reported they ‘agree’ or ‘strongly agree’ that harassment and bullying by students is a problem at their school, 2013

Total $n = 1,371$

	Sample n	Weighted n	Percentage	CI
Total	768	7,179	55.7	(53.0-59.4)
Male	355	3,104	52.4	(48.5-56.2)
Female	413	4,074	58.6	(54.6-62.4)
Race/Ethnicity				
White non-Hispanic	534	5,372	55.3	(52.1-58.5)
Black non-Hispanic	104	1,233	56.0	(48.6-63.1)
Other race/ethnicity	130	573	58.9	(52.4-65.2)
Grade in school				
6th grade	221	2,337	53.4	(48.3-58.4)
7th grade	245	2,448	57.2	(52.3-62.0)
8th grade	302	2,394	56.6	(52.3-60.8)
Estimated grades in past year				
Mostly A's	207	1,950	50.1	(45.1-55.1)
Mostly B's	252	2,409	57.4	(52.6-62.2)
Mostly C's	160	1,451	60.8	(54.3-66.9)
Mostly D's or F's	63	563	52.4	(43.1-61.6)

Figure 11. Percentage of Knox County Schools middle school students who reported they ‘agree’ or ‘strongly agree’ that harassment and bullying by students is a problem at their school by gender, race/ethnicity, grade, and estimated school grades in the past year, 2013



Knox County Schools Middle School Youth Risk Behavior Survey, 2013

Table 12. Percentage of Knox County Schools middle school students who reported they had ever seriously thought about committing suicide, 2013

Total $n = 1,363$

	Sample n	Weighted n	Percentage	CI
Total	273	2,444	19.0	(17.0-21.3)
Male	107	107	15.1	(12.6-18.1)
Female	166	166	22.4	(19.3-25.8)
Race/Ethnicity				
White non-Hispanic	187	1,855	19.2	(16.8-21.8)
Black non-Hispanic	28	330	15.1	(10.6-21.2)
Other race/ethnicity	58	258	27.0	(21.5-33.3)
Grade in school				
6th grade	66	675	15.5	(12.1-19.5)
7th grade	94	903	21.3	(17.6-25.6)
8th grade	113	866	20.5	(17.3-24.2)
Estimated grades in past year				
Mostly A's	52	481	12.5	(9.6-16.2)
Mostly B's	85	781	18.6	(15.1-22.6)
Mostly C's	60	494	21.0	(16.4-26.5)
Mostly D's or F's	40	367	33.0	(24.9-42.3)

Figure 12. Percentage of Knox County Schools middle school students who reported they had ever seriously thought about committing suicide, 2008, 2010, 2013; by gender, race/ethnicity, grade, and estimated school grades in the past year, 2013

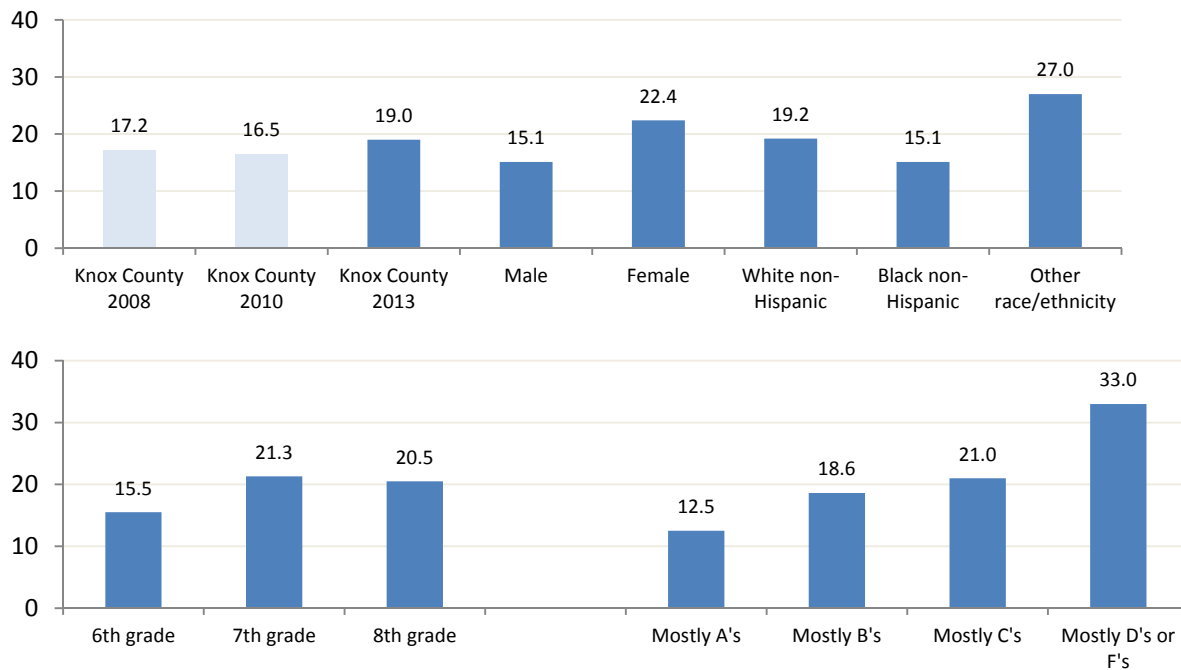


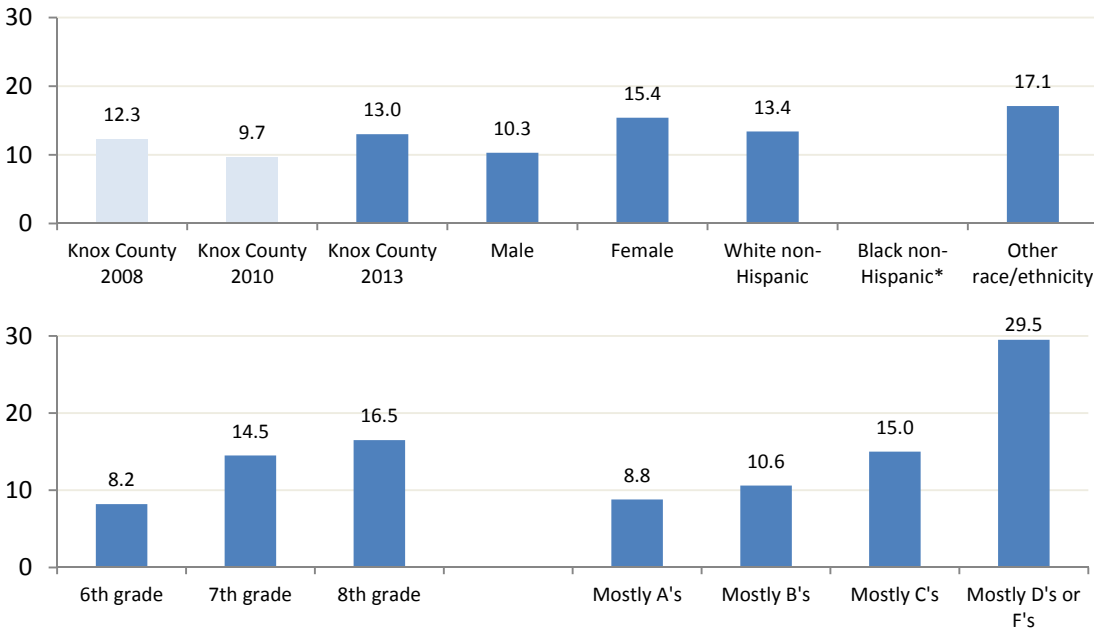
Table 13. Percentage of Knox County Schools middle school students who reported they had ever made a plan to commit suicide, 2013

Total n = 1,365

	Sample n	Weighted n	Percentage	CI
Total	189	1,669	13.0	(11.3-14.9)
Male	72	606	10.3	(8.2-12.8)
Female	117	1,063	15.4	(12.8-18.3)
Race/Ethnicity				
White non-Hispanic	133	1,296	13.4	(11.4-15.7)
Black non-Hispanic	19	208	*	*
Other race/ethnicity	37	165	17.1	(12.7-22.8)
Grade in school				
6th grade	35	355	8.2	(5.8-11.4)
7th grade	65	615	14.5	(11.4-19.3)
8th grade	89	700	16.5	(13.5-19.9)
Estimated grades in past year				
Mostly A's	38	341	8.8	(6.4-12.1)
Mostly B's	49	444	10.6	(8.0-14.0)
Mostly C's	43	354	15.0	(11.1-19.9)
Mostly D's or F's	35	318	29.5	(21.8-38.7)

*Too unreliable to report

Figure 13. Percentage of Knox County Schools middle school students who reported they had ever made a plan to commit suicide, 2008, 2010, 2013; by gender, race/ethnicity, grade, and estimated school grades in the past year, 2013



*Too unreliable to report

Knox County Schools Middle School Youth Risk Behavior Survey, 2013

Table 14. Percentage of Knox County Schools middle school students who reported they had ever attempted suicide, 2013

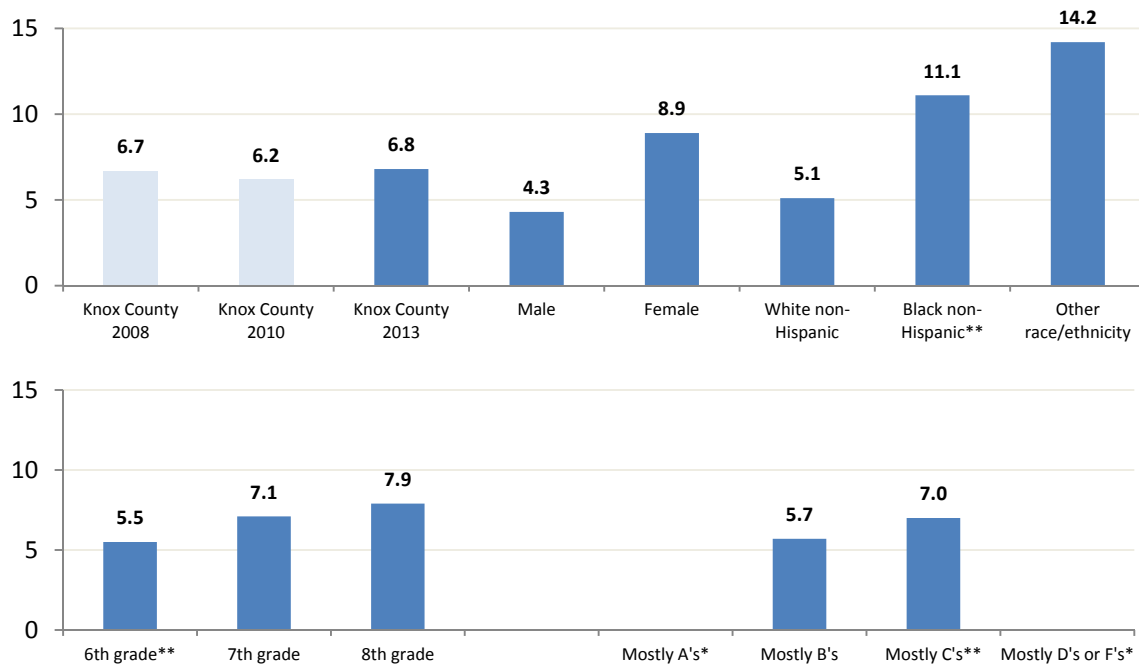
Total *n* = 1,366

	Sample n	Weighted n	Percentage	CI
Total	102	874	6.8	(5.6-8.3)
Male	31	255	4.3	(3.0-6.2)
Female	71	619	8.9	(7.0-11.3)
Race/Ethnicity				
White non-Hispanic	50	492	5.1	(3.9-6.7)
Black non-Hispanic	22	246	11.1**	(7.3-16.5)**
Other race/ethnicity	30	136	14.2	(10.1-19.5)
Grade in school				
6th grade	24	239	5.5**	(3.6-8.3)**
7th grade	33	299	7.1	(4.9-10.0)
8th grade	45	336	7.9	(5.9-10.5)
Estimated grades in past year				
Mostly A's	16	150	*	*
Mostly B's	27	240	5.7	(3.8-8.4)
Mostly C's	21	165	7.0**	(4.4-10.9)**
Mostly D's or F's	18	161	*	*

*Too unreliable to report

**Limited reliability-interpret with extreme caution

Figure 14. Percentage of Knox County Schools middle school students who reported they had ever attempted suicide, 2008, 2010, 2013; by gender, race/ethnicity, grade, and estimated school grades in the past year, 2013



*Too unreliable to report

**Limited reliability-interpret with extreme caution

Section 3:

Tobacco use

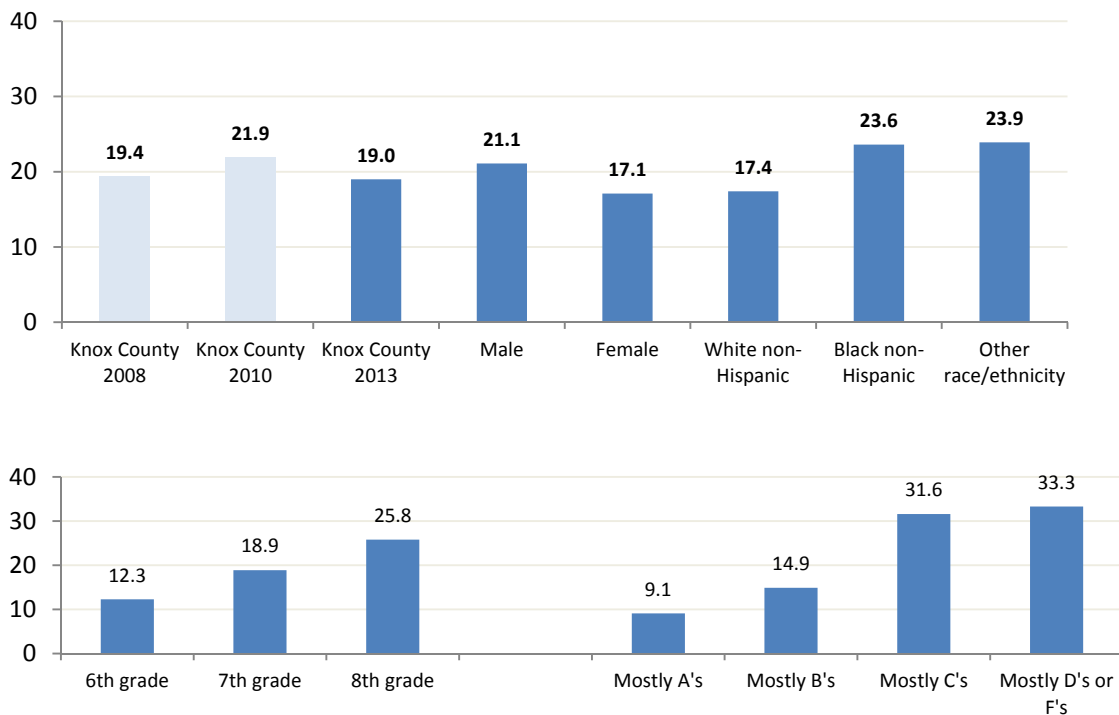
Knox County Schools Middle School Youth Risk Behavior Survey, 2013

Table 15. Percentage of Knox County Schools middle school students who reported they had ever tried smoking cigarettes, even one or two puffs, 2013

Total $n = 1,368$

	Sample n	Weighted n	Percentage	CI
Total	276	2,439	19.0	(16.9-21.2)
Male	145	1,246	21.1	(18.1-24.5)
Female	131	1,194	17.1	(14.5-20.2)
Race/Ethnicity				
White non-Hispanic	176	1,689	17.4	(15.2-19.9)
Black non-Hispanic	47	520	23.6	(18.0-30.2)
Other race/ethnicity	53	230	23.9	(18.8-30.0)
Grade in school				
6th grade	55	529	12.3	(9.4-15.9)
7th grade	81	810	18.9	(15.3-23.0)
8th grade	140	1,101	25.8	(22.3-29.8)
Estimated grades in past year				
Mostly A's	40	351	9.1	(6.6-12.3)
Mostly B's	71	626	14.9	(11.8-18.6)
Mostly C's	84	742	31.6	(26.1-37.8)
Mostly D's or F's	43	364	33.3	(25.3-42.3)

Figure 15. Percentage of Knox County Schools middle school students who reported they had ever tried smoking cigarettes, even one or two puffs, 2008, 2010, 2013; by gender, race/ethnicity, grade, and estimated school grades in the past year, 2013



Knox County Schools Middle School Youth Risk Behavior Survey, 2013

Table 16. Percentage of Knox County Schools middle school students who reported they smoked their first cigarettes before age 11 years, 2013

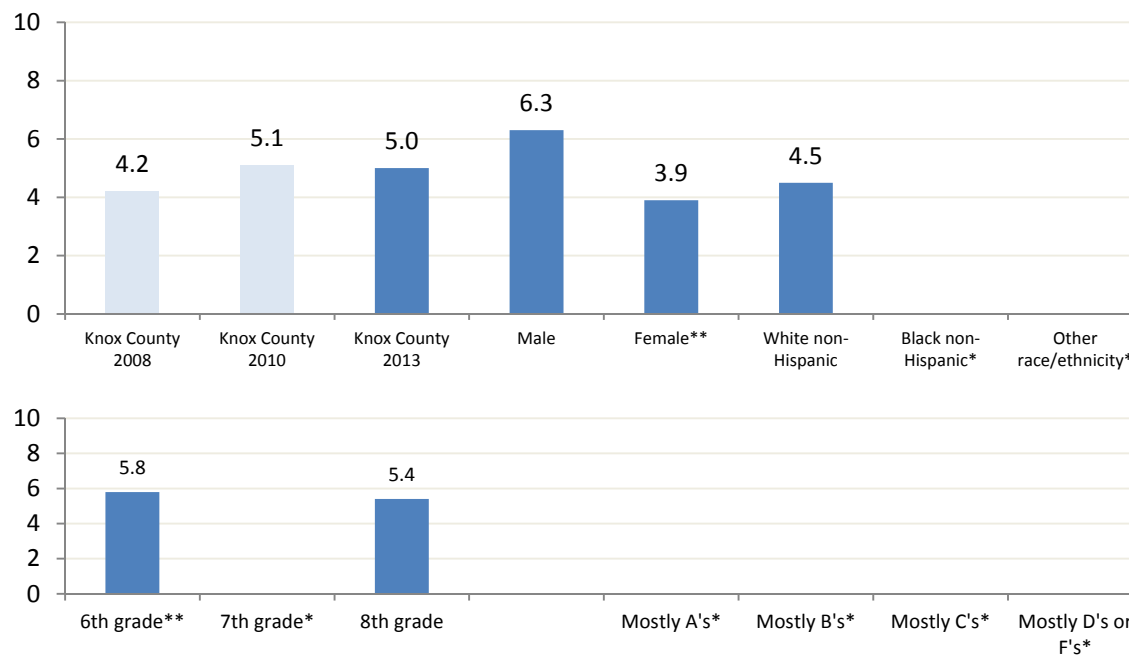
Total $n = 1,357$

	Sample n	Weighted n	Percentage	CI
Total	68	638	5.0	(3.9-6.4)
Male	43	367	6.3	(4.7-8.5)
Female	25	271	3.9**	(2.6-5.9)**
Race/Ethnicity				
White non-Hispanic	44	437	4.5	(3.4-6.1)
Black non-Hispanic	12	149	*	*
Other race/ethnicity	12	53	*	*
Grade in School				
6th grade	24	251	5.8**	(3.8-8.7)**
7th grade	16	160	*	*
8th grade	28	227	5.4	(3.7-7.8)
Estimated grades in past year				
Mostly A's	4	36	*	*
Mostly B's	18	172	*	*
Mostly C's	19	181	*	*
Mostly D's or F's	16	143	*	*

*Too unreliable to report

**Limited reliability-interpret with extreme caution

Figure 16. Percentage of Knox County Schools middle school students who reported they smoked their first cigarettes before age 11 years, 2008, 2010, 2013; by gender, race/ethnicity, grade, and estimated school grades in the past year, 2013



*Too unreliable to report

**Limited reliability-interpret with extreme caution

Knox County Schools Middle School Youth Risk Behavior Survey, 2013

Table 17. Percentage of Knox County Schools middle school students who reported they smoked cigarettes one or more days in the past 30 days, 2013

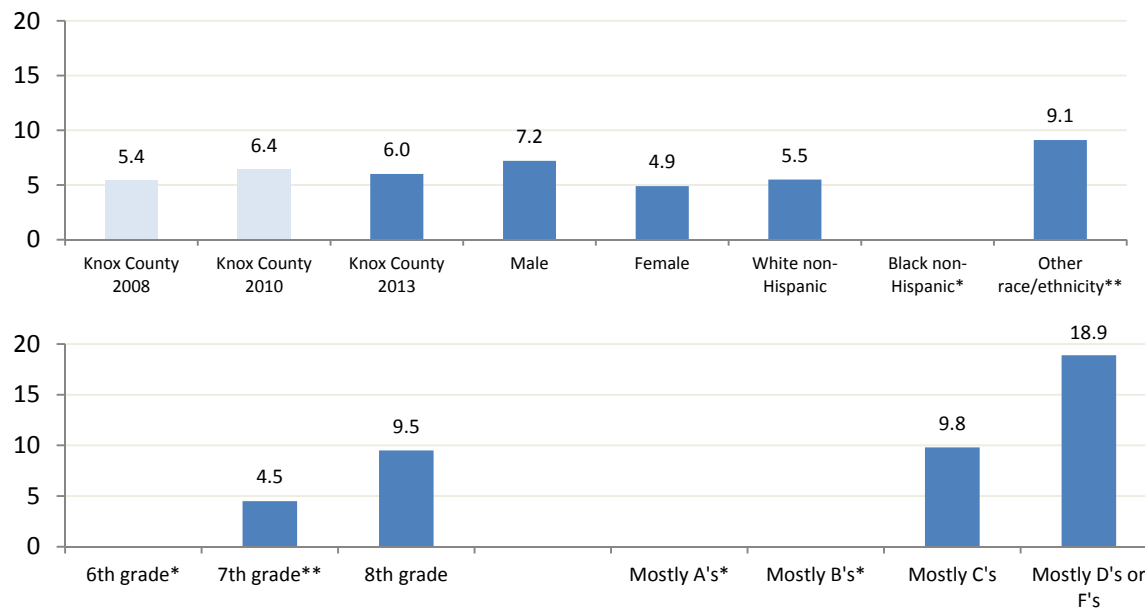
Total n = 1,360

	Sample n	Weighted n	Percentage	CI
Total	90	762	6.0	(4.8-7.3)
Male	51	421	7.2	(5.4-9.4)
Female	39	341	4.9	(3.5-6.8)
Race/Ethnicity				
White non-Hispanic	56	531	5.5	(4.2-7.1)
Black non-Hispanic	14	144	*	*
Other race/ethnicity	20	87	9.1**	(6.0-13.8)**
Grade in school				
6th grade	18	174	*	*
7th grade	21	191	4.5**	(2.9-6.9)**
8th grade	51	398	9.5	(7.2-12.3)
Estimated grades in past year				
Mostly A's	7	64	*	*
Mostly B's	17	138	*	*
Mostly C's	28	230	9.8	(6.7-14.1)
Mostly D's or F's	23	207	18.9	(12.6-27.2)

*Too unreliable to report

**Limited reliability-interpret with extreme caution

Figure 17. Percentage of Knox County Schools middle school students who reported they smoked cigarettes one or more days in the past 30 days, 2008, 2010, 2013; by gender, race/ethnicity, grade, and estimated school grades in the past year, 2013



*Too unreliable to report

**Limited reliability-interpret with extreme caution

Knox County Schools Middle School Youth Risk Behavior Survey, 2013

Table 18. Percentage of Knox County Schools middle school students who reported they had ever smoked cigarettes every day for 30 days in a row, 2013

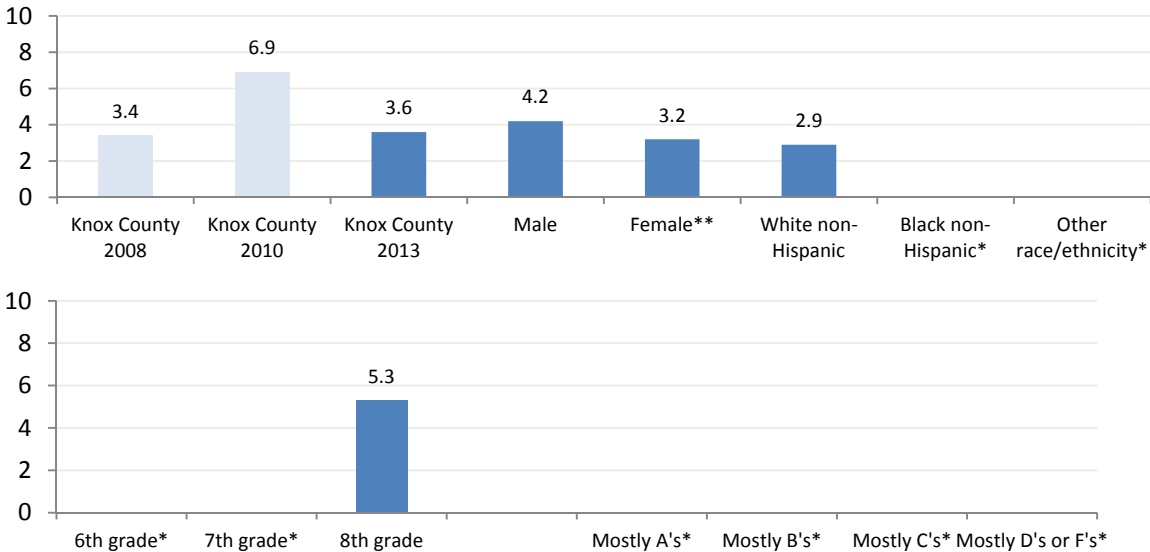
Total n = 1,358

	Sample n	Weighted n	Percentage	CI
Total	54	462	3.6	(2.7-4.8)
Male	30	244	4.2	(2.9-6.0)
Female	24	219	3.2**	(2.1-4.8)**
Race/Ethnicity				
White non-Hispanic	30	283	2.9	(2.0-4.2)
Black non-Hispanic	10	119	*	*
Other race/ethnicity	14	61	*	*
Grade in school				
6th grade	12	109	*	*
7th grade	13	130	*	*
8th grade	29	224	5.3	(3.7-7.6)
Estimated grades in past year				
Mostly A's	6	46	*	*
Mostly B's	11	103	*	*
Mostly C's	15	132	*	*
Mostly D's or F's	11	86	*	*

*Too unreliable to report

**Limited reliability-interpret with extreme caution

Figure 18. Percentage of Knox County Schools middle school students who reported they had ever smoked cigarettes every day for 30 days in a row, 2008, 2010, 2013; by gender, race/ethnicity, grade, and estimated school grades in the past year, 2013



*Too unreliable to report

**Limited reliability-interpret with extreme caution

Knox County Schools Middle School Youth Risk Behavior Survey, 2013

Table 19. Percentage of Knox County Schools middle school students who used chewing tobacco, snuff, or dip, in the past 30 days, 2013

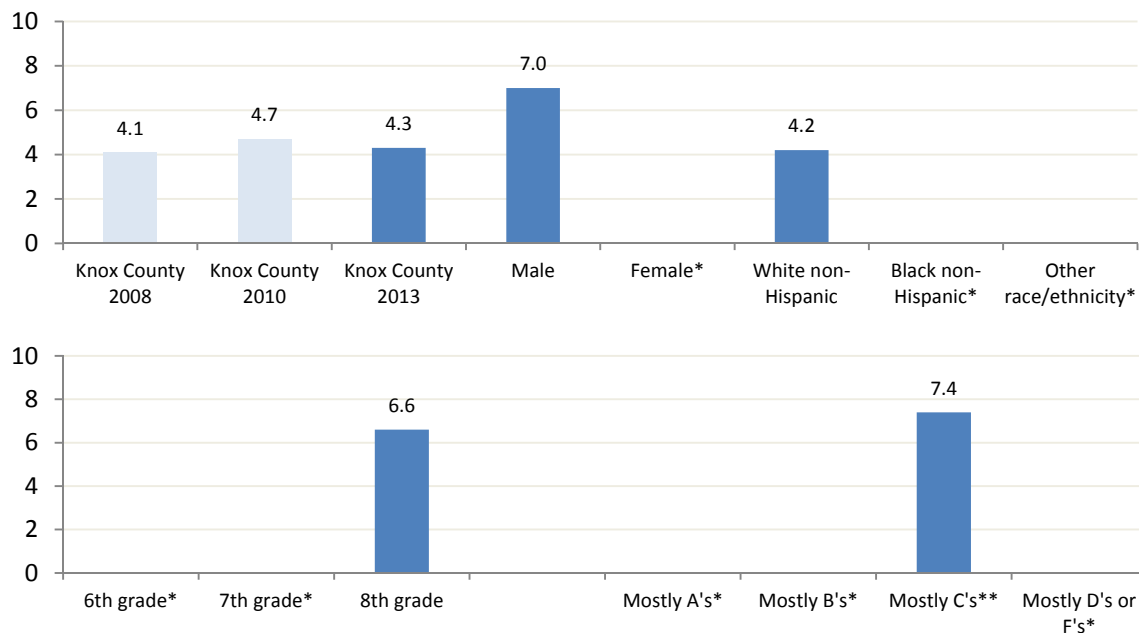
Total $n = 1,369$

	Sample n	Weighted n	Percentage	CI
Total	64	553	4.3	(3.3-5.5)
Male	51	414	7.0	(5.3-9.2)
Female	13	139	*	*
Race/Ethnicity				
White non-Hispanic	43	407.1	4.2	(3.1-5.6)
Black non-Hispanic	10	102	*	*
Other race/ethnicity	11	45	*	*
Grade in School				
6th grade	14	153	*	*
7th grade	14	120	*	*
8th grade	36	280	6.6	(4.8-9.1)
Estimated grades in past year				
Mostly A's	7	62	*	*
Mostly B's	16	139	*	*
Mostly C's	20	175	7.4**	(4.7-11.3)**
Mostly D's or F's	12	105	*	*

*Too unreliable to report

**Limited reliability-interpret with extreme caution

Figure 19. Percentage of Knox County Schools middle school students who used chewing tobacco, snuff, or dip, in the past 30 days, 2008, 2010, 2013; by gender, race/ethnicity, grade, and estimated school grades in the past year, 2013



*Too unreliable to report

**Limited reliability-interpret with extreme caution

Knox County Schools Middle School Youth Risk Behavior Survey, 2013

Table 20. Percentage of Knox County Schools middle school students who reported they smoked cigars, cigarillos, or little cigars on one or more days during the past 30 days, 2013

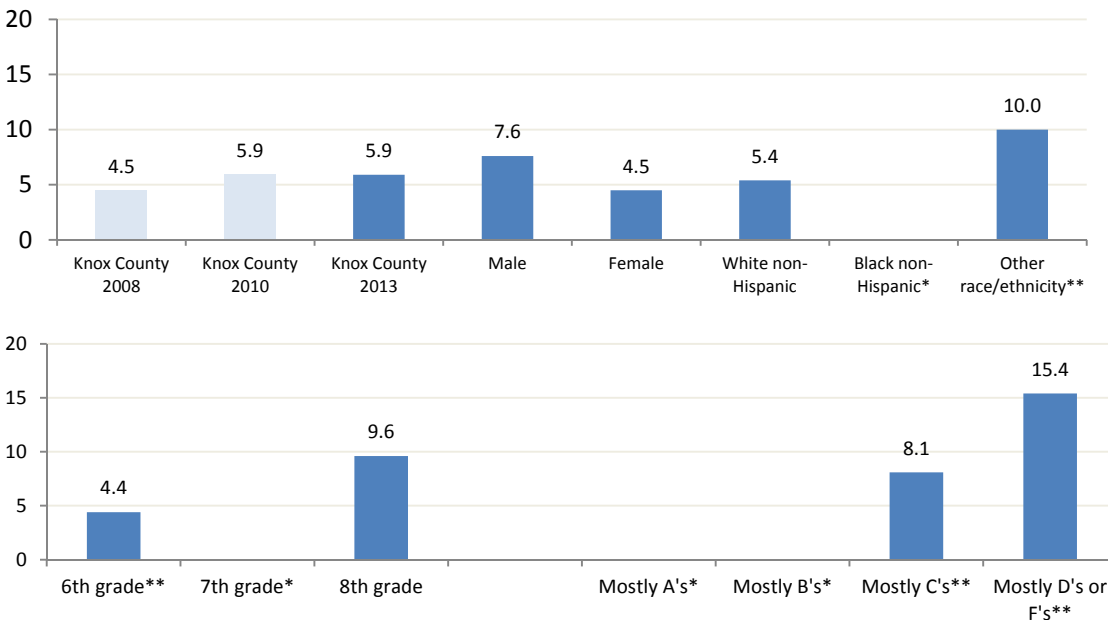
Total n = 1,359

	Sample n	Weighted n	Percentage	CI
Total	91	757	5.9	(4.8-7.3)
Male	54	448	7.6	(5.9-9.9)
Female	37	309	4.5	(3.2-6.3)
Race/Ethnicity				
White non-Hispanic	56	525	5.4	(4.2-7.0)
Black non-Hispanic	*	*	*	*
Other race/ethnicity	22	96	10.0**	(6.7-14.8)**
Grade in school				
6th grade	21	187	4.4**	(2.8-6.8)**
7th grade	*	*	*	*
8th grade	52	405	9.6	(7.4-12.5)
Estimated grades in past year				
Mostly A's	*	*	*	*
Mostly B's	*	*	*	*
Mostly C's	22	191	8.1**	(5.3-12.3)**
Mostly D's or F's	20	169	15.4**	(10.0-23.0)**

*Too unreliable to report

**Limited reliability-interpret with extreme caution

Figure 20. Percentage of Knox County Schools middle school students who reported they smoked cigars, cigarillos, or little cigars on one or more days during the past 30 days, 2008, 2010, 2013; by gender, race/ethnicity, grade, and estimated school grades in the past year, 2013



*Too unreliable to report

**Limited reliability-interpret with extreme caution

Knox County Schools Middle School Youth Risk Behavior Survey, 2013

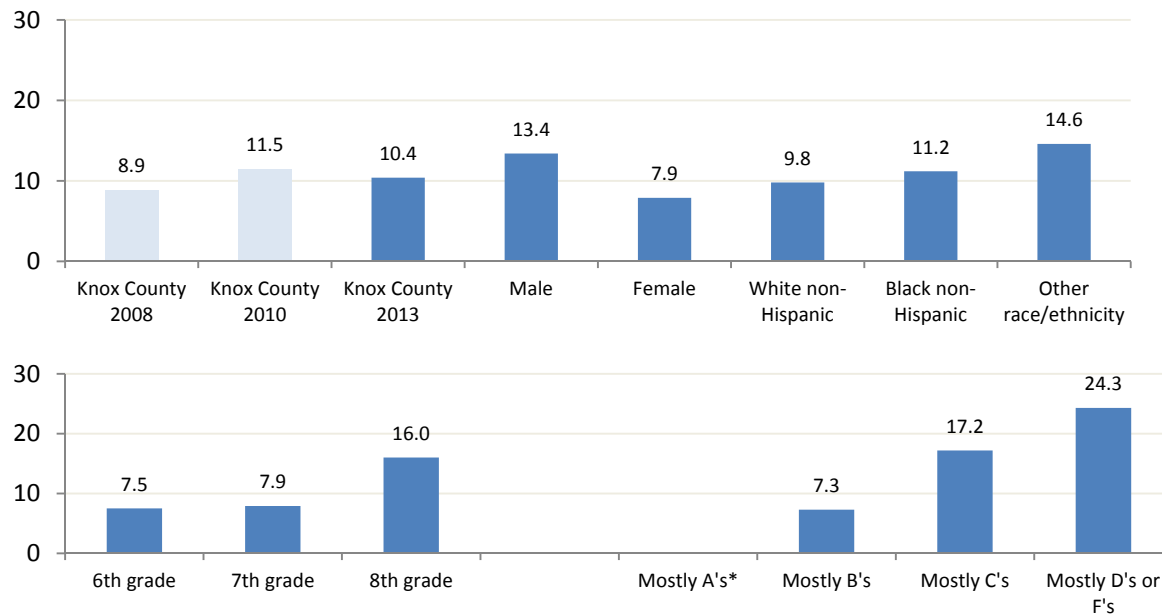
Table 21. Percentage of Knox County Schools middle school students who used tobacco in any form, including cigarettes, cigars, or smokeless tobacco products, on one or more days during the past 30 days, 2013

Total $n = 1,380$

	Sample n	Weighted n	Percentage	CI
Total	158	1,353	10.4	(8.9-12.2)
Male	95	799	13.4	(11.0-16.2)
Female	63	554	7.9	(6.1-10.2)
Race/Ethnicity				
White non-Hispanic	101	959	9.8	(8.1-11.8)
Black non-Hispanic	24	252	11.2	(7.5-16.4)
Other race/ethnicity	33	143	14.6	(10.5-19.8)
Grade in School				
6th grade	34	330	7.5	(5.3-10.5)
7th grade	37	340	7.9	(5.7-10.9)
8th grade	87	683	16.0	(13.1-19.4)
Estimated grades in past year				
Mostly A's	18	155	*	*
Mostly B's	36	308	7.3	(5.2-10.1)
Mostly C's	49	412	17.2	(13.1-22.3)
Mostly D's or F's	30	269	24.3	(17.3-33.0)

**Too unreliable to report*

Figure 21. Percentage of Knox County Schools middle school students who used tobacco in any form, including cigarettes, cigars, or smokeless tobacco products, on one or more days during the past 30 days, 2008, 2010, 2013; by gender, race/ethnicity, grade, and estimated school grades in the past year, 2013



**Too unreliable to report*

Section 4:
Alcohol and other drug use

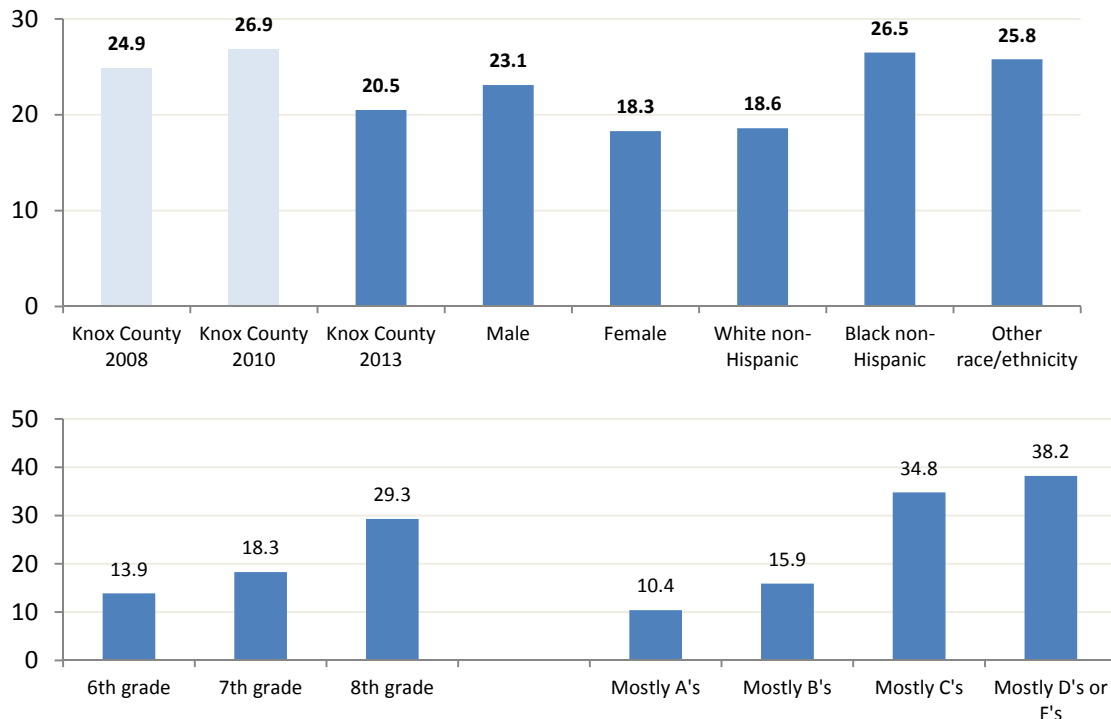
Knox County Schools Middle School Youth Risk Behavior Survey, 2013

Table 22. Percentage of Knox County Schools middle school students who reported they had ever tried drinking alcohol (other than a few sips or for religious purposes), 2013

Total $n = 1,353$

	Sample n	Weighted n	Percentage	CI
Total	297	2,609	20.5	(18.4-22.7)
Male	158	1,347	23.1	(19.9-26.5)
Female	139	1,262	18.3	(15.5-21.4)
Race/Ethnicity				
White non-Hispanic	188	1,793	18.6	(16.3-21.2)
Black non-Hispanic	53	575	26.5	(20.6-33.4)
Other race/ethnicity	56	241	25.8	(20.4-32.0)
Grade in school				
6th grade	61	600	13.9	(10.8-17.8)
7th grade	78	777	18.3	(14.8-22.4)
8th grade	158	1,231	29.3	(25.6-33.4)
Estimated grades in past year				
Mostly A's	43	402	10.4	(7.7-14.0)
Mostly B's	80	665	15.9	(12.8-19.6)
Mostly C's	92	809	34.8	(29.0-41.1)
Mostly D's or F's	47	417	38.2	(29.7-47.6)

Figure 22. Percentage of Knox County Schools middle school students who reported they had ever tried drinking alcohol (other than a few sips or for religious purposes), 2008, 2010, 2013; by gender, race/ethnicity, grade, and estimated school grades in the past year, 2013



Knox County Schools Middle School Youth Risk Behavior Survey, 2013

Table 23. Percentage of Knox County Schools middle school students who reported they tried alcohol other than a few sips before 11 years of age, 2013

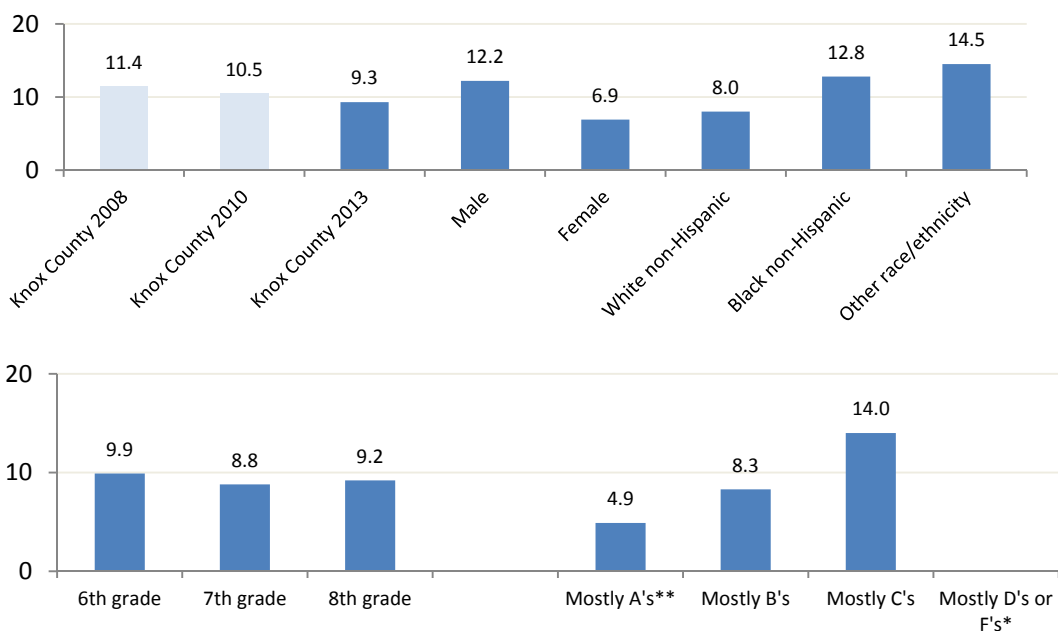
Total *n* = 1,339

	Sample n	Weighted n	Percentage	CI
Total	134	1,173	9.3	(7.9-11.0)
Male	83	706	12.2	(9.9-15.0)
Female	51	467	6.9	(5.2-9.1)
Race/Ethnicity				
White non-Hispanic	77	755	8.0	(6.4-9.9)
Black non-Hispanic	26	283	12.8	(8.8-18.4)
Other race/ethnicity	31	136	14.5	(10.4-19.9)
Grade in school				
6th grade	47	413	9.9	(7.4-13.3)
7th grade	40	375	8.8	(6.4-12.0)
8th grade	47	386	9.2	(7.0-12.1)
Estimated grades in past year				
Mostly A's	21	190	4.9**	(3.2-7.6)**
Mostly B's	40	335	8.3	(6.0-11.3)
Mostly C's	38	326	14.0	(10.2-18.9)
Mostly D's or F's	*	*	*	*

*Too unreliable to report

**Limited reliability-interpret with extreme caution

Figure 23. Percentage of Knox County Schools middle school students who reported they tried alcohol other than a few sips before 11 years of age, 2008, 2010, 2013; by gender, race/ethnicity, grade, and estimated school grades in the past year, 2013



*Too unreliable to report

**Limited reliability-interpret with extreme caution

Knox County Schools Middle School Youth Risk Behavior Survey, 2013

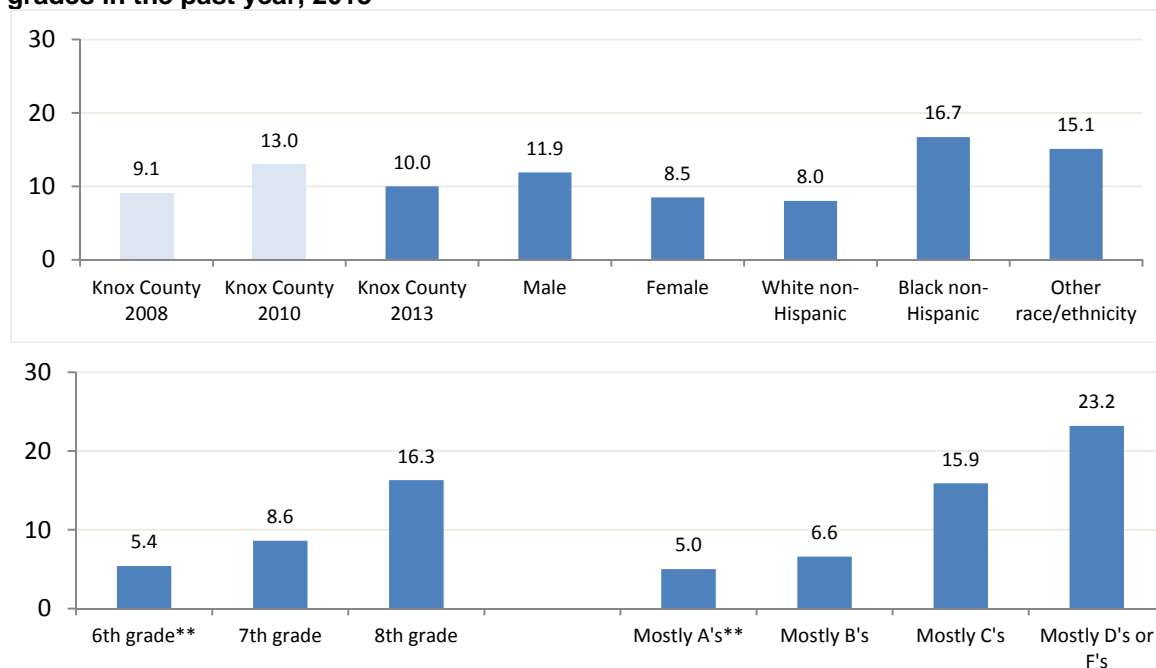
Table 24. Percentage of Knox County Schools middle school students who reported they had ever used marijuana, 2013

Total $n = 1,358$

	Sample n	Weighted n	Percentage	CI
Total	151	1,284	10.0	(8.6-11.8)
Male	82	692	11.9	(9.6-14.6)
Female	69	591	8.5	(6.7-10.8)
Race/Ethnicity				
White non-Hispanic	83	770	8.0	(6.5-9.8)
Black non-Hispanic	35	369	16.7	(12.1-22.7)
Other race/ethnicity	33	145	15.1	(10.9-20.4)
Grade in school				
6th grade	27	234	5.4**	(3.6-8.0)**
7th grade	39	367	8.6	(6.2-11.7)
8th grade	85	683	16.3	(13.4-19.8)
Estimated grades in past year				
Mostly A's	22	195	5.0**	(3.3-7.7)**
Mostly B's	35	278	6.6	(4.7-9.2)
Mostly C's	43	366	15.9	(11.8-21.0)
Mostly D's or F's	28	250	23.2	(16.2-32.1)

**Limited reliability-interpret with extreme caution

Figure 24. Percentage of Knox County Schools middle school students who reported they had ever used marijuana, 2008, 2010, 2013; by gender, race/ethnicity, grade, and estimated school grades in the past year, 2013



**Limited reliability-interpret with extreme caution

Knox County Schools Middle School Youth Risk Behavior Survey, 2013

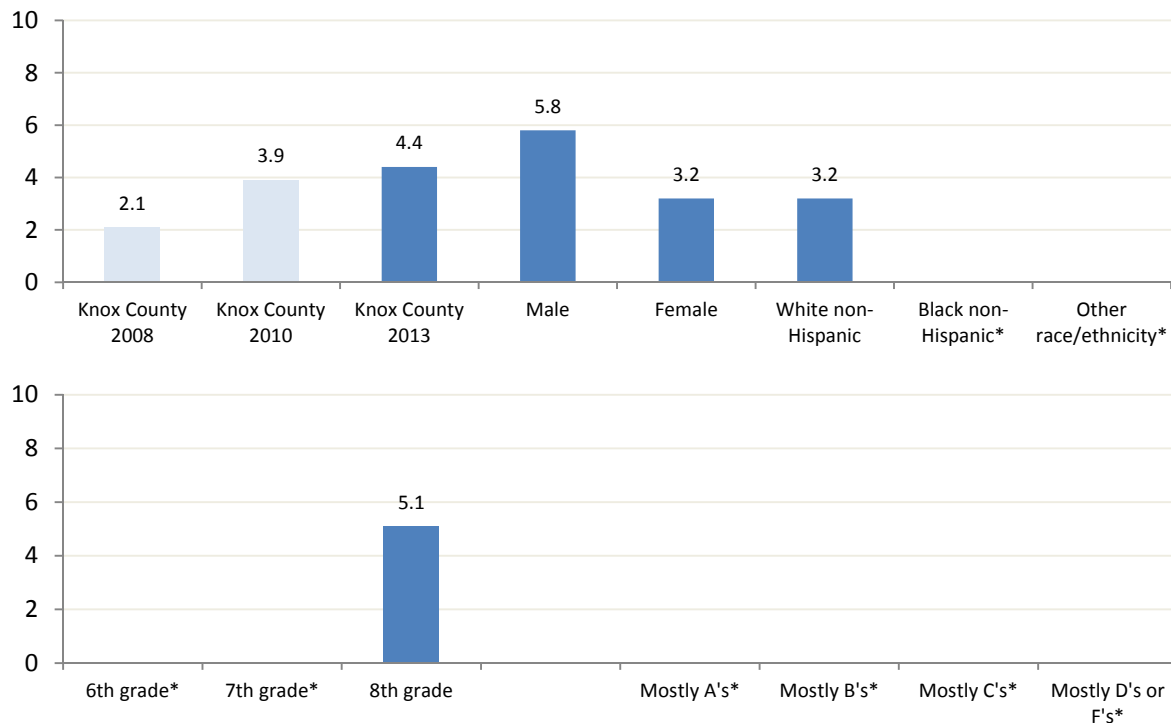
Table 25. Percentage of Knox County Schools middle school students who reported they had tried marijuana before they were 11 years of age, 2013

Total $n = 1,359$

	Sample n	Weighted n	Percentage	CI
Total	63	560	4.4	(3.4-5.6)
Male	39	341	5.8	(4.2-7.9)
Female	24	219	3.2	(2.1-4.8)
Race/Ethnicity				
White non-Hispanic	32	307	3.2	(2.3-4.5)
Black non-Hispanic	17	192	*	*
Other race/ethnicity	14	62	*	*
Grade in school				
6th grade	19	185	*	*
7th grade	18	164	*	*
8th grade	26	212	5.1	(3.4-7.7)
Estimated grades in past year				
Mostly A's	10	96	*	*
Mostly B's	13	117	*	*
Mostly C's	18	154	*	*
Mostly D's or F's	8	71	*	*

**Too unreliable to report*

Figure 25. Percentage of Knox County Schools middle school students who reported they had tried marijuana before they were 11 years of age, 2008, 2010, 2013; by gender, race/ethnicity, grade, and estimated school grades in the past year, 2013



**Too unreliable to report*

Table 26. Percentage of Knox County Schools middle school students who reported they had ever tried cocaine, 2013

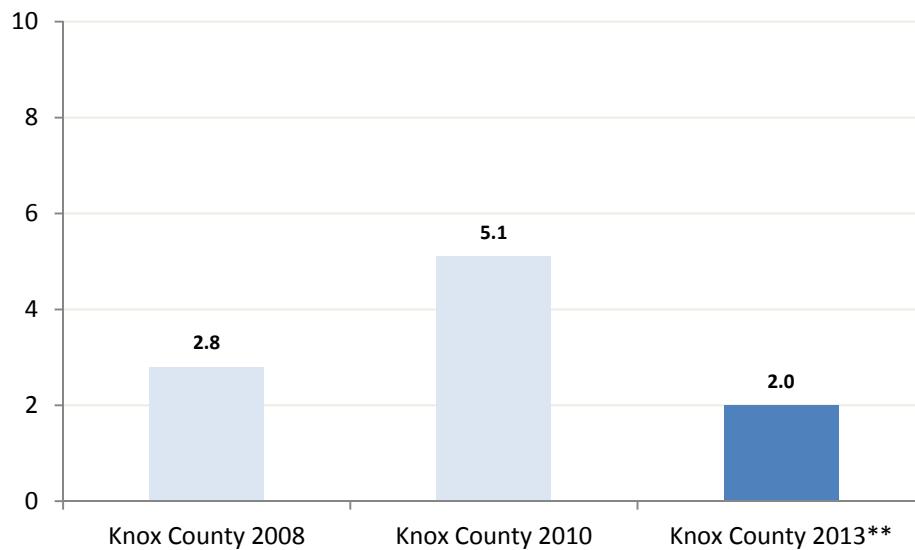
Total n = 1,380

	Sample n	Weighted n	Percentage	CI
Total	29	255	2.0**	(1.3-2.9)**
Male	14	109	*	*
Female	15	146	*	*
Race/Ethnicity				
White non-Hispanic	10	94	*	*
Black non-Hispanic	10	121	*	*
Other race/ethnicity	9	40	*	*
Grade in school				
6th grade	7	69	*	*
7th grade	10	102	*	*
8th grade	12	85	*	*
Estimated grades in past year				
Mostly A's	6	52	*	*
Mostly B's	5	26	*	*
Mostly C's	8	65	*	*
Mostly D's or F's	8	67	*	*

*Too unreliable to report

**Limited reliability-interpret with extreme caution

Figure 26. Percentage of Knox County Schools middle school students who reported they had ever tried cocaine, 2008, 2010, 2013



**Limited reliability-interpret with extreme caution

Knox County Schools Middle School Youth Risk Behavior Survey, 2013

Table 27. Percentage of Knox County Schools middle school students who reported they had ever used inhalants (spray cans, paints, or sprays) to get high, 2013

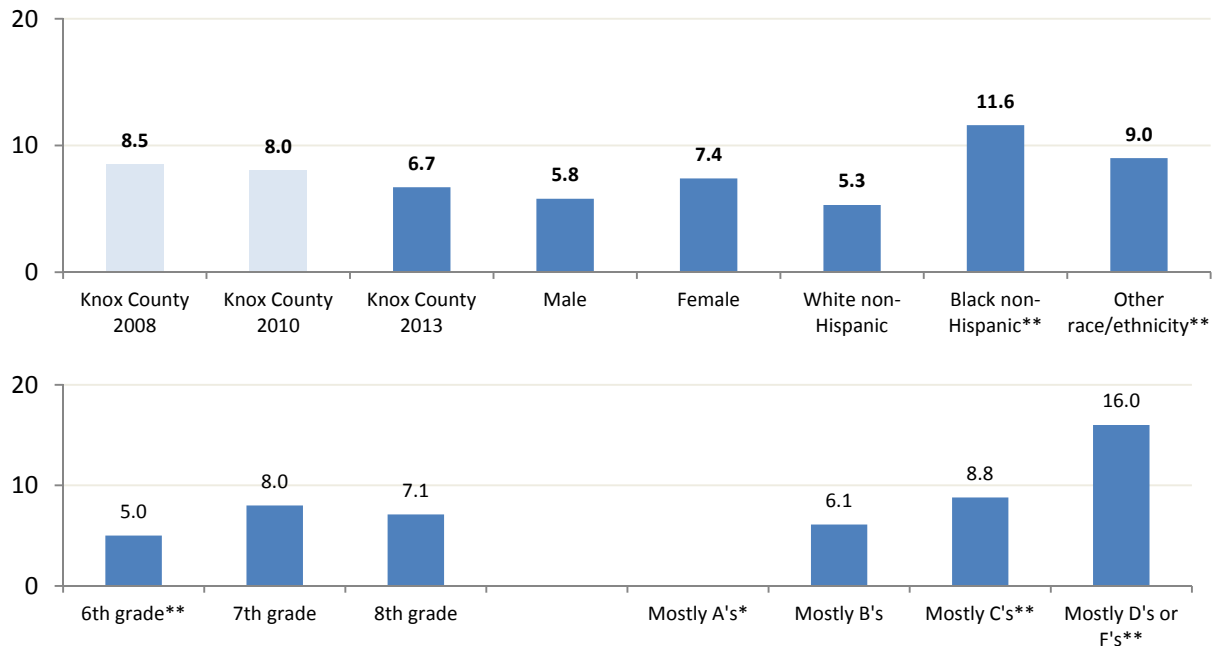
Total n = 1,370

	Sample n	Weighted n	Percentage	CI
Total	95	861	6.7	(5.4-8.2)
Male	42	346	5.8	(4.3-7.9)
Female	53	515	7.4	(5.6-9.7)
Race/Ethnicity				
White non-Hispanic	52	516	5.3	(4.1-7.0)
Black non-Hispanic	23	258	11.6**	(7.7-17.1)**
Other race/ethnicity	20	87	9.0**	(5.9-13.6)**
Grade in school				
6th grade	22	220	5.0**	(3.2-7.7)**
7th grade	34	342	8.0	(5.7-11.2)
8th grade	39	299	7.1	(5.2-9.6)
Estimated grades in past year				
Mostly A's	*	*	*	*
Mostly B's	26	258	6.1	(4.1-9.1)
Mostly C's	24	207	8.8**	(5.8-13.1)**
Mostly D's or F's	20	176	16.0**	(10.4-23.9)**

*Too unreliable to report

**Limited reliability-interpret with extreme caution

Figure 27. Percentage of Knox County Schools middle school students who reported they had ever used inhalants (spray cans, paints, or sprays) to get high, 2008, 2010, 2013, by gender, race/ethnicity, grade, and estimated school grades in the past year, 2013



*Too unreliable to report

**Limited reliability-interpret with extreme caution

Knox County Schools Middle School Youth Risk Behavior Survey, 2013

Table 28. Percentage of Knox County Schools middle school students who reported they had ever taken prescription drugs (such as Oxycontin, Percocet, Vicodin, codeine, Adderall, Ritalin, or Xanax) without a doctor's prescription, 2013

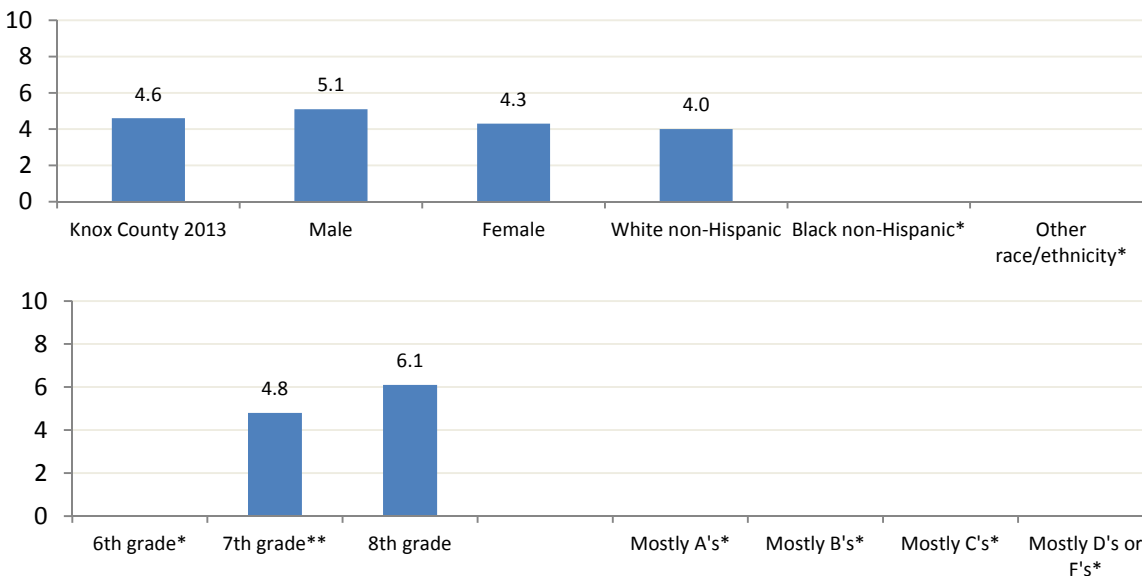
Total $n = 1,336$

	Sample n	Weighted n	Percentage	CI
Total	67	582	4.6	(3.6-5.9)
Male	35	293	5.1	(3.6-7.0)
Female	32	289	4.3	(3.0-6.1)
Race/Ethnicity				
White non-Hispanic	38	378	4.0	(2.9-5.4)
Black non-Hispanic	12	129	*	*
Other race/ethnicity	17	75	*	*
Grade in school				
6th grade	13	130	*	*
7th grade	22	202	4.8**	(3.1-7.4)**
8th grade	32	250	6.1	(4.3-8.5)
Estimated grades in past year				
Mostly A's	9	79	*	*
Mostly B's	19	173	*	*
Mostly C's	13	99	*	*
Mostly D's or F's	14	131	*	*

**Too unreliable to report*

***Limited reliability-interpret with extreme caution*

Figure 28. Percentage of Knox County Schools middle school students who reported they had ever taken prescription drugs (such as Oxycontin, Percocet, Vicodin, codeine, Adderall, Ritalin, or Xanax) without a doctor's prescription, 2013; by gender, race/ethnicity, grade, and estimated school grades in the past year, 2013



**Too unreliable to report*

***Limited reliability-interpret with extreme caution*

Section 5:
Weight control and diet

Knox County Schools Middle School Youth Risk Behavior Survey, 2013

Table 29. Percentage of Knox County Schools middle school students who describe their weight to be slightly overweight or overweight, 2013

Total $n = 1,361$

	Sample n	Weighted n	Percentage	CI
Total	327	3,067	24.0	(21.7-26.4)
Male	155	1,372	23.2	(20.1-26.7)
Female	172	1,695	24.6	(21.3-28.1)
Race/Ethnicity				
White non-Hispanic	236	2,374	24.7	(22.0-27.6)
Black non-Hispanic	35	447	20.0	(14.6-26.7)
Other race/ethnicity	56	246	25.7	(20.3-31.9)
Grade in school				
6th grade	86	914	21.2	(17.3-25.7)
7th grade	123	1,227	28.9	(24.6-33.6)
8th grade	118	926	21.9	(18.5-25.7)
Estimated grades in past year				
Mostly A's	85	807	20.9	(17.1-25.4)
Mostly B's	108	1,015	24.2	(20.3-28.7)
Mostly C's	63	543	23.1	(18.2-28.8)
Mostly D's or F's	34	328	29.9	(22.0-39.2)
Tobacco use				
Used tobacco in past 30 days	33	275	21.3	(15.4-28.9)
Did not use tobacco in past 30 days	294	2,792	24.3	(21.8-26.9)

Figure 29. Percentage of Knox County Schools middle school students who describe their weight to be slightly overweight or overweight, 2008, 2010, 2013; by gender, race/ethnicity, grade, and estimated school grades in the past year, 2013

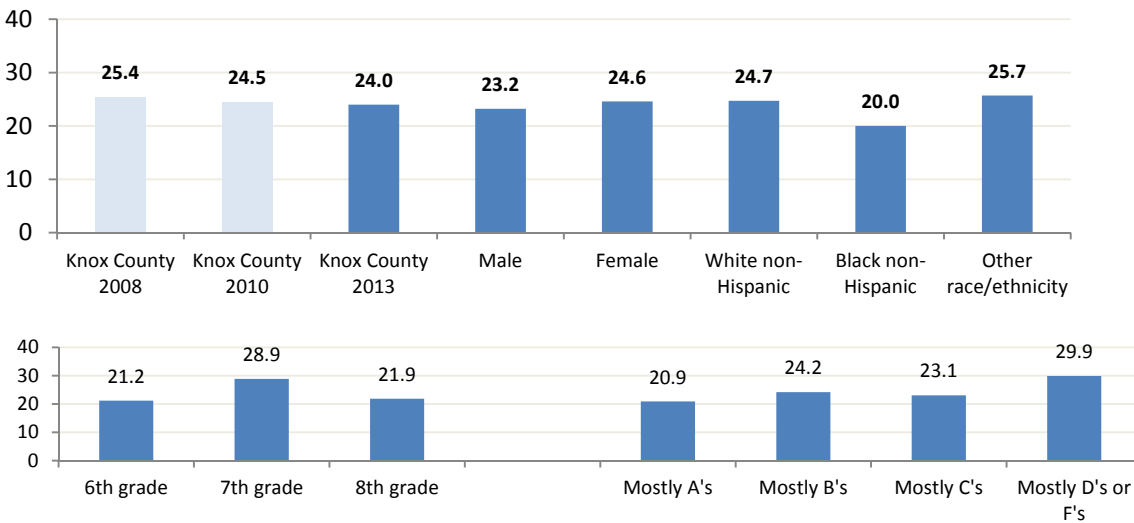
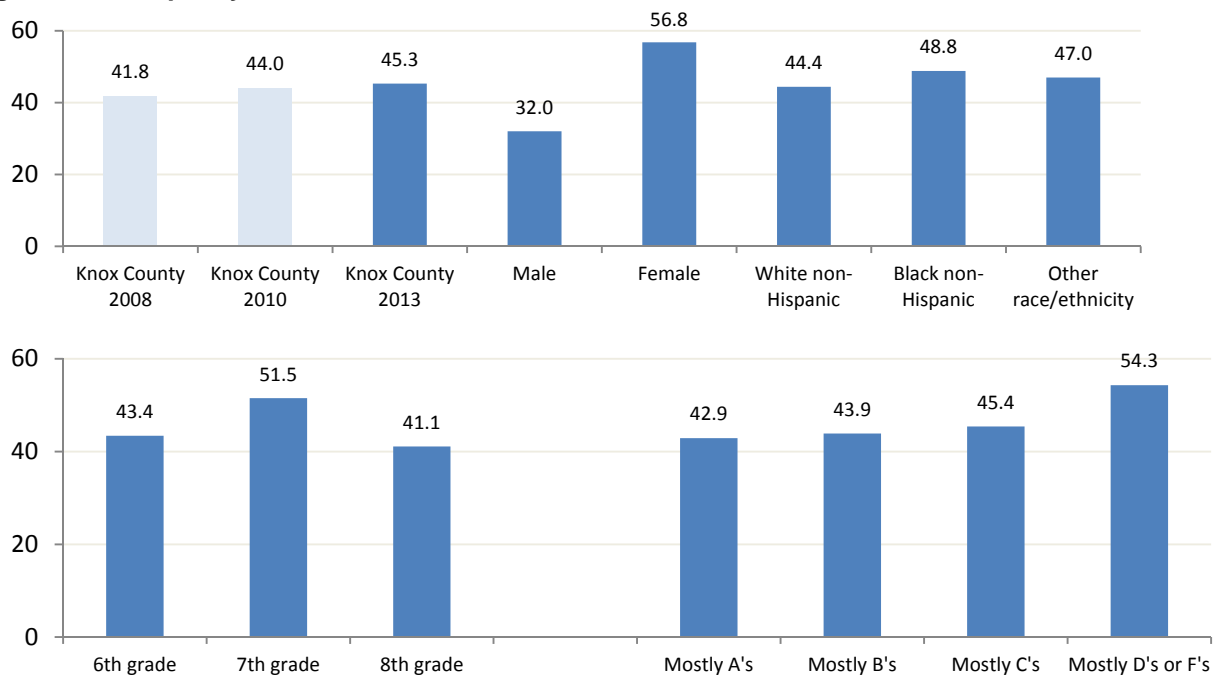


Table 30. Percentage of Knox County Schools middle school students who reported they were trying to lose weight, 2013

Total n = 1,360

	Sample n	Weighted n	Percentage	CI
Total	611	5,798	45.3	(42.6-48.1)
Male	218	1,884	32.0	(28.4-35.7)
Female	393	3,915	56.8	(52.8-60.7)
Race/Ethnicity				
White non-Hispanic	419	4,274	44.4	(41.2-47.6)
Black non-Hispanic	89	1,075	48.8	(41.5-56.2)
Other race/ethnicity	103	450	47.0	(40.4-53.6)
Grade in school				
6th grade	173	1,876	43.4	(38.4-48.6)
7th grade	214	2,191	51.5	(46.6-56.4)
8th grade	224	1,732	41.1	(36.9-45.4)
Estimated grades in past year				
Mostly A's	172	1,642	42.9	(37.9-48.0)
Mostly B's	194	1,839	43.9	(39.1-48.8)
Mostly C's	114	1,071	45.4	(39.1-51.9)
Mostly D's or F's	63	592	54.3	(45.0-63.3)

Figure 30. Percentage of Knox County Schools middle school students who reported they were trying to lose weight, 2008, 2010, 2013; by gender, race/ethnicity, grade, and estimated school grades in the past year, 2013



Knox County Schools Middle School Youth Risk Behavior Survey, 2013

Table 31. Percentage of Knox County Schools middle school students who reported they went without eating for 24 hours or more (fasted) to lose weight or keep from gaining weight, 2013

Total $n = 1,364$

	Sample n	Weighted n	Percentage	CI
Total	237	2,166	16.9	(14.9-19.0)
Male	80	666	11.3	(9.1-14.0)
Female	157	1,500	21.6	(18.5-24.9)
Race/Ethnicity				
White non-Hispanic	147	1,495	15.4	(13.3-17.9)
Black non-Hispanic	37	436	19.7	(14.5-26.3)
Other race/ethnicity	53	235	24.7	(19.4-30.9)
Grade in school				
6th grade	57	615	14.2	(11.0-18.2)
7th grade	89	867	20.3	(16.6-24.5)
8th grade	91	684	16.1	(13.2-19.5)
Estimated grades in past year				
Mostly A's	51	492	12.7	(9.7-16.5)
Mostly B's	68	622	14.8	(11.7-18.6)
Mostly C's	54	478	20.4	(15.7-26.1)
Mostly D's or F's	31	302	27.6	(19.9-36.8)

Figure 31. Percentage of Knox County Schools middle school students who reported they went without eating for 24 hours or more (fasted) to lose weight or keep from gaining weight, 2008, 2010, 2013; by gender, race/ethnicity, grade, and estimated school grades in the past year, 2013

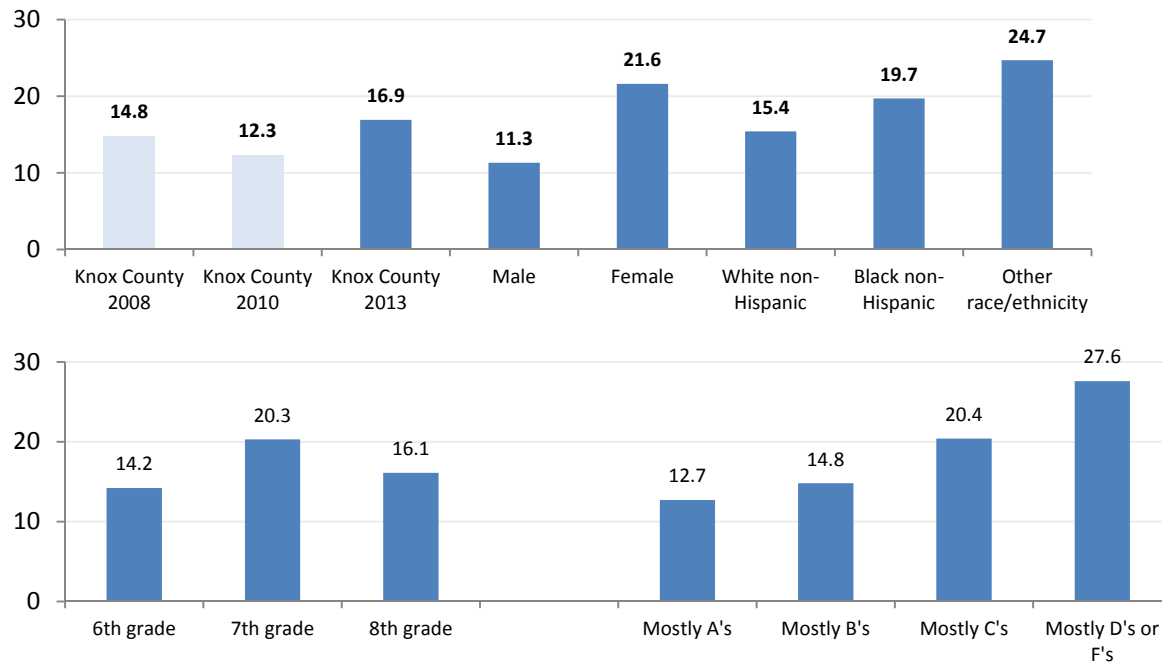


Table 32. Percentage of Knox County Schools middle school students who reported they had ever taken diet pills, powders, or liquids without a physician’s advice (excluding meal replacements) to lose weight or to keep from gaining weight, 2013

Total n = 1,365

	Sample n	Weighted n	Percentage	CI
Total	48	434	3.4	(2.5-4.5)
Male	17	142	*	*
Female	31	293	4.2	(2.9-6.0)
Race/Ethnicity				
White non-Hispanic	33	337	3.5	(2.5-4.9)
Black non-Hispanic	4	48	*	*
Other race/ethnicity	11	49	*	*
Grade in school				
6th grade	11	125	*	*
7th grade	20	182	4.2**	(2.7-6.6)**
8th grade	17	128	*	*
Estimated grades in past year				
Mostly A's	7	67	*	*
Mostly B's	12	119	*	*
Mostly C's	10	84	*	*
Mostly D's or F's	9	72	*	*

*Too unreliable to report

**Limited reliability-interpret with extreme caution

Figure 32. Percentage of Knox County Schools middle school students who reported they had ever taken diet pills, powders, or liquids without a physician’s advice (excluding meal replacements) to lose weight or to keep from gaining weight, 2008, 2010, 2013

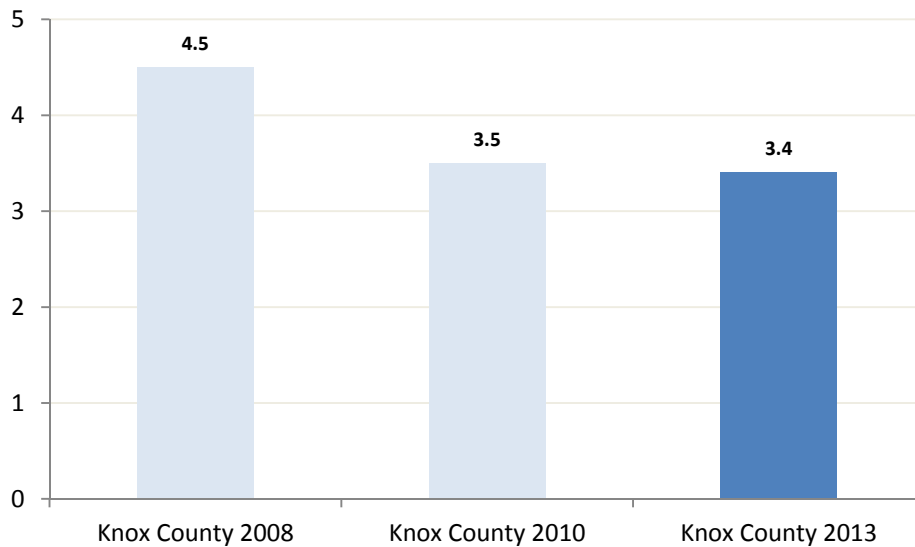


Table 33. Percentage of Knox County Schools middle school students who reported they had ever vomited or taken laxatives to lose weight or keep from gaining weight in their lifetime, 2013

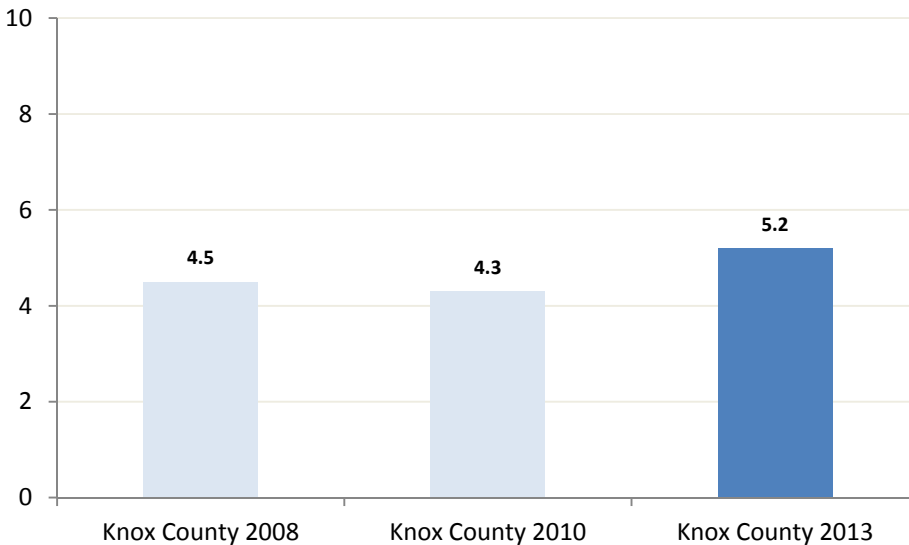
Total n = 1,327

	Sample n	Weighted n	Percentage	CI
Total	74	648	5.2	(4.1-6.6)
Male	19	156	*	*
Female	55	492	7.3	(5.5-9.5)
Race/Ethnicity				
White non-Hispanic	45	442	4.7	(3.5-6.3)
Black non-Hispanic	14	127	*	*
Other race/ethnicity	18	79	*	*
Grade in school				
6th grade	16	176	*	*
7th grade	25	238	5.7**	(3.8-8.4)**
8th grade	33	233	5.6	(4.0-7.9)
Estimated grades in past year				
Mostly A's	13	121	*	*
Mostly B's	18	152	*	*
Mostly C's	16	129	*	*
Mostly D's or F's	17	164	*	*

*Too unreliable to report

**Limited reliability-interpret with extreme caution

Figure 33. Percentage of Knox County Schools middle school students who reported they had ever vomited or taken laxatives to lose weight or to keep from gaining weight, 2008, 2010, 2013



Knox County Schools Middle School Youth Risk Behavior Survey, 2013

Table 34. Percentage of Knox County Schools middle school students who reported their doctor or nurse discussed weight control with them at their last checkup, 2013

Total $n = 1,326$

	Sample n	Weighted n	Percentage	CI
Total	348	3,249	26.1	(23.7-28.6)
Male	164	1,410	24.4	(21.2-27.9)
Female	184	1,839	27.5	(24.0-31.2)
Race/Ethnicity				
White non-Hispanic	230	2,326	24.6	(21.9-27.5)
Black non-Hispanic	55	643	30.7	(24.2-38.1)
Other race/ethnicity	63	280	30.0	(24.2-36.6)
Grade in school				
6th grade	90	963	22.9	(18.8-27.6)
7th grade	123	1,200	28.4	(24.1-33.0)
8th grade	135	1,086	26.9	(23.1-31.0)
Estimated grades in past year				
Mostly A's	106	1,002	26.8	(22.5-31.6)
Mostly B's	108	1,042	25.7	(21.5-30.3)
Mostly C's	67	598	26.0	(20.7-32.1)
Mostly D's or F's	33	309	28.3	(20.6-37.4)

Figure 34. Percentage of Knox County Schools middle school students who reported their doctor or nurse discussed weight control with them at their last checkup by gender, race/ethnicity, grade, and estimated school grades in the past, 2013

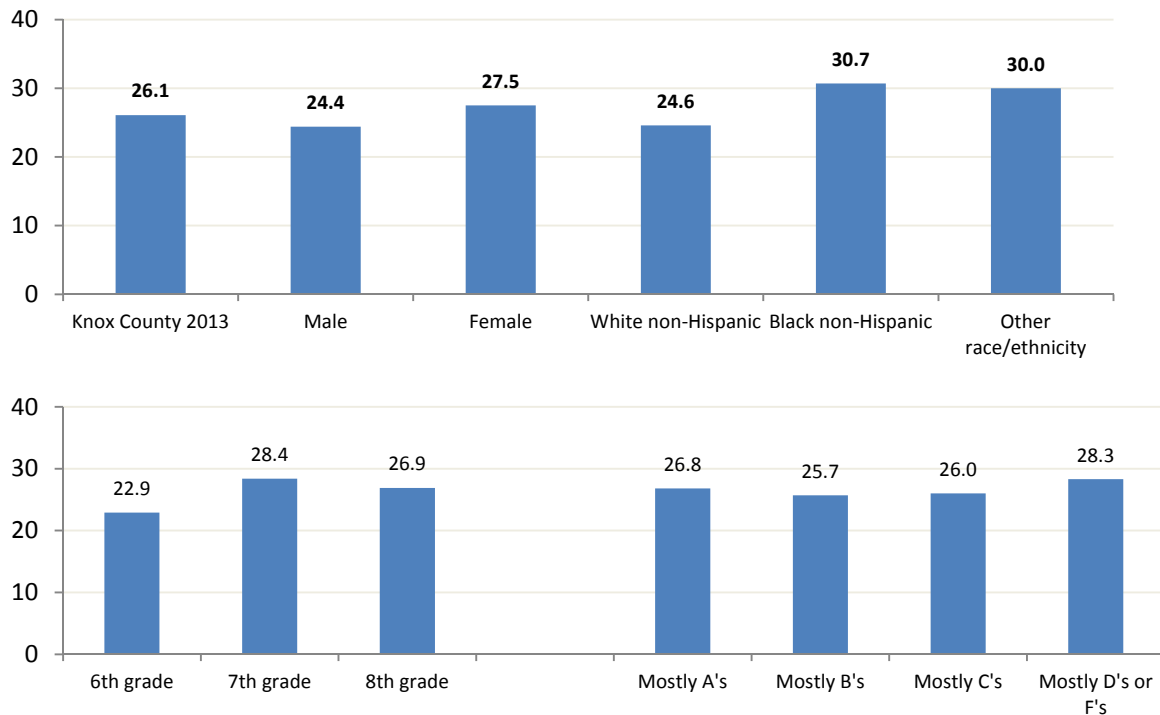


Table 35. The number of days Knox County Middle School Students ate breakfast during the seven days before the survey by percentage, 2013

Total $n = 1,362$

	Sample n	Weighted n	Percentage	CI
0 Days	148	1,352	10.6	(9.0-12.4)
1 Days	71	643	5.0	(4.0-6.4)
2 Days	89	845	6.6	(5.3-8.1)
3 Days	77	729	5.7	(4.5-7.1)
4 Days	92	853	6.7	(5.4-8.2)
5 Days	110	1,062	8.3	(6.9-10.0)
6 Days	99	954	7.5	(6.1-9.1)
7 Days	676	6,364	49.7	(46.9-52.5)

Figure 35. The number of days Knox County Middle School Students ate breakfast during the seven days before the survey by percentage, 2013

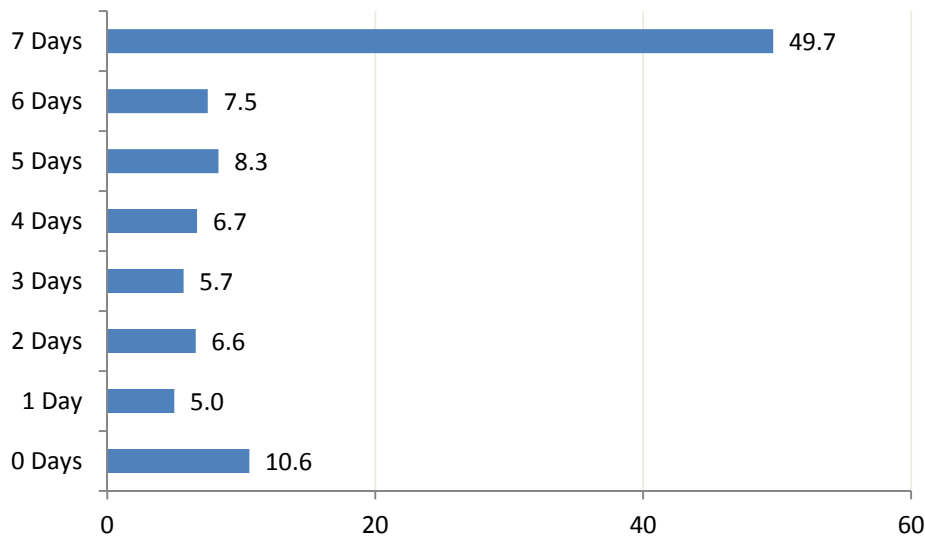
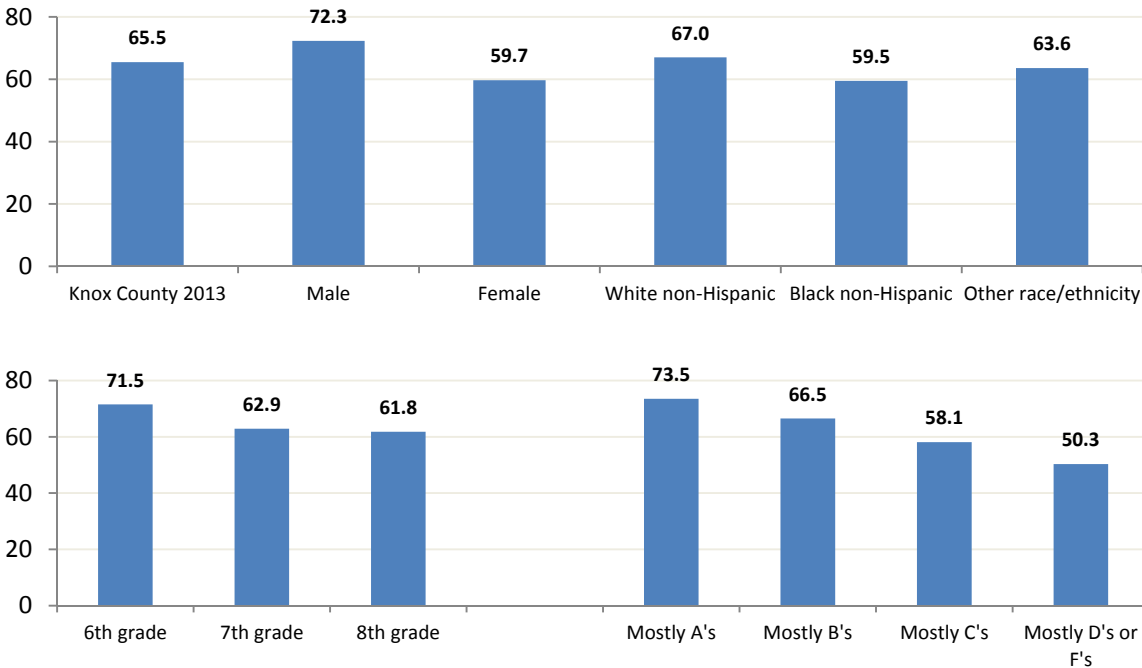


Table 36. Percentage of Knox County Schools middle school students who reported they ate breakfast five or more times during the past seven days, 2013

Total n = 1,362

	Sample n	Weighted n	Percentage	CI
Total	885	8,380	65.5	(62.8-68.0)
Male	477	4,243	72.3	(68.6-75.6)
Female	408	4,138	59.7	(55.8-63.5)
Race/Ethnicity				
White non-Hispanic	635	6,460	67.0	(63.9-70.0)
Black non-Hispanic	109	1,305	59.5	(52.2-66.5)
Other race/ethnicity	141	615	63.6	(57.1-69.7)
Grade in school				
6th grade	295	3,122	71.5	(66.6-75.9)
7th grade	266	2,663	62.9	(58.0-67.5)
8th grade	324	2,595	61.8	(57.5-65.9)
Estimated grades in past year				
Mostly A's	298	2,840	73.5	(68.8-77.7)
Mostly B's	292	2,784	66.5	(61.7-70.9)
Mostly C's	144	1,360	58.1	(51.6-64.3)
Mostly D's or F's	63	547	50.3	(41.0-59.5)

Figure 36. Percentage of Knox County Schools middle school students who reported they ate breakfast five or more times during the past seven days by gender, race/ethnicity, grade, and estimated school grades in the past year, 2013



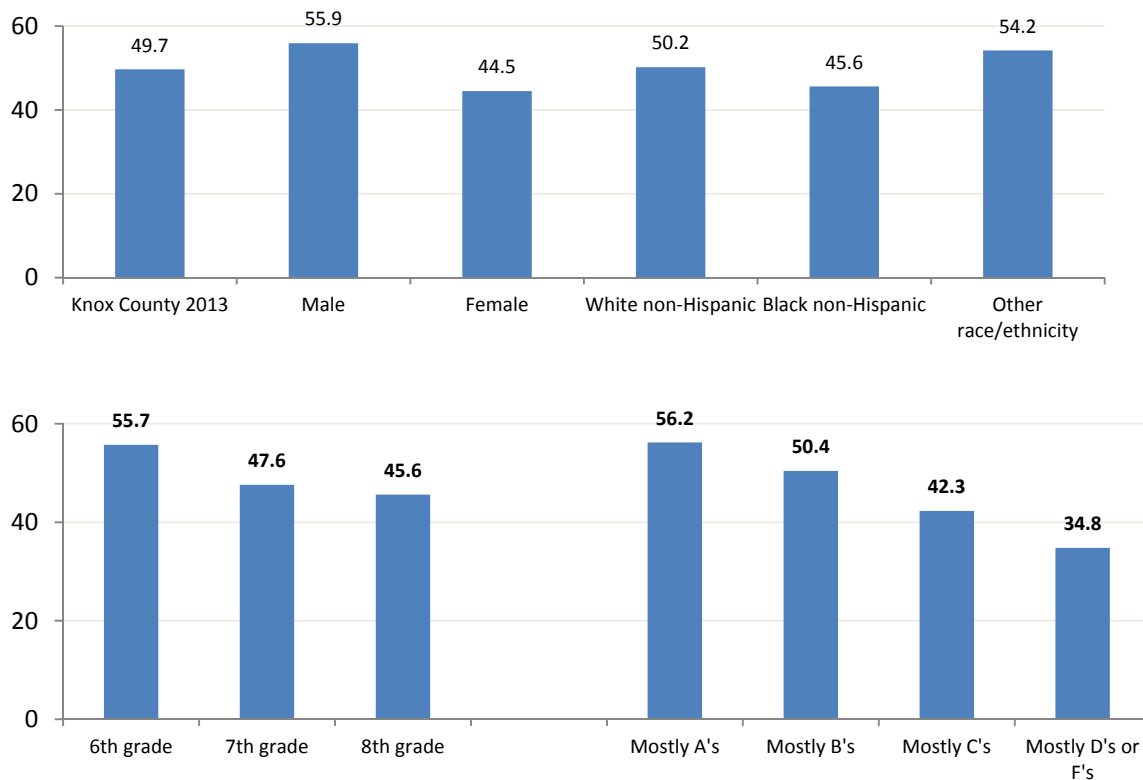
Knox County Schools Middle School Youth Risk Behavior Survey, 2013

Table 37. Percentage of Knox County Schools middle school students who reported they ate breakfast seven times during the past seven days, 2013

Total $n = 1,362$

	Sample n	Weighted n	Percentage	CI
Total	676	6,364	49.7	(46.9-52.5)
Male	371	3,280	55.9	(51.9-59.7)
Female	305	3,085	44.5	(40.6-48.4)
Race/Ethnicity				
White non-Hispanic	474	4,839	50.2	(47.0-53.4)
Black non-Hispanic	82	1,001	45.6	(38.4-53.0)
Other race/ethnicity	120	524	54.2	(47.6-60.7)
Grade in school				
6th grade	232	2,433	55.7	(50.6-60.7)
7th grade	204	2,016	47.6	(42.7-52.5)
8th grade	240	1,915	45.6	(41.3-50.0)
Estimated grades in past year				
Mostly A's	230	2,173	56.2	(51.2-61.2)
Mostly B's	222	2,112	50.4	(45.6-55.3)
Mostly C's	106	991	42.3	(36.1-48.8)
Mostly D's or F's	45	378	34.8	(26.6-43.9)

Figure 37. Percentage of Knox County Schools middle school students who reported they ate breakfast seven times during the past seven days by gender, race/ethnicity, grade, and estimated school grades in the past year, 2013



Knox County Schools Middle School Youth Risk Behavior Survey, 2013

Table 38. Percentage of Knox County Schools middle school students who reported they went hungry 'most of the time', or 'always', due to a lack of food in their house during the past 30 days, 2013

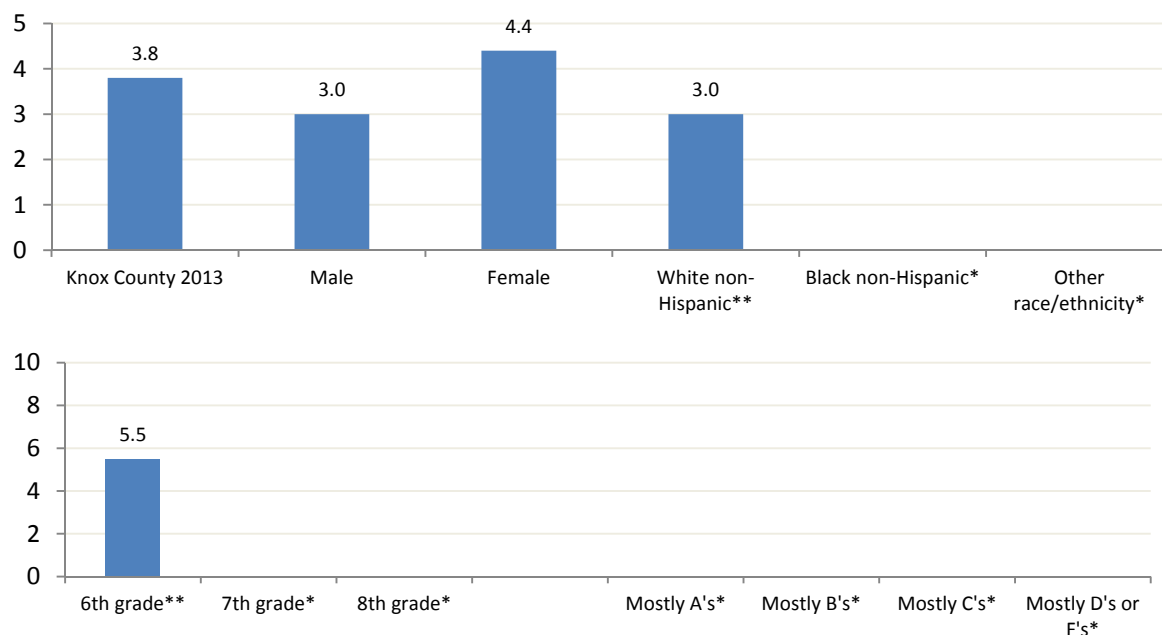
Total $n = 1,330$

	Sample n	Weighted n	Percentage	CI
Total	50	469	3.8	(2.8-5.0)
Male	21	174	3.0**	(1.9-4.7)**
Female	29	296	4.4**	(3.0-6.4)**
Race/Ethnicity				
White non-Hispanic	26	281	3.0**	(2.0-4.4)**
Black non-Hispanic	11	128	*	*
Other race/ethnicity	13	60	*	*
Grade in school				
6th grade	20	231	5.5**	(3.5-8.5)**
7th grade	16	128	*	*
8th grade	14	110	*	*
Estimated grades in past year				
Mostly A's	7	57	*	*
Mostly B's	7	66	*	*
Mostly C's	13	131	*	*
Mostly D's or F's	14	128	*	*

*Too unreliable to report

**Limited reliability-interpret with extreme caution

Figure 38. Percentage of Knox County Schools middle school students who reported they went hungry 'most of the time,' or 'always,' due to a lack of food in their house during the past 30 days by gender, race/ethnicity, grade, and estimated school grades in the past year, 2013



*Too unreliable to report

**Limited reliability-interpret with extreme caution

Section 6:

Physical activity

Knox County Schools Middle School Youth Risk Behavior Survey, 2013

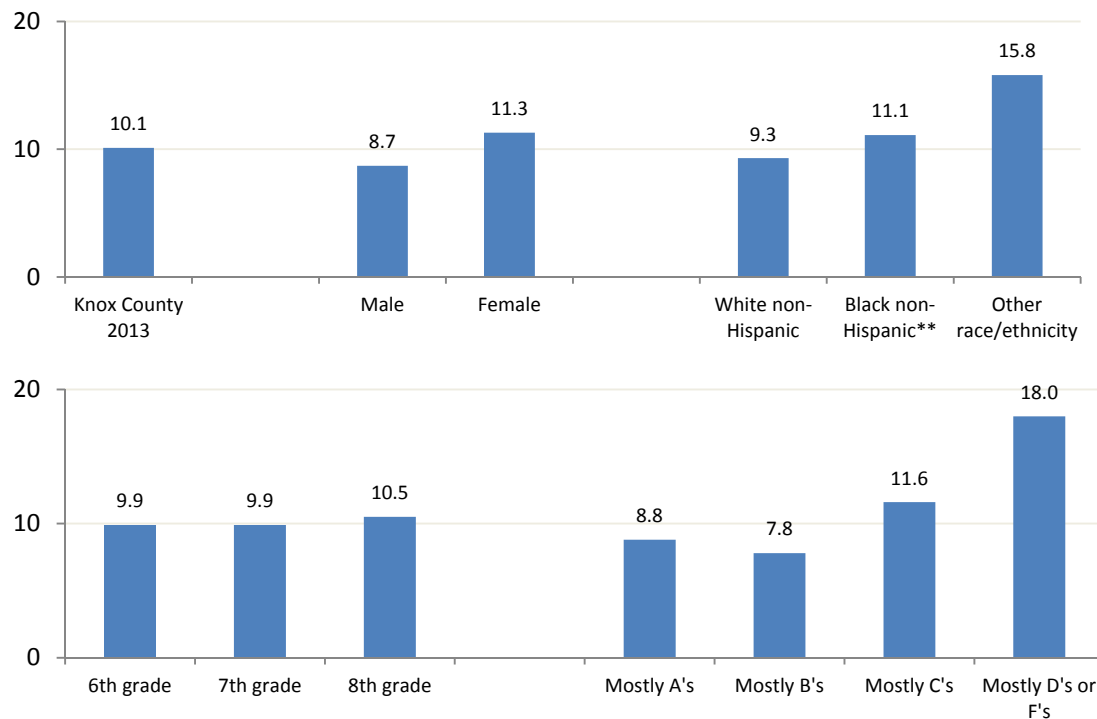
Table 39. Percentage of Knox County Schools middle schools students who reported they did not participate in a physical activity of at least sixty minutes during the past seven days, 2013

Total $n = 1,362$

	Sample n	Weighted n	Percentage	CI
Total	147	1,293	10.1	(8.6-11.9)
Male	62	509	8.7	(6.8-11.1)
Female	85	784	11.3	(9.1-13.9)
Race/Ethnicity				
White non-Hispanic	90	894	9.3	(7.6-11.3)
Black non-Hispanic	22	247	11.1**	(7.3-16.6)**
Other race/ethnicity	35	153	15.8	(11.5-21.2)
Grade in school				
6th grade	44	430	9.9	(7.3-13.4)
7th grade	44	422	9.9	(7.3-13.2)
8th grade	59	441	10.5	(8.2-13.4)
Estimated grades in past year				
Mostly A's	38	340	8.8	(6.3-12.0)
Mostly B's	35	325	7.8	(5.6-10.9)
Mostly C's	32	275	11.6	(8.2-16.3)
Mostly D's or F's	24	197	18.0	(12.1-25.9)

**Limited reliability-interpret with extreme caution

Figure 39. Percentage of Knox County Schools middle schools students who reported they did not participate in a physical activity of at least sixty minutes during the past seven days by gender, race/ethnicity, grade, and estimated school grades in the past year, 2013



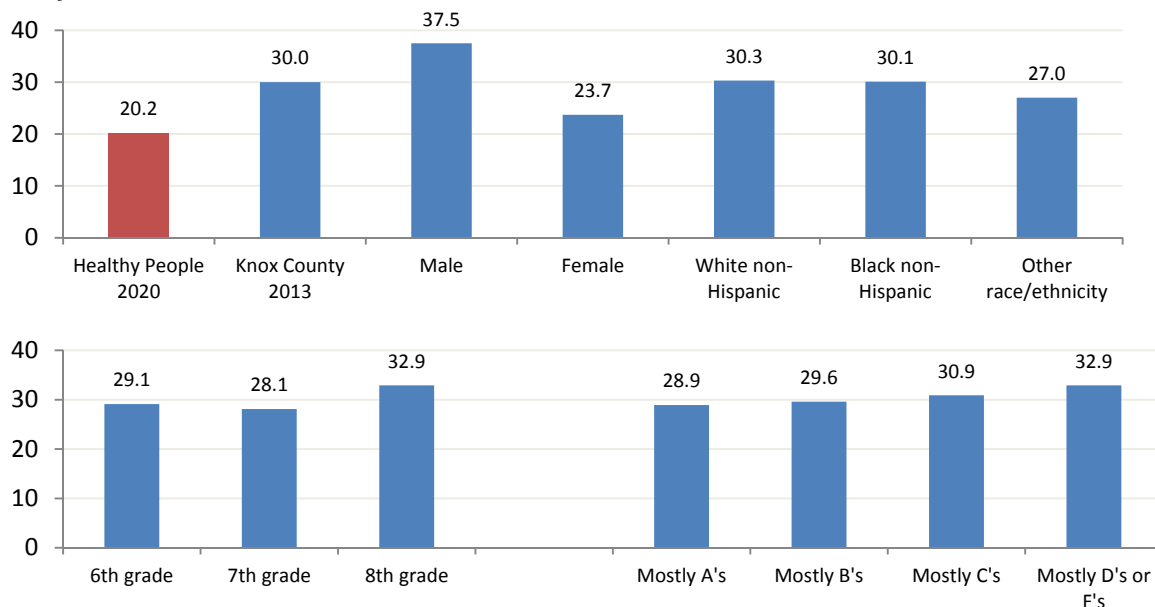
**Limited reliability-interpret with extreme caution

Table 40. Percentage of Knox County Schools middle school students who reported they participated in a physical activity for least sixty minutes every day during the past seven days, 2013

Total n = 1,362

	Sample n	Weighted n	Percentage	CI
Total	410	3,846	30.0	(27.6-32.6)
Male	247	2,192	37.5	(33.8-41.4)
Female	163	1,654	23.7	(20.5-27.3)
Race/Ethnicity				
White non-Hispanic	292	2,919	30.3	(27.5-33.4)
Black non-Hispanic	58	667	30.1	(23.9-37.2)
Other race/ethnicity	60	261	27.0	(21.5-33.2)
Grade in school				
6th grade	120	1,260	29.1	(24.7-33.9)
7th grade	122	1,202	28.1	(23.9-32.8)
8th grade	168	1,385	32.9	(29.0-37.2)
Estimated grades in past year				
Mostly A's	118	1,120	28.9	(24.6-33.7)
Mostly B's	129	1,234	29.6	(25.3-34.3)
Mostly C's	79	731	30.9	(25.3-37.2)
Mostly D's or F's	40	360	32.9	(24.8-42.1)

Figure 40. Percentage of Knox County Schools middle school students who reported they participated in a physical activity for least sixty minutes every day during the past seven days by Healthy People 2020 objective, gender, race/ethnicity, grade, and estimated school grades in the past year, 2013



NOTE: Healthy People 2020 Objective PA-3 calls for an increase in the proportion of adolescents meeting Federal physical activity guidelines (60 minutes of exercise a day) to 20.2%. This objective has been met in 2013.

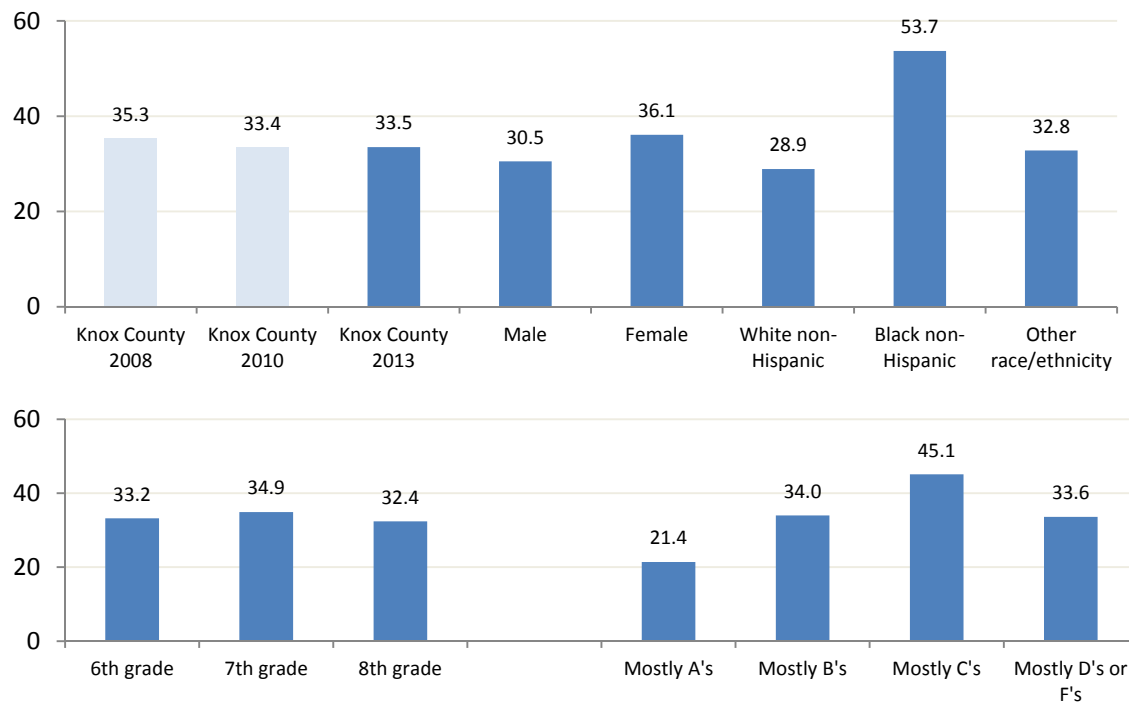
Knox County Schools Middle School Youth Risk Behavior Survey, 2013

Table 41. Percentage of Knox County Schools middle school students who reported they watch three or more hours of television on an average school day, 2013

Total $n = 1,364$

	Sample n	Weighted n	Percentage	CI
Total	446	4,302	33.5	(30.9-36.2)
Male	206	1,789	30.5	(27.0-34.2)
Female	240	2,513	36.1	(32.4-39.9)
Race/Ethnicity				
White non-Hispanic	276	2,793	28.9	(26.1-31.9)
Black non-Hispanic	98	1,195	53.7	(46.4-60.9)
Other race/ethnicity	72	314	32.8	(26.9-39.3)
Grade in school				
6th grade	133	1,453	33.2	(28.6-38.2)
7th grade	142	1,486	34.9	(30.3-39.7)
8th grade	171	1,363	32.4	(28.5-36.6)
Estimated grades in past year				
Mostly A's	85	823	21.4	(17.4-25.9)
Mostly B's	145	1,418	34.0	(29.5-38.8)
Mostly C's	114	1,072	45.1	(38.8-51.5)
Mostly D's or F's	41	371	33.6	(25.4-42.9)

Figure 41. Percentage of Knox County Schools middle school students who reported they watch three or more hours of television on an average school day, 2008, 2010, 2013; by gender, race/ethnicity, grade, and estimated school grades in the past year, 2013



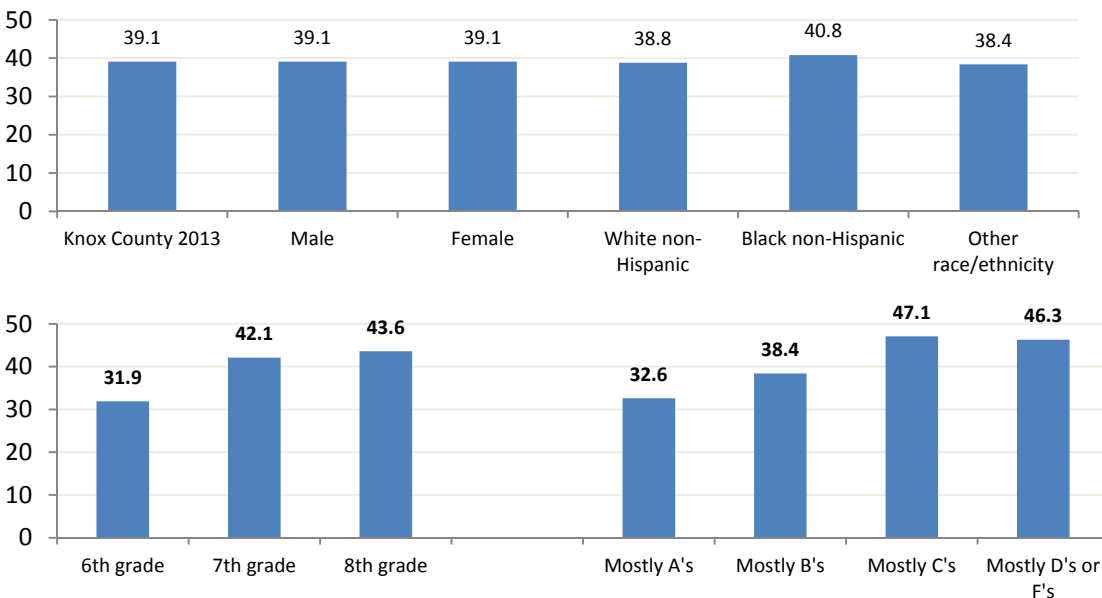
Knox County Schools Middle School Youth Risk Behavior Survey, 2013

Table 42. Percentage of Knox County Schools middle school students who reported they play video or computer games or use a computer for something other than school work for three or more hours on an average school day, 2013—Includes time spent with Xbox, Playstation, an Ipod, an Ipad or other tablet, Smartphones, Youtube, Facebook or other social networking tools, and the Internet.

Total $n = 1,357$

	Sample n	Weighted n	Percentage	CI
Total	539	4,988	39.1	(36.4-41.9)
Male	266	2,281	39.1	(35.4-43.0)
Female	273	2,707	39.1	(35.4-43.0)
Race/Ethnicity				
White non-Hispanic	379	3,736	38.8	(35.7-42.0)
Black non-Hispanic	75	883	40.8	(33.7-48.3)
Other race/ethnicity	85	369	38.4	(32.2-45.0)
Grade in school				
6th grade	133	1,379	31.9	(27.3-36.8)
7th grade	176	1,785	42.1	(37.3-47.0)
8th grade	230	1,824	43.6	(39.4-48.0)
Estimated grades in past year				
Mostly A's	135	1,249	32.6	(28.0-37.5)
Mostly B's	171	1,596	38.4	(33.7-43.2)
Mostly C's	120	1,116	47.1	(40.7-53.5)
Mostly D's or F's	57	499	46.3	(37.2-55.6)

Figure 42. Percentage of Knox County Schools middle school students who reported they play video or computer games or use a computer for something other than school work for three or more hours on an average school day by gender, race/ethnicity, grade, and estimated school grades in the past year, 2013—Includes time spent with Xbox, Playstation, an Ipod, an Ipad or other tablet, Smartphones, Youtube, Facebook or other social networking tools, and the Internet.



Knox County Schools Middle School Youth Risk Behavior Survey, 2013

Table 43. Percentage of Knox County Schools middle school students who reported they attended a PE class every day (5 days) in an average school week, 2013

Total $n = 1,346$

	Sample n	Weighted n	Percentage	CI
Total	442	4,159	32.9	(30.5-35.4)
Male	233	2,082	36.0	(32.4-39.7)
Female	209	2,078	30.3	(26.9-33.9)
Race/Ethnicity				
White non-Hispanic	320	3,197	33.7	(30.9-36.6)
Black non-Hispanic	56	671	30.5	(24.2-37.6)
Other race/ethnicity	66	292	30.6	(24.9-37.0)
Grade in school				
6th grade	112	1,191	28.0	(23.7-32.8)
7th grade	156	1,569	37.0	(32.4-41.7)
8th grade	174	1,399	33.7	(29.9-37.8)
Estimated grades in past year				
Mostly A's	141	1,321	34.6	(30.1-39.5)
Mostly B's	149	1,437	35.3	(30.8-40.0)
Mostly C's	74	695	29.8	(24.2-36.0)
Mostly D's or F's	36	314	28.9	(21.5-37.7)

Figure 43. Percentage of Knox County Schools middle school students who reported they attended a PE class every day (5 days) in an average school week, 2008, 2010, 2013; by gender, race/ethnicity, grade, and estimated school grades in the past year, 2013

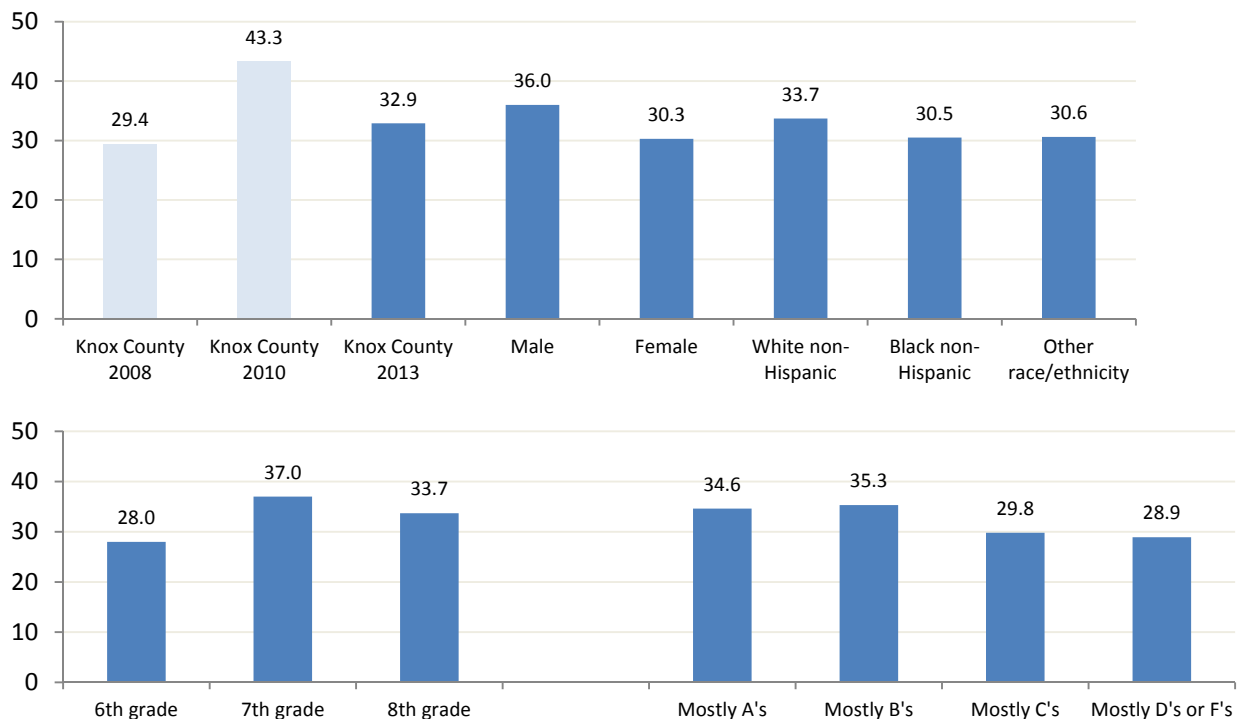
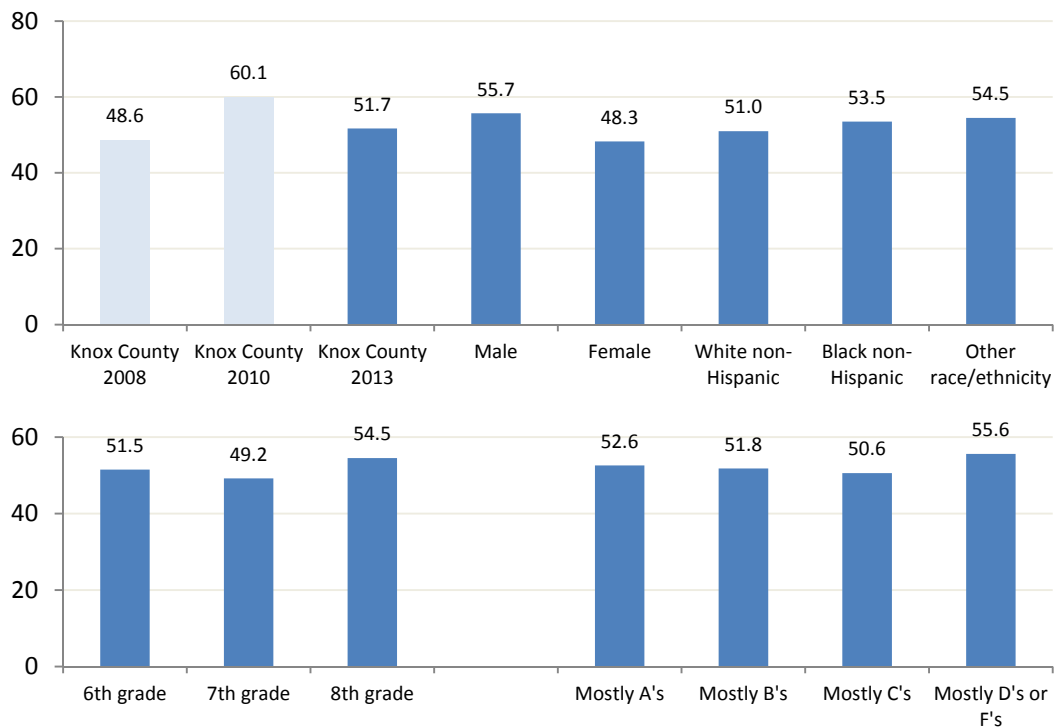


Table 44. Percentage of Knox County Schools middle school students who reported they attended PE class on one or more days during the past week, 2013

Total *n* = 1,346

	Sample n	Weighted n	Percentage	CI
Total	700	6,536	51.7	(48.9-54.4)
Male	367	3,221	55.7	(51.7-59.5)
Female	333	3,315	48.3	(44.4-52.3)
Race/Ethnicity				
White non-Hispanic	480	4,841	51.0	(47.8-54.2)
Black non-Hispanic	101	1,177	53.5	(46.0-60.7)
Other race/ethnicity	119	519	54.5	(47.8-61.0)
Grade in school				
6th grade	208	2,188	51.5	(46.3-56.5)
7th grade	209	2,089	49.2	(44.4-54.1)
8th grade	283	283	54.5	(50.1-58.7)
Estimated grades in past year				
Mostly A's	209	2,007	52.6	(47.5-57.6)
Mostly B's	226	2,109	51.8	(46.9-56.6)
Mostly C's	128	1,182	50.6	(44.1-57.1)
Mostly D's or F's	70	604	55.6	(46.2-64.6)

Figure 44. Percentage of Knox County Schools middle school students who reported they attended PE class on one or more days during the past week, 2008, 2010, 2013; by gender, race/ethnicity, grade, and estimated school grades in the past year, 2013



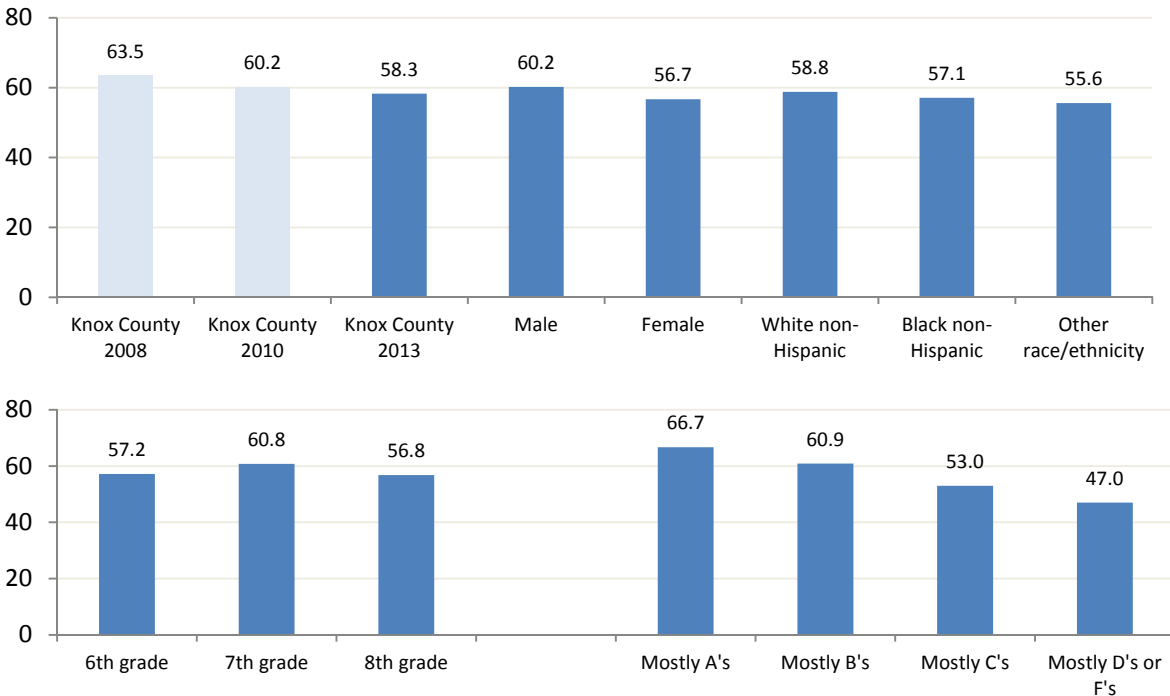
Knox County Schools Middle School Youth Risk Behavior Survey, 2013

Table 45. Percentage of Knox County Schools middle school students who reported they played on one or more sports teams during the past 12 months, 2013

Total *n* = 1,352

	Sample n	Weighted n	Percentage	CI
Total	785	7,413	58.3	(55.5-61.0)
Male	395	395	60.2	(56.3-64.0)
Female	390	390	56.7	(52.8-60.5)
Race/Ethnicity				
White non-Hispanic	556	5,629	58.8	(55.6-62.0)
Black non-Hispanic	107	1,251	57.1	(49.7-64.2)
Other race/ethnicity	122	533	55.6	(48.9-62.1)
Grade in school				
6th grade	235	2,460	57.2	(52.1-62.2)
7th grade	257	2,595	60.8	(56.0-65.5)
8th grade	293	2,358	56.8	(52.5-61.1)
Estimated grades in past year				
Mostly A's	271	2,561	66.7	(61.8-71.3)
Mostly B's	263	2,512	60.9	(56.0-65.6)
Mostly C's	133	1,231	53.0	(46.5-59.4)
Mostly D's or F's	57	513	47.0	(37.9-56.4)

Figure 45. Percentage of Knox County Schools middle school students who reported they played on one or more sports teams during the past 12 months, 2008, 2010, 2013; by gender, race/ethnicity, grade, and estimated school grades in the past year, 2013



Section 7:
Additional health-related topics

Table 46. Percentage of Knox County Schools middle school students who reported they had ever been told by a doctor or a nurse they have asthma, 2013

Total n = 1,337

	Sample n	Weighted n	Percentage	CI
Total	251	2,299	18.2	(16.2-20.5)
Male	129	1,129	19.7	(16.7-23.0)
Female	122	1,170	17.0	(14.3-20.2)
Race/Ethnicity				
White non-Hispanic	164	1,622	17.0	(14.7-19.6)
Black non-Hispanic	43	484	22.4	(16.8-29.1)
Other race/ethnicity	44	193	21.0	(16.0-27.1)
Grade in school				
6th grade	63	662	15.4	(12.0-19.6)
7th grade	81	786	18.7	(15.2-22.9)
8th grade	107	851	20.7	(17.3-24.5)
Estimated grades in past year				
Mostly A's	66	593	15.5	(12.2-19.5)
Mostly B's	67	646	15.7	(12.5-19.7)
Mostly C's	53	481	20.9	(16.1-26.7)
Mostly D's or F's	37	327	30.2	(22.4-39.4)

Figure 46. Percentage of Knox County Schools middle school students who reported they had ever been told by a doctor or a nurse they have asthma, 2008, 2013; by gender, race/ethnicity, grade, and estimated school grades in the past year, 2013

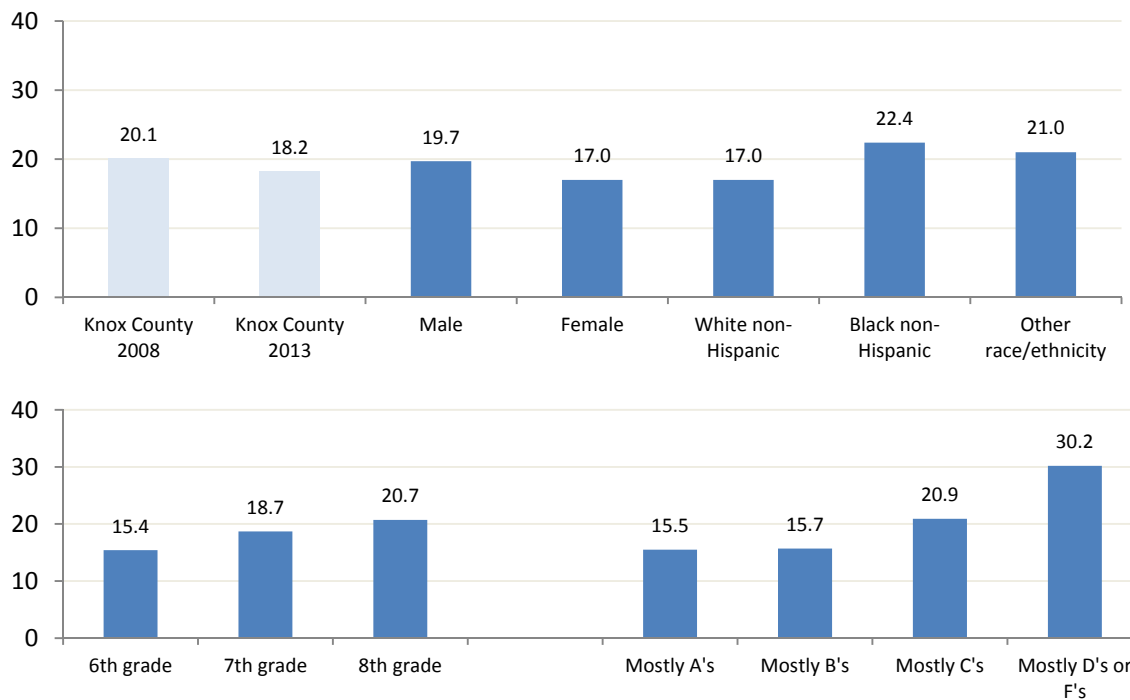


Table 47. Percentage of Knox County Schools middle school students who reported they currently have asthma, 2013

Total $n = 1,345$

	Sample n	Weighted n	Percentage	CI
Total	192	1,755	13.9	(12.1-15.9)
Male	96	830	14.3	(11.8-17.3)
Female	96	925	13.5	(11.0-16.4)
Race/Ethnicity				
White non-Hispanic	114	1,145	12.0	(10.0-14.3)
Black non-Hispanic	39	439	20.4	(15.1-26.9)
Other race/ethnicity	39	171	18.1	(13.5-23.8)
Grade in school				
6th grade	55	563	13.2	(10.1-17.1)
7th grade	63	611	14.5	(11.3-18.3)
8th grade	74	581	13.9	(11.2-17.2)
Estimated grades in past year				
Mostly A's	44	391	10.2	(7.5-13.6)
Mostly B's	55	520	12.6	(9.7-16.3)
Mostly C's	47	443	18.8	(14.3-24.5)
Mostly D's or F's	25	211	20.0	(13.5-28.6)

Figure 47. Percentage of Knox County Schools middle school students who reported they currently have asthma, 2008, 2013; by gender, race/ethnicity, grade, and estimated school grades in the past year, 2013

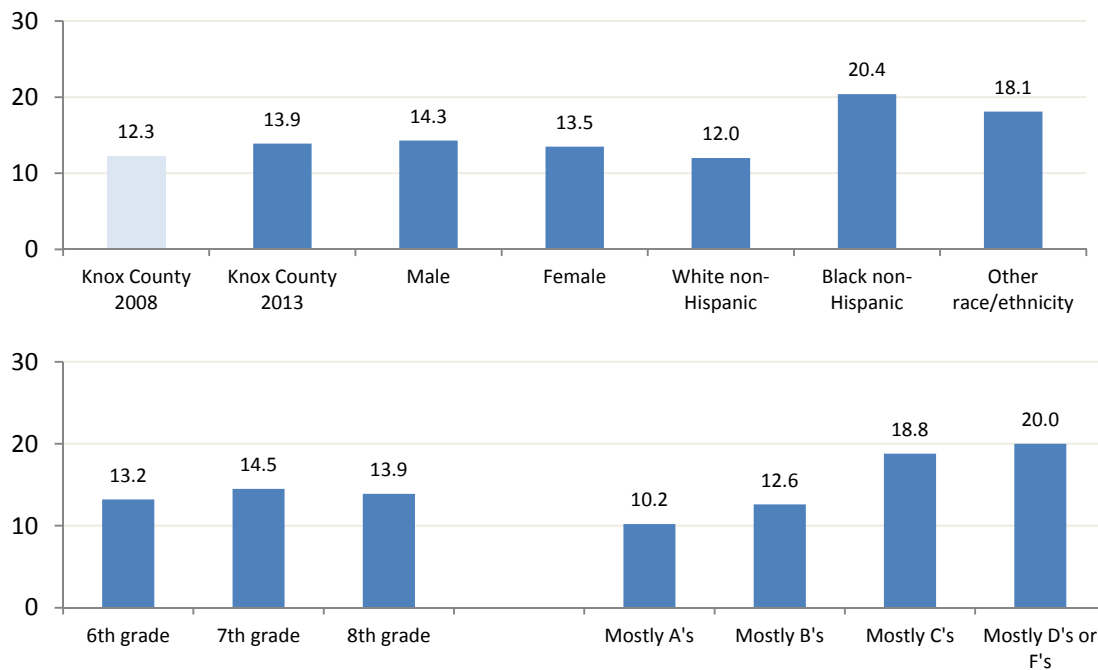
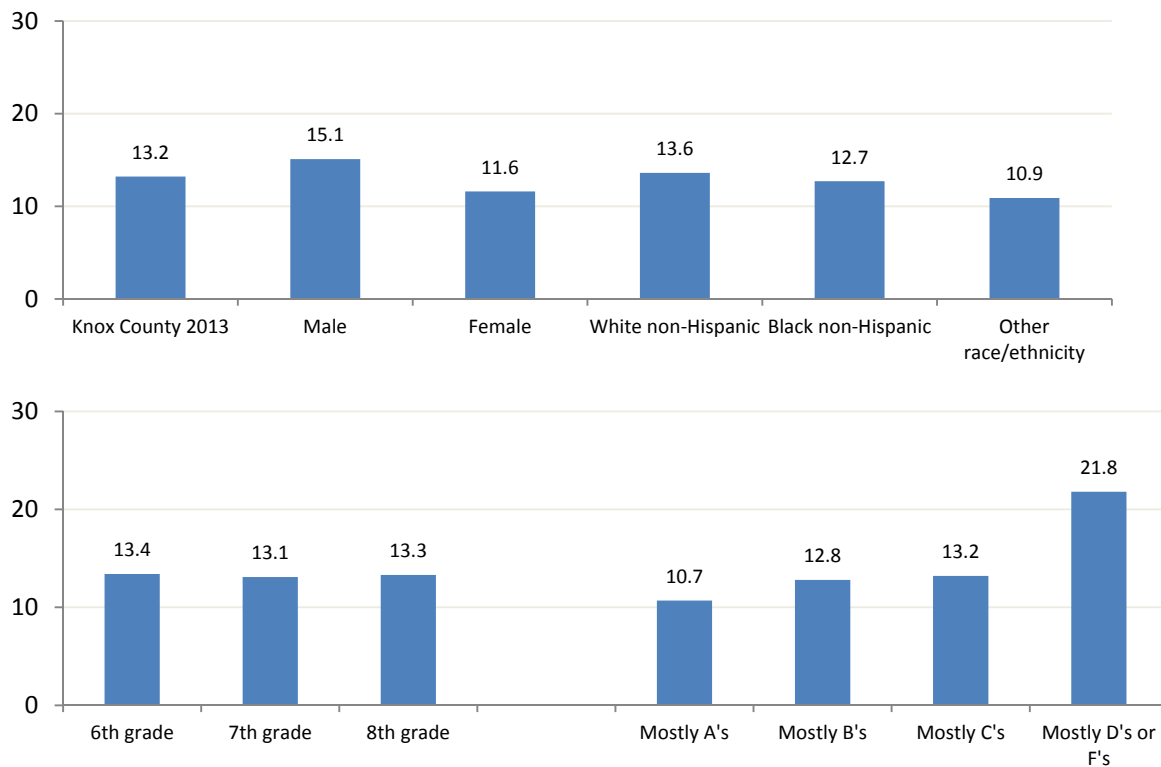


Table 48. Percentage of Knox County Schools middle school students who reported they ‘rarely’ or ‘never’ wash their hands before they eat, 2013

Total n = 1,353

	Sample n	Weighted n	Percentage	CI
Total	180	1,684	13.2	(11.5-15.2)
Male	98	880	15.1	(12.5-18.2)
Female	82	804	11.6	(9.4-14.4)
Race/Ethnicity				
White non-Hispanic	131	1,306	13.6	(11.5-15.9)
Black non-Hispanic	25	274	12.7	(8.7-18.4)
Other race/ethnicity	24	104	10.9	(7.4-15.7)
Grade in school				
6th grade	58	574	13.4	(10.3-17.2)
7th grade	52	557	13.1	(10.0-16.8)
8th grade	70	553	13.3	(10.6-16.5)
Estimated grades in past year				
Mostly A's	45	410	10.7	(8.0-14.2)
Mostly B's	55	532	12.8	(9.9-16.5)
Mostly C's	35	310	13.2	(9.4-18.2)
Mostly D's or F's	24	237	21.8	(15.0-30.6)

Figure 48. Percentage of Knox County Schools middle school students who reported they ‘rarely’ or ‘never’ wash their hands before they eat by gender, race/ethnicity, grade, and estimated school grades in the past year, 2013



Knox County Schools Middle School Youth Risk Behavior Survey, 2013

Table 49. Percentage of Knox County Schools middle school students who reported they sleep eight or more hours on average school nights, 2013

Total n = 1,380

	Sample n	Weighted n	Percentage	CI
Total	759	7,208	57.3	(54.5-60.1)
Male	391	3,449	59.9	(56.0-63.7)
Female	368	3,759	55.1	(51.1-59.0)
Race/Ethnicity				
White non-Hispanic	538	5,540	58.6	(55.4-61.8)
Black non-Hispanic	88	1,089	50.0	(42.6-57.3)
Other race/ethnicity	133	580	61.1	(54.5-67.4)
Grade in school				
6th grade	265	2,835	66.9	(61.9-71.6)
7th grade	245	2,416	57.6	(52.6-62.4)
8th grade	249	1,957	47.2	(42.8-51.6)
Estimated grades in past year				
Mostly A's	261	2,491	65.5	(60.5-70.1)
Mostly B's	254	2,461	60.0	(55.1-64.7)
Mostly C's	123	1,158	49.9	(43.4-56.4)
Mostly D's or F's	49	421	40.1	(31.3-49.7)

Figure 49. Percentage of Knox County Schools middle school students who reported they sleep eight or more hours on average school nights by gender, race/ethnicity, grade, and estimated school grades in the past year, 2013

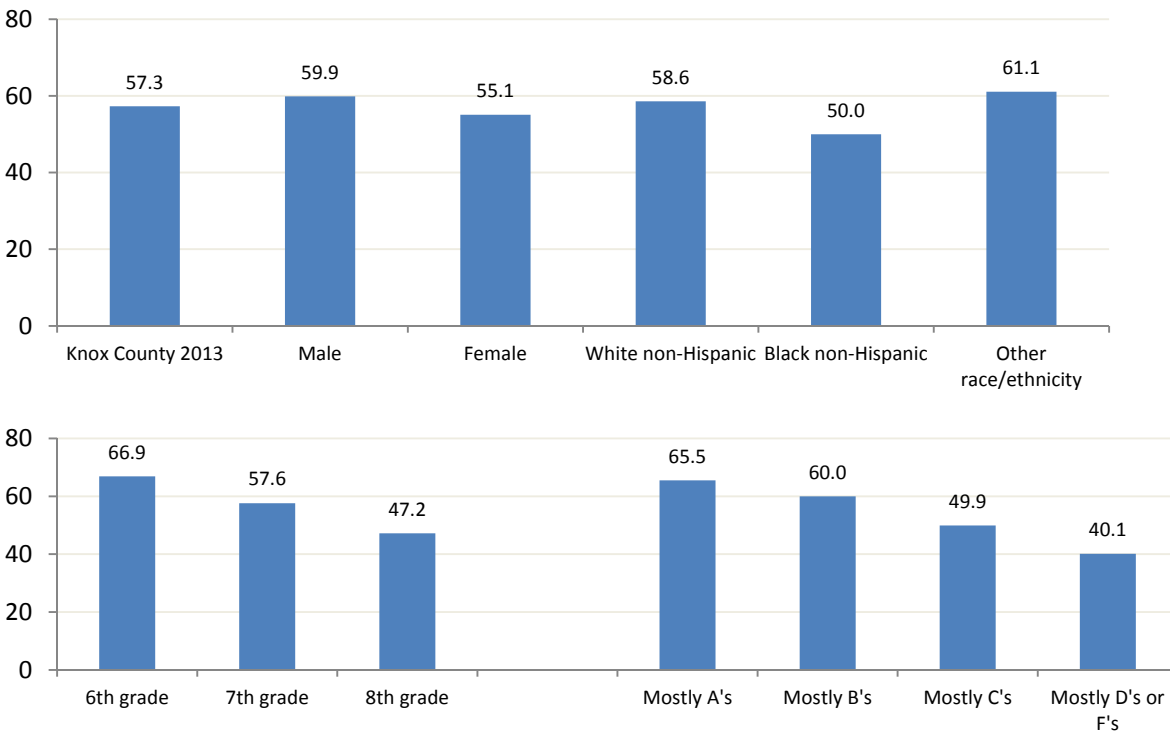
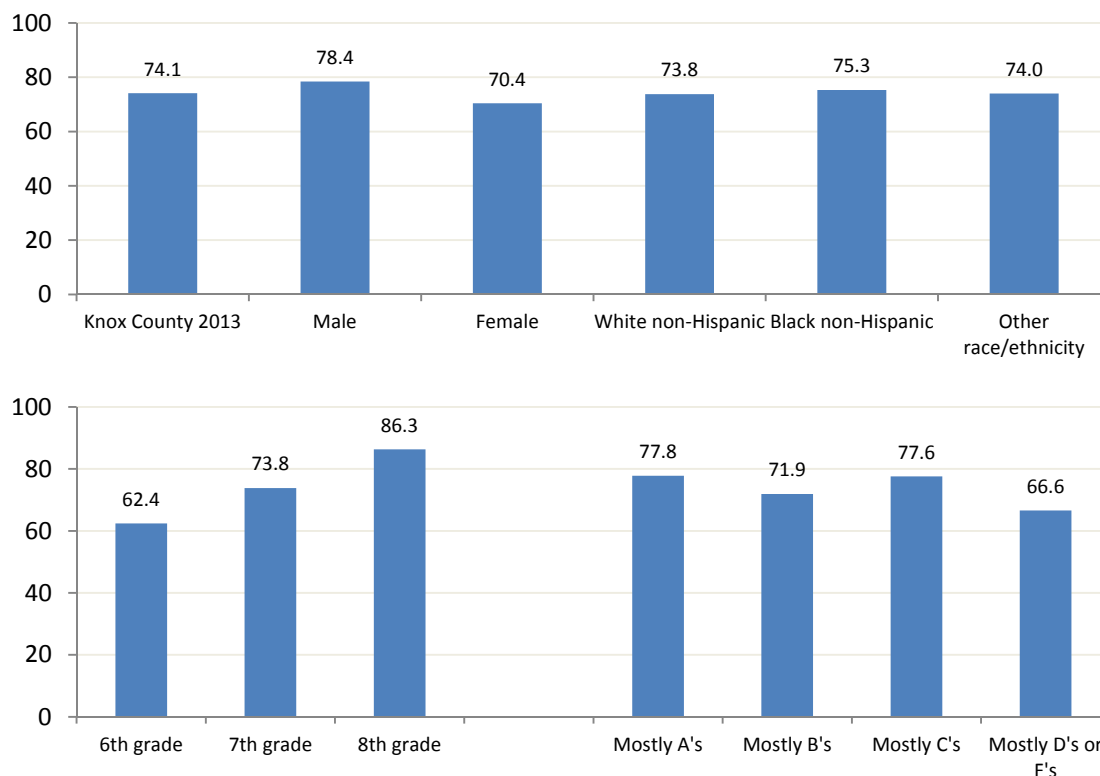


Table 50. Percentage of Knox County Schools middle school students who reported they had ever been taught about sexually transmitted diseases (STDs) in school, 2013

Total n = 1,337

	Sample n	Weighted n	Percentage	CI
Total	1,008	9,292	74.1	(71.6-76.4)
Male	514	4,490	78.4	(75.0-81.4)
Female	494	4,802	70.4	(66.7-73.9)
Race/Ethnicity				
White non-Hispanic	708	6,981	73.8	(70.9-76.5)
Black non-Hispanic	136	1,599	75.3	(68.3-81.3)
Other race/ethnicity	164	712	74.0	(67.7-79.4)
Grade in school				
6th grade	252	2,633	62.4	(57.3-67.2)
7th grade	308	3,099	73.8	(69.4-77.7)
8th grade	448	3,560	86.3	(83.0-89.0)
Estimated grades in past year				
Mostly A's	322	2,956	77.8	(73.2-81.8)
Mostly B's	309	2,933	71.9	(67.3-76.1)
Mostly C's	198	1,800	77.6	(71.8-82.5)
Mostly D's or F's	81	713	66.6	(57.1-74.9)

Figure 50. Percentage of Knox County Schools middle school students who reported they had ever been taught about sexually transmitted diseases (STDs) in school by gender, race/ethnicity, grade, and estimated school grades in the past year, 2013



Knox County Schools Middle School Youth Risk Behavior Survey, 2013

Table 51. Percentage of Knox County Schools middle school students who reported they had ever been taught about AIDS or HIV infection in school, 2013

Total $n = 1,350$

	Sample n	Weighted n	Percentage	CI
Total	988	9,054	71.3	(68.8-73.8)
Male	504	4,392	76.1	(72.6-79.2)
Female	484	4,662	67.4	(63.6-71.0)
Race/Ethnicity				
White non-Hispanic	687	6,757	70.4	(67.4-73.2)
Black non-Hispanic	135	1,575	73.7	(66.5-79.8)
Other race/ethnicity	166	722	75.3	(69.2-80.6)
Grade in school				
6th grade	239	2,462	57.5	(52.4-62.5)
7th grade	309	3,096	72.8	(68.3-76.8)
8th grade	440	3,496	84.1	(80.7-87.0)
Estimated grades in past year				
Mostly A's	317	2,899	75.3	(70.6-79.5)
Mostly B's	313	2,935	71.3	(66.6-75.5)
Mostly C's	186	1,676	71.5	(65.3-77.0)
Mostly D's or F's	81	704	64.6	(55.1-73.0)

Figure 51. Percentage of Knox County Schools middle school students who reported they had ever been taught about AIDS or HIV infection in school, 2008, 2010, 2013; by gender, race/ethnicity, grade, and estimated school grades in the past year, 2013

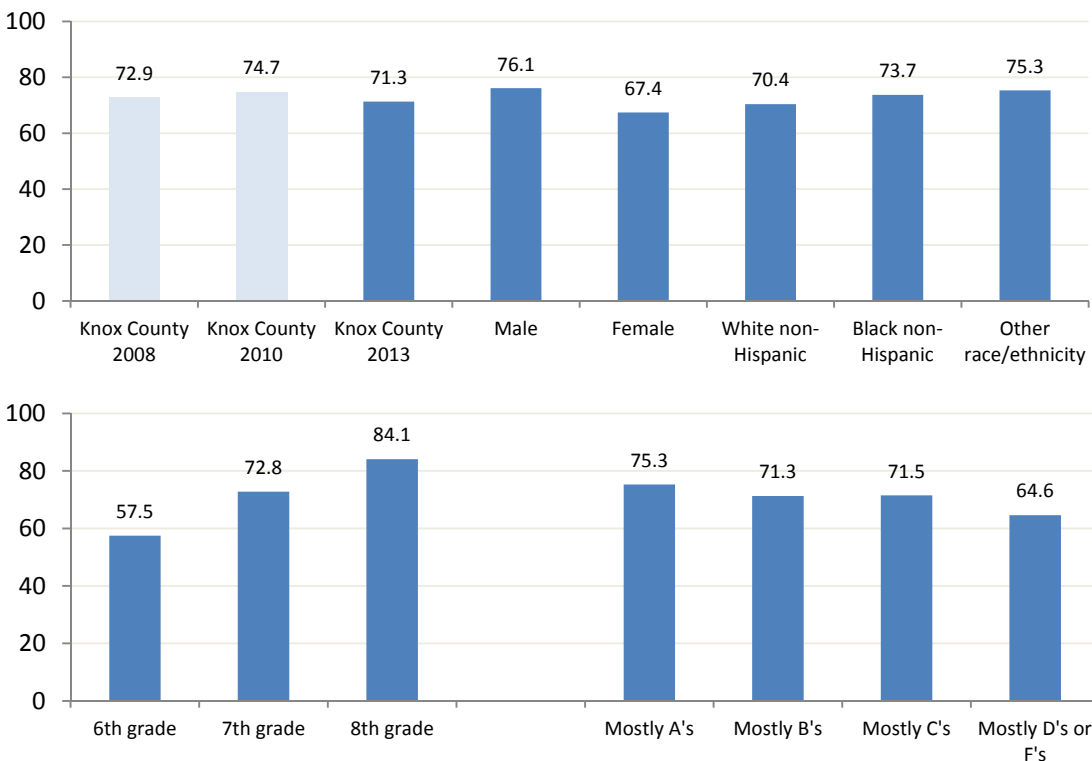
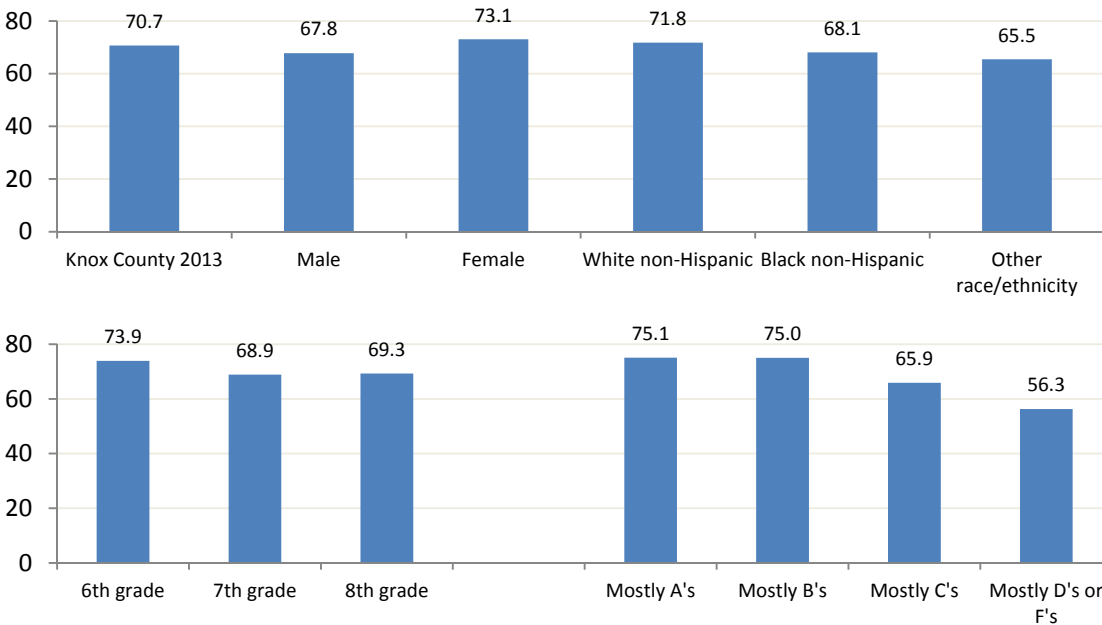


Table 52. Percentage of Knox County Schools middle school students who reported they know a teacher or adult in the school they can talk to, if they have a problem, 2013

Total n = 1,350

	Sample n	Weighted n	Percentage	CI
Total	937	8,925	70.7	(68.1-73.2)
Male	437	3,880	67.8	(64.0-71.4)
Female	500	5,045	73.1	(69.5-76.5)
Race/Ethnicity				
White non-Hispanic	675	6,856	71.8	(68.8-74.6)
Black non-Hispanic	121	1,449	68.1	(60.9-74.6)
Other race/ethnicity	141	620	65.5	(58.9-71.6)
Grade in school				
6th grade	293	3,166	73.9	(69.2-78.2)
7th grade	284	2,888	68.9	(64.1-73.3)
8th grade	360	2,871	69.3	(65.1-73.1)
Estimated grades in past year				
Mostly A's	301	2,882	75.1	(70.5-79.2)
Mostly B's	317	3,080	75.0	(70.6-79.0)
Mostly C's	166	1,539	65.9	(59.6-71.7)
Mostly D's or F's	67	597	56.3	(46.8-65.5)

Figure 52. Percentage of Knox County Schools middle school students who reported they know a teacher or adult in the school they can talk to, if they have a problem, by gender, race/ethnicity, grade, and estimated school grades in the past year, 2013



Knox County Schools Middle School Youth Risk Behavior Survey, 2013

Table 53. Percentage of Knox County Schools middle school students who reported they talked to a guidance counselor in their school about a personal problem during the past 12 months, 2013

Total $n = 1,329$

	Sample n	Weighted n	Percentage	CI
Total	257	2,443	19.5	(17.4-21.8)
Male	89	766	13.4	(10.9-16.3)
Female	168	1,677	24.6	(21.4-28.2)
Race/Ethnicity				
White non-Hispanic	169	1,719	18.1	(15.7-20.7)
Black non-Hispanic	40	512	24.6	(18.5-31.8)
Other race/ethnicity	48	212	22.8	(17.6-29.0)
Grade in school				
6th grade	77	802	19.0	(15.3-23.4)
7th grade	80	872	20.8	(17.0-25.2)
8th grade	100	769	18.7	(15.6-22.4)
Estimated grades in past year				
Mostly A's	48	474	12.5	(9.4-16.3)
Mostly B's	75	716	17.7	(14.2-21.8)
Mostly C's	57	524	22.7	(17.7-28.7)
Mostly D's or F's	37	348	32.6	(24.3-42.1)

Figure 53. Percentage of Knox County Schools middle school students who reported they talked to a guidance counselor in their school about a personal problem during the past 12 months by gender, race/ethnicity, grade, and estimated school grades in the past year, 2013

